



Danner
- EST. 1932 -

FALL '23 WORKBOOK



PEOPLE DON'T COME TO THE PACIFIC NORTHWEST TO BE THE SAME AS EVERYONE ELSE. IT'S JUST NEVER BEEN THAT KIND OF PLACE.

WE THINK A LITTLE DIFFERENTLY. WE TEND TO PUT EXPERIENCES AND KNOWLEDGE, BOTH ABOUT THE WORLD AND OURSELVES, ABOVE POSSESSIONS AND THINGS.

TO SOME IT MIGHT LOOK LIKE COMING HERE IS RUNNING AWAY FROM SOMETHING. AND SURE, THERE IS AN ELEMENT OF ESCAPISM TO PICKING UP, COMING WEST AND PIONEERING ONE'S OWN TRAIL.

BUT THE WAY WE SEE IT, IT'S MORE ABOUT WHAT YOU'RE GOING TO DO. WHAT YOU'RE REALLY AFTER. WHAT YOU CRAVE DEEP DOWN IN YOUR SOUL SO MUCH AND SO BAD THAT YOU'RE WILLING TO DO ANYTHING AND EVERYTHING TO GET IT.

**THESE RIGORS AND REWARDS THE PACIFIC NORTHWEST OFFER
ARE INGRAINED IN OUR VALUES.**

**IT MIGHT BE A PLACE YOU NEED TO VISIT AND REVISIT TO BE YOUR
BEST SELF. A WAY OF LIFE YOU YEARN FOR THAT IS VASTLY DIFFERENT
FROM THE ONE YOU'VE ALWAYS KNOWN.**

**IT'S A COMMITMENT TO SOMETHING YOU FEEL UNEQUIVOCALLY
CALLED TO, OR SIMPLY THE NEED TO STAND UP FOR YOUR BELIEFS
AND WHAT'S RIGHT.**

**TO THOSE OF YOU WHO NOD YOUR HEAD, UNDERSTANDING OF WHAT
WE SPEAK, KNOW THIS:**

WE MAKE OUR BOOTS FOR YOU.

**GO
THERE**

A black and white photograph of a person wearing a hat and light-colored clothing, sitting on a large rock in the middle of a river. The person is looking towards the left. The water is turbulent, with white foam from rapids visible in the foreground and background. The background shows a wide, calm river stretching to the horizon under a dark sky.

PORTLAND MADE

CHARLES DANNER MOVED HIS OPERATIONS TO PORTLAND, OREGON IN 1936 WHEN HE LEARNED LOGGERS WERE IN NEED OF HIGH-QUALITY, HANDCRAFTED BOOTS THAT COULD STAND UP TO THE RIGORS OF THE PACIFIC NORTHWEST.

In fact, a well-worn pair of Danners served as proof a logger was worth his salt. As the needs of the Northwest evolved, so has our line of products. We've made boots for the shipyard workers building boats for the war effort during the '40s and outfitted hikers, backpackers and mountain climbers as the age of recreation bloomed in the '60s and '70s.

Eventually word of our boots got out, so much so the U.S. Army asked us to design a utilitarian combat boot specifically for troops serving in mountainous regions overseas.

And yet, as we've grown, we've done so on our own terms. We still make each pair with handcrafted precision, using the best possible materials we can find, to create boots built to last.

Which is exactly how we're going to keep making them for as long as we make boots.



TIMELINE

The Beginning

1932

Move to the Pacific Northwest

1936-1950

Birth of USA-Made Hiking Boots 1960-76

First Waterproof Boot with GORE-TEX Liner

1979

Change of Ownership

1983



1932 // Charles Danner opens the doors of Danner Shoe Mfg. Company in the old logging town of Chippewa Falls, Wis. with five employees to build affordable, handcrafted work boots.



1936 // Charles discovers an opportunity to sell calked logging boots in the Pacific Northwest and decides to move his family and the Danner business to **Portland, Oregon**.

1939 // Charles's sons John and Bill join the family business. They both leave their studies at the University of Portland to serve in the military during World War II.

1940's // After the end of the war, John goes to law school and Bill focuses on making boots at Danner.

1950's // Bill expands the product line and opens the company's first retail store.



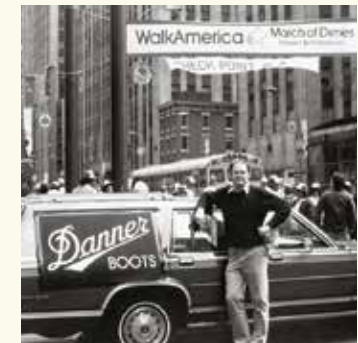
1960 // Hiking, backpacking and mountain climbing become national trends. Danner becomes one of the only domestic manufacturer of hiking boots.

1970 // Danner designs a medium-weight hiker for broader appeal and becomes the standard for performance, rugged durability and craftsmanship.

1973 // The Danner 6490 launches and delivers the perfect balance of minimal break in with heel and toe protection. This model would later become known as the **Mountain Light** and would launch an entire collection of classic hiking designs.



1979 // Danner's unrelenting commitment to quality leads to the development of construction methods to make wet feet a thing of the past. Using **GORE-TEX** fabric, Danner is the first footwear brand to develop and patent a unique way of making a truly waterproof boot.



1983 // After 50 years, Bill sells his company to Eric Merk under the condition that Eric follow the tradition of quality and craftsmanship the Danner family had built over the years. The company then moves to a new larger facility near the Portland airport.

Specialty Boots for
Military and Law
Enforcement **1983-92**



1983 // Danner expands into hunting footwear and building boots for uniformed personnel, including elite members of the **U.S. Armed Forces and law enforcement.**

1992 // The American Podiatric Medical Association awards Danner boots and Danner Airthotic with the **AMPA seal of acceptance**—yet another nod to the comfort of Danner footwear.

Merge with
LaCrosse Footwear **1994**



1994 // On March 14, Danner merges with LaCrosse Footwear Inc. of LaCrosse, Wis., to form a major force in the footwear industry. Since 1897, the LaCrosse brand has stood for premium-quality, handcrafted rubber footwear.

ISO 9002
Certification **1996**



1996 // Danner becomes the first shoe manufacturer in the U.S. to earn ISO 9002 certification. This international set of quality standards helps assure customers that their Danner boots will be made to the highest standards for comfort, durability, support and waterproof protection.

Supporting our
Troops **2010**



2010 // Danner creates premium protective footwear, **co-developing and producing the new standard in combat boots** with the USMC RAT and Army Combat Hiker.

Growth and
Expansion **2010-TODAY**



2010 // The growth of Danner continues with the opening of a world-class 59,000 sq ft factory in Portland, Ore.

2012 // Danner is recognized as being one of the most desirable American fashion brands in the Japanese market.

2014 // The Danner Mountain Light Cascade makes its film debut in the **Fox Searchlight Pictures release of WILD**. Based on Cheryl Strayed's New York Times best-selling book, the film recounts her 1100-mile journey along the Pacific Crest Trail.

NOW // Danner continues to design and manufacture a complete line of hiking, hunting, uniform, work and lifestyle boots in its world-class factory in Portland, Ore.

BUILT TO LAST

IT TAKES YEARS TO LEARN HOW TO MAKE GOOD BOOTS. IT TAKES DECADES TO LEARN HOW TO MAKE GREAT ONES.

We have come by our boot making honestly.

Our techniques have been pioneered and perfected over the past 90 years.

We consider the boots we make to be our boots until they pass to you and become yours.

When they do, know they have been individually made with superior craftsmanship and are built to last.

If you take care of your boots, as you would anything you value, they will last as long as you wish to wear them.



THE STANDARDS

OUR BADGE

We are craftsmen. We pay attention to details. We forgo quantity for quality, knowing that the product we build is only as good as the hands that create it.

GRADING LEATHER

The only way to ensure the quality of a Danner boot is to ensure the quality of the materials we use. That's why every hide of leather is graded through a series of six tests, which check for flexibility and durability.

LEATHER CUTTING

Every hide is unique, as is our tradition of both cutting by hand and using the latest in laser technology. It's the only way to guarantee the best part of each hide is used.

DESIGN CONSTRUCTION

Product design is a vast collection of intricate details, from the last the boot is built on, to the stitching that binds each pattern piece together. And to a Danner boot, these are the details that set it apart.

HANDCRAFTING

There are more efficient ways to manufacture a boot but there is only one way to craft a boot with the fit, comfort and durability of a Danner boot – and that's by hand.


BUILT TO LAST

A pair of Danner boots can go a long way. And since many Danner boots can be recrafted by replacing the outsoles, reworking leather, and restitching seams, a pair of Danner boots can last even longer.



GORE-TEX LINERS

In 1979, Danner® became the first boot maker to use GORE-TEX liners. We consider this setting standards, not simply meeting them.



VIBRAM® OUTSOLES

The mark of a true craftsman comes from developing product that withstands the test of time year after year – and Vibram® exemplifies this. And that's why Danner® is proud to develop outsole designs with Vibram®.

RE-CRAFTING

When you invest in a pair of stitchdown Danner boots, you're getting the most durable, long-lasting footwear available. And for when they finally do begin to wear, Danner is proud to offer recrafting services to extend the life of your boots.

From simple part replacement to restitching seams to major overhauls, Danner can provide repair services so your boots can last even longer. Turnaround time varies, depending on the season and scope of work needed.

Unfortunately, not all Danner boots can be recrafted. They must have a stitchdown, not cement, construction. If there is a tear or hole in the leather, Danner is unable to recraft that boot.

To be sure your boots qualify, please contact us at recrafting@danner.com or visit danner.com/recrafting.

DANNER FACTORY STORE | 12021 NE Airport Way | Portland, OR 97220 |
503.251.1111 | recrafting@danner.com | danner.com/recrafting



All recrafting is done at Danner's Factory store in Portland, Oregon.

CONSTRUCTION



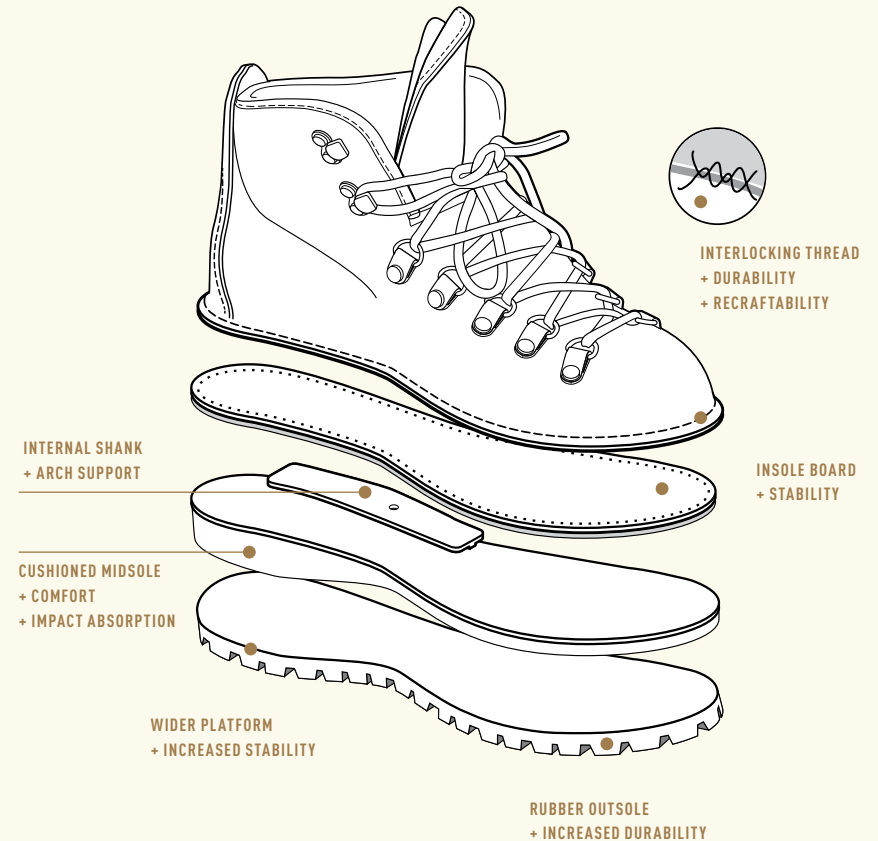
STITCHDOWN CONSTRUCTION
TERRA FORCE NEXT TECHNOLOGY
TERRA FORCE TECHNOLOGY
TRAILGUARD PLATFORM
DANNER COMFORT SYSTEM

A Danner® boot is a mark of unparalleled quality. It's been that way since 1932, the year Charles Danner decided to open his boot making business in the midst of the Great Depression and risk his future on a stubborn belief that—regardless of the economy—superior craftsmanship mattered.

By the 1960s and '70s, Danner stitchdown construction was legendary. It gave our boots a wider, more stable platform.

Over time, we continued to push footwear technology and design—blending heritage and innovation to deliver reliable and durable performance in any environment.

It's much more than just keeping our standards high, it's about making sure the products we create live up to yours.



ORIGINAL STITCHDOWN CONSTRUCTION

Original Stitchdown Construction is Danner's most iconic footwear construction and one of the longest lasting, most durable and stable platforms in the industry.

// STITCHDOWN

LEGENDARY
STITCHDOWN - CEMENT
CONSTRUCTION
+ LIGHTWEIGHT STABILITY

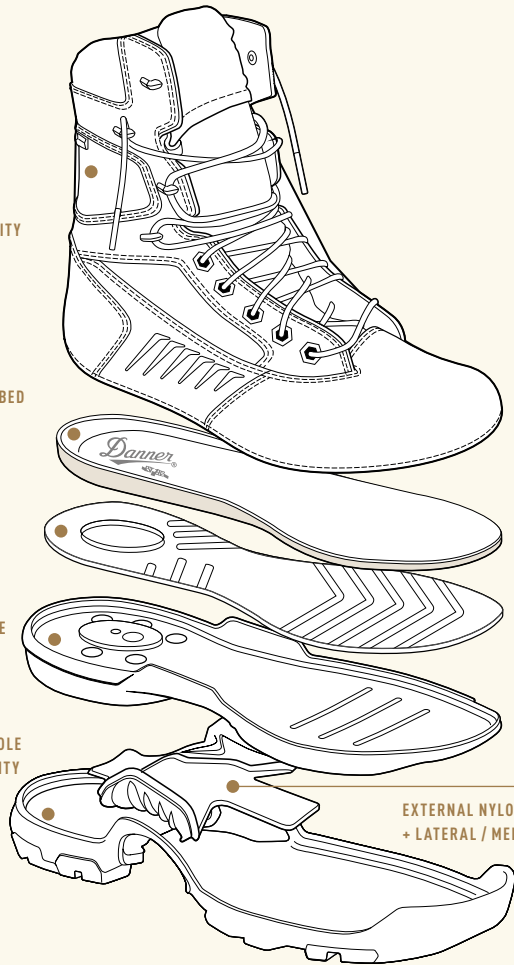
LIGHTWEIGHT PU FOOTBED
+ COMFORT
+ DURABILITY

BI-FIT BOARD
+ STABILITY
+ RESPONSIVENESS

VIBRAM® SPE MIDSOLE
+ ENERGY RETURN
+ CUSHION

MOLDED RUBBER OUTSOLE
+ INCREASED DURABILITY

EXTERNAL NYLON SHANK
+ LATERAL / MEDIAL STABILITY



TERRA FORCE NEXT TECHNOLOGY

TERRA FORCE® Next™ Technology delivers the legendary performance of TERRA FORCE® with added responsiveness, durability and comfort.

// TFN

LEGENDARY
STITCHDOWN - CEMENT
CONSTRUCTION
+ LIGHTWEIGHT STABILITY

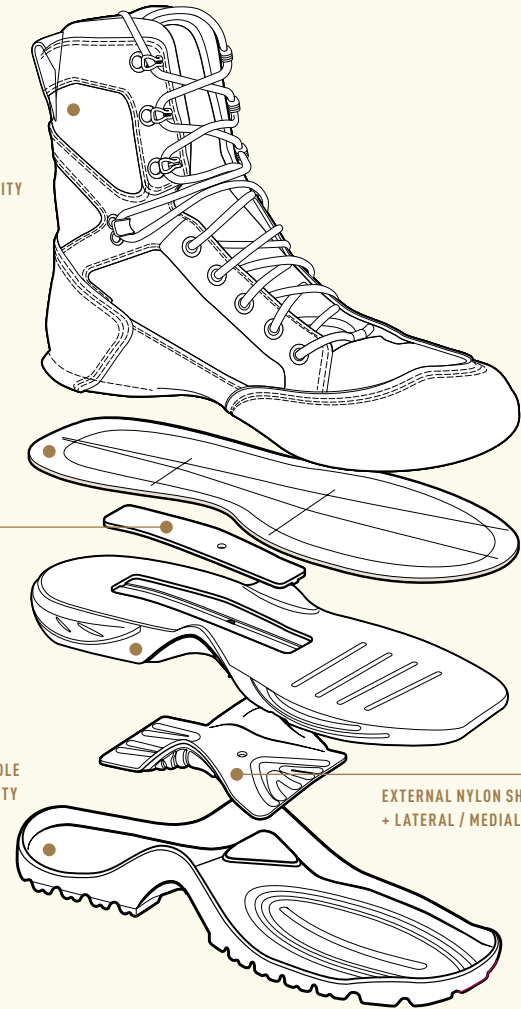
INSOLE BOARD
+ STABILITY

INTERNAL SHANK
+ ARCH SUPPORT

CUSHIONED MIDSOLE
+ COMFORT
+ IMPACT ABSORPTION

MOLDED RUBBER OUTSOLE
+ INCREASED DURABILITY

EXTERNAL NYLON SHANK
+ LATERAL / MEDIAL STABILITY



TERRA FORCE TECHNOLOGY

TERRA FORCE® Technology utilizes a combination of stitchdown and cement constructions, providing a lightweight platform with superior durability and stability.

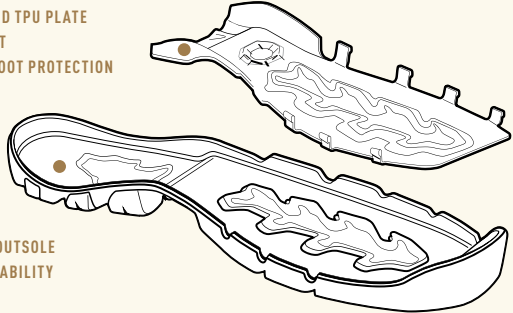
// TF

SEAMLESS CEMENT
CONSTRUCTION
+ LIGHTWEIGHT AGILITY



CUSHIONED MIDSOLE
+ COMFORT
+ IMPACT ABSORPTION

CO-MOLDED TPU PLATE
+ SUPPORT
+ UNDERFOOT PROTECTION



MOLDED RUBBER OUTSOLE
+ INCREASED DURABILITY

TRAILGUARD PLATFORM

The **Trailguard Platform** is one of our lightest-weight cemented constructions, delivering underfoot protection, support and stability on rugged terrain.

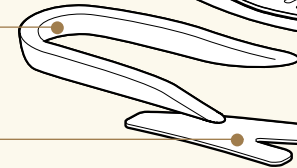
// TRAILGUARD

NESTED CEMENT
CONSTRUCTION
+ DURABILITY
+ COMFORT
+ SUPPORT

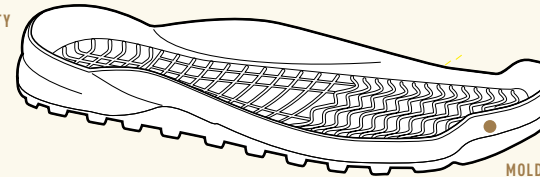


PATENT-PENDING
FOOTBED / HEEL PAD
+ MAXIMUM CUSHIONING

AIRHOTIC® HEEL WRAP
+ ENHANCED STABILITY



BROAD TPU SHANK
+ LATERAL/MEDIAL STABILITY



MOLDED RUBBER OUTSOLE
+ INCREASED DURABILITY

AIR CHANNELS
+ UNDERFOOT VENTING

DANNER COMFORT SYSTEM

The **Danner® Comfort System** is anatomically designed with a broader toe box for a more responsive fit, offering air vents for increased breathability, an Airhotic heel wrap for increased stability and a 15mm thick heel impact zone for increased shock absorption providing a complete package for total foot comfort.

// DCS



MEN'S OUTDOOR

NEW CASCADE CREST



60430



60432



60434

GORE-TEX PRODUCTS

STYLE #	HEIGHT	COLOR / PATTERN	WATERPROOF	INSULATION	WEIGHT
60430	5"	Grizzly Brown/Rhodo Red	✓	-	59 oz
60432	5"	Grizzly Brown/Ursa Blue	✓	-	51 oz
60434	5"	Turkish Coffee/Moss Green	✓	-	59 oz

SIZES AVAILABLE IN WOMEN'S

LAST DPDX

D: 7-15 [½ thru 12]; EE: 7-15 [½ thru 12]

▪ **Made in the USA with imported components**

- Durable full-grain leather and suede or textile upper
- GORE-TEX Leaf waterproof breathable lining uses 30% post-consumer recycled material
- Cushioning open-cell OrthoLite® Eco™ footbed
- Two lace options
- Bi-Fit board for stability
- Handcrafted, stitchdown construction for strength and stability
- Custom Vibram® outsole with Megagrip compound and Traction Lug technology
- Recraftable

NEW TRAIL ROAMER



64200



64202

DANNER® DRY

STYLE #	HEIGHT	COLOR / PATTERN	WATERPROOF	INSULATION	WEIGHT
64200	3"	Bone Brown/Rhodo Red	✓	-	29 oz
64202	3"	Timberwolf/Marmalade	✓	-	29 oz

SIZES AVAILABLE IN WOMEN'S

LAST DT6.4MM

D: 7-14 [½ thru 12]; EE: 7-14 [½ thru 12]

- Durable full-grain leather upper
- Danner® Dry waterproof protection
- Cushioning open-cell OrthoLite® Eco footbed
- Danner® PlyoGo lightweight, shock-absorbing EVA midsole
- 4mm heel-to-toe drop
- Nylon Shank
- TPU heel frame to enhance support and stability
- Vibram® Litebase technology reduces outsole weight while maintaining grip and wear resistance
- Vibram® Trailcomber outsole with Megagrip technology offers superior grip on wet and dry surfaces

TRAIL 2650 CAMPO



68963



68940



68941



68944



68945



68960



68964

GORE-TEX PRODUCTS OrthoLite® // TRAILGUARD PlyoGO Vibram MEGAGRIP

- PU-coated leather and textile upper with TPU overlays provides durability with superior breathability
- Sock-like construction wraps the foot for a comfortable, snug fit
- Waterproof styles feature GORE-TEX Invisible Fit lightweight construction for superior waterproof protection with increased flexibility and comfort
- Non-waterproof styles feature quick-drying, moisture-wicking, breathable mesh lining
- Dust gaiter compatible
- Updated EXO Heel System features lightweight TPU to provide maximum support and comfort with a reinforced external heel counter
- Cushioning open-cell OrthoLite® footbed
- TRAILGUARD platform with exposed TPU shank offers lightweight, athletic performance
- Danner® PlyoGo lightweight, shock-absorbing EVA midsole with drainage ports for quick drying
- 8mm heel-to-toe drop
- Vibram® 460 outsole with Megagrip technology offers superior grip on wet and dry surfaces

STYLE #	HEIGHT	COLOR / PATTERN	WATERPROOF	INSULATION	WEIGHT
68940	3"	Brick/Tan/Blue	-	-	22 oz
68941	3"	Slate/Red	-	-	22 oz
68944	3"	Brown/Green/Orange	-	-	22 oz
68945	3"	Brown/Orion Blue	-	-	22 oz
68960	3"	Black/Red	✓	-	24 oz
68963	3"	Brown/Meadow Green	✓	-	24 oz
68964	3"	Blue/Orange	✓	-	24 oz

SIZES AVAILABLE IN WOMEN'S

LAST DT6

68945, 68963 D: 7-14 [½ thru 12]; EE: 7-14 [½ thru 12]

68940, 68941, 68944, 68960, 68964 D: 7-14 [½ thru 12]; EE: 8-14 [½ thru 12]

TRAIL 2650



61287



61200



61214



61272



61275



61282

GORE-TEX PRODUCTS OrthoLite® // TRAILGUARD PlyoGO Vibram MEGAGRIP

- Lightweight, durable suede and textile upper
- GORE-TEX waterproof breathable lining or mesh lining options
- EXO Heel System provides maximum support and comfort with a reinforced external heel counter
- Cushioning open-cell OrthoLite® footbed
- TRAILGUARD platform with exposed TPU shank offers lightweight, athletic performance
- Danner® PlyoGo lightweight, shock-absorbing EVA midsole
- 8mm heel-to-toe drop
- Vibram® 460 outsole with Megagrip technology offers superior grip on wet and dry surfaces

STYLE #	HEIGHT	COLOR / PATTERN	WATERPROOF	INSULATION	WEIGHT
61200	3"	Dark Gray/Brick Red	✓	-	27 oz
61214	3"	Tan/Meadow Green	✓	-	27 oz
61287	3"	Black Olive/Flax Yellow	✓	-	27 oz
61272	3"	Brown/Red	-	-	24 oz
61275	3"	Black/Gray	-	-	24 oz
61282	3"	Charcoal/Goblin Blue	-	-	24 oz

SIZES AVAILABLE IN WOMEN'S

LAST DT6


D: 7-15 [½ thru 12]; EE: 8-14 [½ thru 12]

TRAIL 2650 MESH



61212

61210

Ortholite® // TRAILGUARD PlyoGO  MEGAGRIP

STYLE #	HEIGHT	COLOR / PATTERN	WATERPROOF	INSULATION	WEIGHT
61210	3"	Black Shadow	-	-	26 oz
61212	3"	Painted Hills	-	-	26 oz

SIZES AVAILABLE IN WOMEN'S

LAST DT6

61210 D: 7-14 [½ thru 12]; EE: 8-13 [½ thru 12]

61212 D: 7-14 [½ thru 12]

- Lightweight mesh and textile upper
- Breathable mesh lining
- EXO Heel System provides maximum support and comfort with a reinforced external heel counter
- Cushioning open-cell OrthoLite® footbed
- TRAILGUARD platform with exposed TPU shank offers lightweight, athletic performance
- Danner® PlyoGo lightweight, shock-absorbing EVA midsole
- 8mm heel-to-toe drop
- Vibram® 460 outsole with Megagrip technology offers superior grip on wet and dry surfaces

TRAIL 2650 FULL GRAIN



61278

GORE-TEX® Ortholite® // TRAILGUARD PlyoGO  MEGAGRIP

STYLE #	HEIGHT	COLOR / PATTERN	WATERPROOF	INSULATION	WEIGHT
61278	3"	Prairie Sand	-	-	24 oz

SIZES

LAST DT6

D: 7-14 [½ thru 12]

- Durable, full-grain leather and nylon upper
- GORE-TEX waterproof breathable lining or mesh lining options
- EXO Heel System provides maximum support and comfort with a reinforced external heel counter
- Cushioning open-cell OrthoLite® footbed
- TRAILGUARD platform with exposed TPU shank offers lightweight, athletic performance
- Danner® PlyoGo lightweight, shock-absorbing EVA midsole
- 8mm heel-to-toe drop
- Vibram® 460 outsole with Megagrip technology offers superior grip on wet and dry surfaces

TRAIL 2650 MID



GORE-TEX[®] PRODUCTS Ortholite[®] // TRAILGUARD PlyoGO Vibram MEGAGRIP

STYLE #	HEIGHT	COLOR / PATTERN	WATERPROOF	INSULATION	WEIGHT
61240	4"	Dusty Olive	✓	-	30 oz
61243	4"	Brown/Military Green	✓	-	30 oz
61248	4"	Black/Khaki	✓	-	30 oz
61249	4"	Brown/Red	✓	-	30 oz

SIZES AVAILABLE IN WOMEN'S

LAST DT6

61240, 61243 D: 7-14 [½ thru 12]; EE: 7-14 [½ thru 12]

61248, 61249 D: 7-14 [½ thru 12]; EE: 8-14 [½ thru 12]

- Durable suede or full-grain leather and nylon upper
- GORE-TEX waterproof breathable lining
- EXO Heel System provides maximum support and comfort with a reinforced external heel counter
- Cushioning open-cell OrthoLite[®] footbed
- TRAILGUARD platform with exposed TPU shank offers lightweight, athletic performance
- Danner[®] PlyoGo lightweight, shock-absorbing EVA midsole
- 8mm heel-to-toe drop
- Vibram[®] 460 outsole with Megagrip technology offers superior grip on wet and dry surfaces

PANORAMA LOW



DANNER[®] DRY Ortholite[®] PLYOLITE

STYLE #	HEIGHT	COLOR / PATTERN	WATERPROOF	INSULATION	WEIGHT
63470	4"	Brown/Red	✓	-	34 oz
63471	4"	Black Olive	✓	-	34 oz

SIZES

LAST DPDX

D: 7-12, 13, 14, 15; EE: 7-12, 13, 14, 15

- Durable suede upper
- PU-coated leather rand on heel and forefoot for added durability and abrasion-resistance
- Danner[®] Dry waterproof protection
- Cushioning open-cell OrthoLite[®] footbed
- Danner[®] Plyolite[®] EVA midsole offers lasting support and rebound
- Wrap-around outsole provides increased protection at base of foot
- Danner[®] Panorama outsole features large, deep lugs for stability and traction in rugged terrain

PANORAMA MID



63433

63435

DANNER® DRY OrthoLite® PLYOLITE

STYLE #	HEIGHT	COLOR / PATTERN	WATERPROOF	INSULATION	WEIGHT
63433	6"	Brown/Red	✓	-	37 oz
63435	6"	Black Olive	✓	-	37 oz

SIZES AVAILABLE IN WOMEN'S

LAST DPDX

D: 7-12, 13, 14, 15; EE: 7-12, 13, 14, 15

- Durable suede upper
- PU-coated leather rand on heel and forefoot for added durability and abrasion-resistance
- Danner® Dry waterproof protection
- Cushioning open-cell OrthoLite® footbed
- Danner® Plyolite® EVA midsole offers lasting support and rebound
- Wrap-around outsole provides increased protection at base of foot
- Danner® Panorama outsole features large, deep lugs for stability and traction in rugged terrain



SOUTH RIM 600



64310

Ortholite®   MEGAGRIP

STYLE #	HEIGHT	COLOR / PATTERN	WATERPROOF	INSULATION	WEIGHT
64310	4"	Sand	-	-	32 oz

SIZES

LAST DPDX

D: 8-14 [½ thru 12]; EE: 8-13 [½ thru 12]

- Suede and textile upper
- Cushioning open-cell OrthoLite® footbed
- Vibram® SPE midsole for maximum rebound, comfort and support
- Nylon shank
- TPU heel frame to enhance support and stability
- Vibram® Fuga outsole with Megagrip technology offers superior grip on wet and dry surfaces

TRAILCOMBER



63351

Ortholite® *PlyoGO*   MEGAGRIP **CORDURA®**

STYLE #	HEIGHT	COLOR / PATTERN	WATERPROOF	INSULATION	WEIGHT
63351	3"	Lichen/Picante	-	-	19 oz

SIZES

LAST DT6.4MM

D: 7-14 [½ thru 12]; EE: 7-14 [½ thru 12]

- Breathable, abrasion-resistant Cordura® knit upper
- EXO Lite Heel System provides a comfortable, secure fit
- Cushioning open-cell Ortholite® footbed
- Danner® PlyoGo lightweight, shock-absorbing EVA midsole
- Quick-drying construction with drainable midsole for wet environments
- 4mm heel-to-toe drop
- Nylon shank
- Vibram® Litebase technology reduces outsole weight while maintaining grip and wear resistance
- Vibram® Trailcomber outsole with Megagrip technology offers superior grip on wet and dry surfaces

RIVERCOMBER



63300

Ortholite® PlyoGO   WAVEGRIP 

STYLE #	HEIGHT	COLOR / PATTERN	WATERPROOF	INSULATION	WEIGHT
63300	3"	Goblin Blue/Charcoal	-	-	22 oz

SIZES

LAST DT6.4MM

D: 7-14 [½ thru 12]; EE: 7-14 [½ thru 12]

- Breathable, abrasion-resistant Cordura® knit upper
- EXO Lite Heel System provides a comfortable, secure fit
- Cushioning open-cell Ortholite® footbed
- Danner® PlyoGo lightweight, shock-absorbing EVA midsole
- Quick-drying construction with drainable midsole for wet environments
- 4mm heel-to-toe drop
- Nylon shank
- Vibram® Rivercomber outsole with non-marking Wavegrip technology directs water away from the foot for ultimate grip on wet surfaces

LOST COAST SANDAL



68133



68134

  MEGAGRIP

STYLE #	HEIGHT	COLOR / PATTERN	WATERPROOF	INSULATION	WEIGHT
68133	-	Sand Dune	-	-	16 oz
68134	-	Gray/Kombu Green	-	-	16 oz

SIZES

LAST 827

M: 6-14 [whole sizes only]

- Full-grain leather and neoprene upper
- Premium leather footbed
- Lightweight, shock-absorbing Vibram® EVA midsole
- Vibram® Black Sands outsole with Megagrip technology offers superior grip on wet and dry surfaces

MOUNTAIN 600



DANNER® DRY Ortholite®   MEGAGRIP

STYLE #	HEIGHT	COLOR / PATTERN	WATERPROOF	INSULATION	WEIGHT
36233	4.5"	Java/Bossa Nova	✓	-	37 oz
62241	4.5"	Brown/Red	✓	-	37 oz
62285	4.5"	Antique Bronze/Murky Green	✓	-	37 oz
62287	4.5"	Black/Khaki	✓	-	37 oz

SIZES AVAILABLE IN WOMEN'S

LAST DPDX

36233 D: 7-13 [½ thru 12]

62241 D: 7-14 [½ thru 12]; EE: 8-13 [½ thru 12]

62285, 62287 D: 7-14 [½ thru 12]; EE: 7-14 [½ thru 12]

- Waterproof suede upper
- Danner® Dry waterproof protection
- Cushioning open-cell OrthoLite® footbed
- Vibram® SPE midsole for maximum rebound, comfort and support
- Nylon shank
- TPU heel frame to enhance support and stability
- Vibram® Fuga outsole with Megagrip technology offers superior grip on wet and dry surfaces

MOUNTAIN 600 FULL GRAIN



DANNER® DRY Ortholite®   MEGAGRIP

STYLE #	HEIGHT	COLOR / PATTERN	WATERPROOF	INSULATION	WEIGHT
62246	4.5"	Saddle Tan	✓	-	39 oz
62250	4.5"	Rich Brown	✓	-	39 oz
62289	4.5"	Chocolate Chip/Golden Oak	✓	-	39 oz

SIZES AVAILABLE IN WOMEN'S

LAST DPDX

62246 D: 7-13 [½ thru 12]

62250 D: 7-15 [½ thru 12]; EE: 8-14 [½ thru 12]

62289 D: 7-14 [½ thru 12]; EE: 7-14 [½ thru 12]

- Durable full-grain leather upper
- Danner® Dry waterproof protection
- Two lace options [62246]
- Cushioning open-cell OrthoLite® footbed
- Vibram® SPE midsole for maximum rebound, comfort and support
- Nylon shank
- TPU heel frame to enhance support and stability
- Vibram® Fuga outsole with Megagrip technology offers superior grip on wet and dry surfaces

NEW MOUNTAIN 600 INSULATED



62147

PRIMALOFT. DANNER® DRY Ortholite® Vibram® ARCTIC GRIP

STYLE #	HEIGHT	COLOR / PATTERN	WATERPROOF	INSULATION	WEIGHT
62147	4.5"	Pinecone/Brick Red	✓	200G	40 oz

SIZES AVAILABLE IN WOMEN'S

LAST DPDX

D: 7-15 [½ thru 12]; EE: 8-14 [½ thru 12]

- Durable full-grain leather upper with 200G PrimaLoft® Gold insulation
- Danner® Dry waterproof protection
- Cushioning open-cell OrthoLite® footbed
- Vibram® SPE midsole for maximum rebound, comfort and support
- Nylon shank
- TPU heel frame to enhance support and stability
- Vibram® Nisqually Arctic Grip outsole with Arctic Grip AT technology offers superior traction in wet, icy conditions

ARCTIC 600



NEW 67342



67338



67339



NEW 67346

PRIMALOFT. DANNER® DRY Ortholite® Vibram® ARCTIC GRIP

STYLE #	HEIGHT	COLOR / PATTERN	WATERPROOF	INSULATION	WEIGHT
67338	7"	Brown/Red	✓	200G	45 oz
67339	7"	Black/Brown	✓	200G	45 oz
67342	7"	Roasted Pecan/Fired Brick	✓	200G	45 oz
67346	7"	Jet Black/Mojave	✓	200G	45 oz

SIZES AVAILABLE IN WOMEN'S

LAST DPDX

67338 D: 7-14 [½ thru 12]; EE: 7-14 [½ thru 12]

67339 D: 8-14 [½ thru 12]

67342, 67346 D: 8-14 [½ thru 12]; EE: 8-14 [½ thru 12]

- Premium suede or durable full-grain leather upper with 200G PrimaLoft® Gold insulation
- Danner® Dry waterproof protection
- Semi-locking YKK® Side-Zip
- Cushioning open-cell OrthoLite® footbed
- Vibram® SPE midsole for maximum rebound, comfort and support
- Nylon shank
- TPU heel frame to enhance support and stability
- Vibram® Nisqually Arctic Grip outsole with Arctic Grip AT technology offers superior traction in wet, icy conditions

ARCTIC 600 CHELSEA



67372







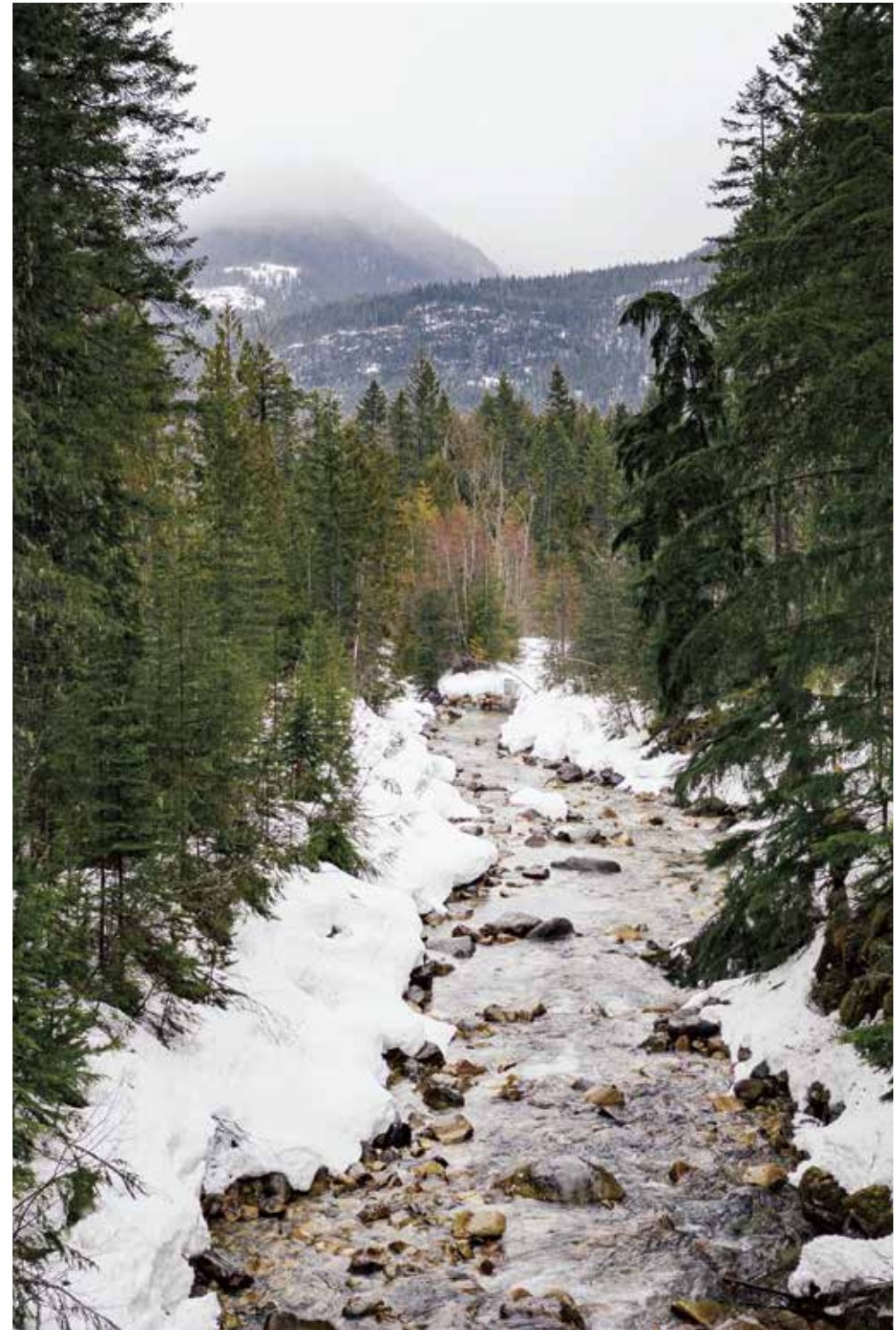
STYLE #	HEIGHT	COLOR / PATTERN	WATERPROOF	INSULATION	WEIGHT
67372	5"	Black	✓	200G	35 oz

SIZES

LAST DPDX

D: 7-14 [1/2 thru 12]

- Premium suede upper with 200G PrimaLoft® Gold insulation
- Danner® Dry waterproof protection
- Cushioning open-cell OrthoLite® footbed
- Vibram® SPE midsole for maximum rebound, comfort and support
- Nylon shank
- TPU heel frame to enhance support and stability
- Vibram® Nisqually Arctic Grip outsole with Arctic Grip technology offers superior traction in wet, icy conditions



VITAL TRAIL



65301

65300

DANNER® DRY PLYOLITE

STYLE #	HEIGHT	COLOR / PATTERN	WATERPROOF	INSULATION	WEIGHT
65300	6"	Coffee Brown	✓	-	42 oz
65301	6"	Brown/Olive	✓	-	42 oz

SIZES

LAST DT4

D: 7-14 [½ thru 12]; EE: 8-14 [½ thru 12]

- Abrasion-resistant leather and textile upper
- Danner® Dry waterproof protection
- Lock and load lacing system: ghillies across the forefoot for secure fit and locking speed hooks for quick, quiet lacing
- Mesh liner layered over Danner® Dry on tongue to help regulate both moisture and temperature
- Multi-density foam patterning eliminates hotspots and pinch points
- Molded, open-cell PU footbed
- Danner® Plyolite® EVA midsole offers lasting support and rebound
- Nylon shank
- TPU heel frame to enhance support and stability
- Danner® Vital outsole provides grip on moss, rock and slick surfaces

CRAG RAT USA®



67810

GORE-TEX® Ortholite® Vibram® DRS



STYLE #	HEIGHT	COLOR / PATTERN	WATERPROOF	INSULATION	WEIGHT
67810	7"	Brown/Green	✓	-	59 oz

SIZES

LAST 851

D: 7-15 [½ thru 12]; EE: 8-15 [½ thru 12]

- **Made in the USA with imported components**
- Durable, waterproof nubuck leather upper
- 360° abrasion-resistant Vibram® rubber rand
- GORE-TEX waterproof breathable lining
- Cushioning open-cell OrthoLite® footbed
- D-ring hardware with double hooks for custom lacing
- Danner® DRS platform to help support heavy loads
- Vibram® Tsavo outsole provides superior grip on rugged, high-elevation terrain

MOUNTAIN LIGHT II



30800



30860

GORE-TEX PRODUCTS // STITCHDOWN



STYLE #	HEIGHT	COLOR / PATTERN	WATERPROOF	INSULATION	WEIGHT
30800	5"	Brown	✓	-	62 oz
30860	5"	Black	✓	-	62 oz

SIZES AVAILABLE IN WOMEN'S

LAST 650

D: 7-15 [½ thru 12]; EE: 6-13 [½ thru 12]

- **Made in the USA**
- Durable, one-piece full-grain leather upper
- GORE-TEX waterproof breathable lining
- Danner® Airthotic® heel cradle and arch support
- Fiberglass shank
- Handcrafted, stitchdown construction for strength and stability
- Vibram® 148 Kletterlift outsole offers superior traction, stability and shock absorption on rugged terrain
- Recraftable

EXPLORER



45200

GORE-TEX PRODUCTS // STITCHDOWN



STYLE #	HEIGHT	COLOR / PATTERN	WATERPROOF	INSULATION	WEIGHT
45200	6"	Brown	✓	-	63 oz

SIZES AVAILABLE IN WOMEN'S

LAST 650

D: 7-14 [½ thru 12]; EE: 6-13 [½ thru 12]

- **Made in the USA**
- Durable, full-grain leather upper
- GORE-TEX waterproof breathable lining
- Danner® Airthotic® heel cradle and arch support
- Fiberglass shank
- Handcrafted, stitchdown construction for strength and stability
- Vibram® 148 Kletterlift outsole offers superior traction, stability and shock absorption on rugged terrain
- Recraftable

DANNER® LIGHT II



33000

33020

GORE-TEX® PRODUCTS // STITCHDOWN



STYLE #	HEIGHT	COLOR / PATTERN	WATERPROOF	INSULATION	WEIGHT
33000	6"	Brown	✓	-	61 oz
33020	6"	Dark Brown	✓	-	61 oz

SIZES AVAILABLE IN WOMEN'S

LAST 650

D: 7-14 [½ thru 12]; EE: 8-13 [½ thru 12]

- **Made in the USA**
- Durable full-grain or nubuck leather upper with 1000 denier nylon
- GORE-TEX waterproof breathable lining
- Danner® Airthotic® heel cradle and arch support
- Fiberglass shank
- Handcrafted, stitchdown construction for strength and stability
- Vibram® 148 Kletterlift outsole offers superior traction, stability and shock absorption on rugged terrain
- Recraftable

CRATER RIM



37440

GORE-TEX® PRODUCTS



STYLE #	HEIGHT	COLOR / PATTERN	WATERPROOF	INSULATION	WEIGHT
37440	6"	Brown	✓	-	58 oz

SIZES AVAILABLE IN WOMEN'S

LAST 610

R: 7-15 [½ thru 12]; W: 8-13 [½ thru 12]

- **Made in the USA**
- Durable, waterproof nubuck leather upper
- 360° abrasion-resistant Vibram® rubber rand
- GORE-TEX waterproof breathable lining
- D-ring hardware and lace-to-toe design for secure fit
- Cushioning PU footbed
- Fiberglass shank
- Vibram® Bifida outsole offers superior traction on rugged terrain

453



NEW 45365

45364

GORE-TEX PRODUCTS // TFX

STYLE #	HEIGHT	COLOR / PATTERN	WATERPROOF	INSULATION	WEIGHT
45364	5.5"	Dark Tan	✓	-	48 oz
45365	5.5"	Turkish Coffee/Timberwolf	✓	-	48 oz

SIZES

LAST 850

D: 7-15 [½ thru 12]; EE: 8-13 [½ thru 12]

- Durable full-grain or nubuck leather upper with abrasion-resistant toe cap
- GORE-TEX waterproof breathable lining
- Speed lacing system for secure, enhanced fit
- Cushioning Danner® Fatigue Fighter footbed
- Lightweight, shock-absorbing EVA midsole
- Thermoplastic PU shank
- TERRA FORCE® X platform offers lightweight performance and stability
- Danner® Approach TFX® outsole offers instant acceleration over rugged terrain

RADICAL 452



45254

GORE-TEX PRODUCTS // TF

STYLE #	HEIGHT	COLOR / PATTERN	WATERPROOF	INSULATION	WEIGHT
45254	5.5"	Dark Brown	✓	-	46 oz

SIZES

LAST 850

D: 7-14 [½ thru 12]; EE: 8-13 [½ thru 12]

- Durable nubuck leather upper with rugged 1000 denier nylon
- Abrasion-resistant toe cap
- GORE-TEX waterproof breathable lining
- Lightweight, shock-absorbing EVA midsole
- Thermoplastic PU shank
- TERRA FORCE® platform offers lightweight performance and stability
- Danner® Boulder TF outsole with multi-directional lugs offers stability on rugged terrain



WOMEN'S OUTDOOR



NEW CASCAD CREST



STYLE #	HEIGHT	COLOR / PATTERN	WATERPROOF	INSULATION	WEIGHT
60431	5"	Grizzly Brown/Rhodo Red	✓	-	46 oz
60433	5"	Grizzly Brown/Ursa Blue	✓	-	45 oz

SIZES **LAST** DPDX

M: 5-11 [1/2 thru 11]

- **Made in the USA with imported components**
- Durable full-grain leather and suede or textile upper
- GORE-TEX Leaf waterproof breathable lining uses 30% post-consumer recycled material
- Cushioning open-cell OrthoLite® Eco™ footbed
- PU midsole for lasting cushion
- Handcrafted, stitchdown construction for strength and stability
- Custom Vibram® outsole with Megagrip compound and Traction Lug technology
- Recraftable

NEW TRAIL ROAMER



STYLE #	HEIGHT	COLOR / PATTERN	WATERPROOF	INSULATION	WEIGHT
64201	3"	Bone Brown/Rhodo Red	✓	-	22 oz
64203	3"	Timberwolf/Marmalade	✓	-	22 oz

SIZES **LAST** DT6.4MM

M: 5-11 [1/2 thru 11]

- Durable full-grain leather upper
- Danner® Dry waterproof protection
- Cushioning open-cell OrthoLite® Eco footbed
- Danner® PlyoGo lightweight, shock-absorbing EVA midsole
- 4mm heel-to-toe drop
- Nylon Shank
- TPU heel frame to enhance support and stability
- Vibram® Litebase technology reduces outsole weight while maintaining grip and wear resistance
- Vibram® Trailcomber outsole with Megagrip technology offers superior grip on wet and dry surfaces

TRAIL 2650 CAMPO



GORE-TEX[®] OrthoLite[®] // TRAILGUARD PlyoGO Vibram MEGAGRIP

STYLE #	HEIGHT	COLOR / PATTERN	WATERPROOF	INSULATION	WEIGHT
68942	3"	Taupe	-	-	18 oz
68943	3"	Yam	-	-	18 oz
68946	3"	Birch/Grape	-	-	18 oz
68966	3"	Blue/Orange	✓	-	19 oz

SIZES

LAST DT6

M: 5-11 [½ thru 11]

- PU-coated leather and textile upper with TPU overlays provides durability with superior breathability
- Sock-like construction wraps the foot for a comfortable, snug fit
- Waterproof styles feature GORE-TEX Invisible Fit lightweight construction for superior waterproof protection with increased flexibility and comfort
- Quick-drying, moisture-wicking, breathable mesh lining
- Dust gaiter compatible
- Updated EXO Heel System features lightweight TPU to provide maximum support and comfort with a reinforced external heel counter
- Cushioning open-cell OrthoLite[®] footbed
- Trailguard platform with exposed TPU shank offers lightweight, athletic performance
- Danner[®] PlyoGo lightweight, shock-absorbing EVA midsole with drainage ports for quick drying
- 8mm heel-to-toe drop
- Vibram[®] 460 outsole with Megagrip technology offers superior grip on wet and dry surfaces

TRAIL 2650 MESH



OrthoLite[®] // TRAILGUARD PlyoGO Vibram MEGAGRIP

STYLE #	HEIGHT	COLOR / PATTERN	WATERPROOF	INSULATION	WEIGHT
61211	3"	Black Shadow	-	-	18 oz
61213	3"	Painted Hills	-	-	18 oz

SIZES

LAST DT6

M: 5.5-10 [½ thru 10]

- Lightweight mesh and textile upper
- Breathable mesh lining
- EXO Heel System provides maximum support and comfort with a reinforced external heel counter
- Cushioning open-cell OrthoLite[®] footbed
- Trailguard platform with exposed TPU shank offers lightweight, athletic performance
- Danner[®] PlyoGo lightweight, shock-absorbing EVA midsole
- 8mm heel-to-toe drop
- Vibram[®] 460 outsole with Megagrip technology offers superior grip on wet and dry surfaces

TRAIL 2650



61288



61274



61283



61284



61300

GORE-TEX PRODUCTS OrthoLite® // TRAILGUARD PlyoGO Vibram MEGAGRIP

- Lightweight, durable suede and textile upper
- GORE-TEX waterproof breathable lining or moisture wicking mesh lining options
- EXO Heel System provides maximum support and comfort with a reinforced external heel counter
- Cushioning open-cell OrthoLite® footbed
- TRAILGUARD platform with exposed TPU shank offers lightweight, athletic performance
- Danner® PlyoGo lightweight, shock-absorbing EVA midsole
- 8mm heel-to-toe drop
- Vibram® 460 outsole with Megagrip technology offers superior grip on wet and dry surfaces

STYLE #	HEIGHT	COLOR / PATTERN	WATERPROOF	INSULATION	WEIGHT
61288	3"	Prairie Sand/Gray	✓	-	21 oz
61274	3"	Hot Sauce	-	-	18 oz
61283	3"	Gray/Blue/Spectra Yellow	-	-	18 oz
61284	3"	Bronze/Wheat	-	-	18 oz
61300	3"	Brown/Red	-	-	18 oz

SIZES

M: 5-11 [½ thru 11]

LAST DT6

TRAIL 2650 MID



GORE-TEX[®] PRODUCTS Ortholite[®] // TRAILGUARD PlyoGO Vibram MEGAGRIP

STYLE #	HEIGHT	COLOR / PATTERN	WATERPROOF	INSULATION	WEIGHT
61244	4"	Marionberry	✓	-	22 oz
61250	4"	Brown/Red	✓	-	22 oz
61251	4"	Black/Khaki	✓	-	22 oz

SIZES

LAST DT6

M: 5-11 [½ thru 11]

- Durable suede or full-grain leather and nylon upper
- GORE-TEX waterproof breathable lining
- EXO Heel System provides maximum support and comfort with a reinforced external heel counter
- Cushioning open-cell OrthoLite[®] footbed
- TRAILGUARD platform with exposed TPU shank offers lightweight, athletic performance
- Danner[®] PlyoGo lightweight, shock-absorbing EVA midsole
- 8mm heel-to-toe drop
- Vibram[®] 460 outsole with Megagrip technology offers superior grip on wet and dry surfaces

PANORAMA MID



DANNER[®] DRY Ortholite[®] PLYOLITE

STYLE #	HEIGHT	COLOR / PATTERN	WATERPROOF	INSULATION	WEIGHT
63434	6"	Brown/Red	✓	-	29 oz
63437	6"	Gray	✓	-	29 oz

SIZES

LAST DPDX

M: 5-11 [½ thru 11]

- Durable suede upper
- PU-coated leather rand on heel and forefoot for added durability and abrasion-resistance
- Danner[®] Dry waterproof protection
- Cushioning open-cell OrthoLite[®] footbed
- Danner[®] Plyolite[®] EVA midsole offers lasting support and rebound
- Wrap-around outsole provides increased protection at base of foot
- Danner[®] Panorama outsole features large, deep lugs for stability and traction in rugged terrain

INQUIRE MID INSULATED



64571

PRIMALOFT. DANNER® DRY PLYOLITE // TRAILGUARD  MEGAGRIP

STYLE #	HEIGHT	COLOR / PATTERN	WATERPROOF	INSULATION	WEIGHT
64571	5"	Hazelwood/Tangerine/Red	✓	200G	29 oz

SIZES

LAST DPDX

M: 5-11 [½ thru 11]

- Lightweight, durable suede and textile upper
- PrimaLoft® AeroGel toe cap and 200G Gold insulation provides optimal warmth with minimal weight
- Danner® Dry waterproof protection
- Fleece lined for ultimate comfort
- Cushioning open-cell OrthoLite® footbed
- TRAILGUARD platform with exposed TPU shank offers lightweight, athletic performance
- Danner® Plyolite® EVA midsole offers lasting support and rebound
- Custom Vibram® Inquire outsole with multi-directional lugs, adaptive heel and Megagrip technology offers superior grip on wet and dry surfaces



INQUIRE CHUKKA



64504



64501



64505

DANNER® DRY Ortholite® **PLYOLITE** // TRAILGUARD   MEGAGRIP

STYLE #	HEIGHT	COLOR / PATTERN	WATERPROOF	INSULATION	WEIGHT
64501	4"	Gray/Plum	✓	-	27 oz
64504	4"	Black	✓	-	27 oz
64505	4"	Iron/Picante	✓	-	27 oz

SIZES

LAST DPDX

M: 5-11 [½ thru 11]

- Durable suede or full-grain leather upper
- Danner® Dry waterproof protection
- Cushioning open-cell OrthoLite® footbed
- TRAILGUARD platform with exposed TPU shank offers lightweight, athletic performance
- Danner® Plyolite® EVA midsole offers lasting support and rebound
- Custom Vibram® Inquire outsole with multi-directional lugs, adaptive heel and Megagrip technology offers superior grip on wet and dry surfaces

INQUIRE MID



NEW 64533



64531

DANNER® DRY Ortholite® **PLYOLITE** // TRAILGUARD   MEGAGRIP

STYLE #	HEIGHT	COLOR / PATTERN	WATERPROOF	INSULATION	WEIGHT
64531	5"	Dark Gray/Salmon	✓	-	29 oz
64533	5"	Golden Oak/Sagebrush	✓	-	29 oz

SIZES

LAST DPDX

M: 5-11 [½ thru 11]

- Lightweight, durable suede and textile upper
- Danner® Dry waterproof protection
- Cushioning open-cell OrthoLite® footbed
- TRAILGUARD platform with exposed TPU shank offers lightweight, athletic performance
- Danner® Plyolite® EVA midsole offers lasting support and rebound
- Custom Vibram® Inquire outsole with multi-directional lugs, adaptive heel and Megagrip technology offers superior grip on wet and dry surfaces

MOUNTAIN 600



DANNER® DRY OrthoLite® Vibram® MEGAGRIP

STYLE #	HEIGHT	COLOR / PATTERN	WATERPROOF	INSULATION	WEIGHT
36235	4.5"	Java/Bossa Nova	✓	-	30 oz
62245	4.5"	Brown/Red	✓	-	30 oz
62286	4.5"	Antique Bronze/Murky Green	✓	-	30 oz
62288	4.5"	Black/Khaki	✓	-	30 oz

SIZES

LAST DPDX

36235 M: 5.5-10 [½ thru 10]

62245 M: 6-11 [½ thru 11]

62286, 62288 M: 5-11 [½ thru 11]

- Waterproof suede upper
- Danner® Dry waterproof protection
- Cushioning open-cell OrthoLite® footbed
- Vibram® SPE midsole for maximum rebound, comfort and support
- Nylon shank
- TPU heel frame to enhance support and stability
- Vibram® Fuga outsole with Megagrip technology offers superior grip on wet and dry surfaces

MOUNTAIN 600 FULL GRAIN



DANNER® DRY OrthoLite® Vibram® MEGAGRIP

STYLE #	HEIGHT	COLOR / PATTERN	WATERPROOF	INSULATION	WEIGHT
62251	4.5"	Rich Brown	✓	-	32 oz
62259	4.5"	Saddle Tan	✓	-	32 oz
62290	4.5"	Chocolate Chip/Golden Oak	✓	-	32 oz

SIZES

LAST DPDX

62251, 62290 M: 5-11 [½ thru 11]

62259 M: 5.5-10 [½ thru 10]

- Durable full-grain leather upper
- Danner® Dry waterproof protection
- Two lace options
- Cushioning open-cell OrthoLite® footbed
- Vibram® SPE midsole for maximum rebound, comfort and support
- Nylon shank
- TPU heel frame to enhance support and stability
- Vibram® Fuga outsole with Megagrip technology offers superior grip on wet and dry surfaces

NEW MOUNTAIN 600 INSULATED



62148

PRIMALOFT. DANNER® DRY Ortholite® Vibram ARCTIC GRIP

STYLE #	HEIGHT	COLOR / PATTERN	WATERPROOF	INSULATION	WEIGHT
62148	4.5"	Pinecone/Brick Red	✓	200G	30 oz

SIZES

LAST DPDX

M: 5-11 [½ thru 11]

- Durable full-grain leather upper with 200G PrimaLoft® Gold insulation
- Danner® Dry waterproof protection
- Cushioning open-cell OrthoLite® footbed
- Vibram® SPE midsole for maximum rebound, comfort and support
- Nylon shank
- TPU heel frame to enhance support and stability
- Vibram® Nisqually Arctic Grip outsole with Arctic Grip AT technology offers superior traction in wet, icy conditions

ARCTIC 600



NEW 67343



67340



67341



NEW 67347

PRIMALOFT. DANNER® DRY Ortholite® Vibram ARCTIC GRIP

STYLE #	HEIGHT	COLOR / PATTERN	WATERPROOF	INSULATION	WEIGHT
67340	7"	Black/Spark Blue	✓	200G	37 oz
67341	7"	Driftwood/Yellow	✓	200G	37 oz
67343	7"	Roasted Pecan/Fired Brick	✓	200G	37 oz
67347	7"	Jet Black/Mojave	✓	200G	37 oz

SIZES

LAST DPDX

M: 5-11 [½ thru 11]

- Premium suede or durable full-grain leather upper with 200G PrimaLoft® Gold insulation
- Danner® Dry waterproof protection
- Semi-locking YKK® Side-Zip
- Cushioning open-cell OrthoLite® footbed
- Vibram® SPE midsole for maximum rebound, comfort and support
- Nylon shank
- TPU heel frame to enhance support and stability
- Vibram® Nisqually Arctic Grip outsole with Arctic Grip AT technology offers superior traction in wet, icy conditions

MOUNTAIN LIGHT II



30800

GORE-TEX PRODUCTS // STITCHDOWN 



STYLE #	HEIGHT	COLOR / PATTERN	WATERPROOF	INSULATION	WEIGHT
30800	5"	Brown	✓	-	62 oz

SIZES

LAST 650

M: 5-11 [½ thru 10]

- **Made in the USA**
- Durable, one-piece full-grain leather upper
- GORE-TEX waterproof breathable lining
- Danner® Airthotic® heel cradle and arch support
- Fiberglass shank
- Handcrafted, stitchdown construction for strength and stability
- Vibram® 148 Kletterlift® outsole offers superior traction, stability and shock absorption on rugged terrain
- Recraftable

EXPLORER



45200

GORE-TEX PRODUCTS // STITCHDOWN 



STYLE #	HEIGHT	COLOR / PATTERN	WATERPROOF	INSULATION	WEIGHT
45200	6"	Brown	✓	-	58 oz

SIZES

LAST 650

M: 5-10 [½ thru 10]

- **Made in the USA**
- Durable full-grain leather upper
- GORE-TEX waterproof breathable lining
- Danner® Airthotic® heel cradle and arch support
- Fiberglass shank
- Handcrafted, stitchdown construction for strength and stability
- Vibram® 148 Kletterlift® outsole offers superior traction, stability and shock absorption on rugged terrain
- Recraftable

DANNER® LIGHT II



33000

GORE-TEX® PRODUCTS // STITCHDOWN



STYLE #	HEIGHT	COLOR / PATTERN	WATERPROOF	INSULATION	WEIGHT
33000	6"	Brown	✓	-	61 oz

SIZES

LAST 650

M: 5.5-10 [½ thru 10]

- **Made in the USA**
- Durable nubuck leather upper with rugged 1000 denier nylon
- GORE-TEX waterproof breathable lining
- Danner® Airthotic® heel cradle and arch support
- Fiberglass shank
- Handcrafted, stitchdown construction for strength and stability
- Vibram® 148 Kletterlift outsole offers superior traction, stability and shock absorption on rugged terrain
- Recraftable

CRATER RIM



37414

GORE-TEX® PRODUCTS



STYLE #	HEIGHT	COLOR / PATTERN	WATERPROOF	INSULATION	WEIGHT
37414	6"	Brown	✓	-	58 oz

SIZES

LAST 610

M: 5-11 [½ thru 10]

- **Made in the USA**
- Durable, waterproof nubuck leather upper
- 360° abrasion-resistant Vibram® rubber rand
- GORE-TEX waterproof breathable lining
- D-ring hardware and lace-to-toe design for secure fit
- Cushioning PU footbed
- Fiberglass shank
- Vibram® Bifida outsole offers super traction on rugged terrain



MEN'S LIFESTYLE

NEW **LOGGER MOC 917**



GORE-TEX PRODUCTS **OrthoLite** **Vibram**

STYLE #	HEIGHT	COLOR / PATTERN	WATERPROOF	INSULATION	WEIGHT
30741	6"	Bone Brown	✓	-	35 oz
30743	6"	Charcoal	✓	-	35 oz

SIZES AVAILABLE IN WOMEN'S **LAST** 971X

D: 7-14 [1/2 thru 12]

- **Recraftable**
- Premium, durable nubuck upper
- GORE-TEX waterproof breathable lining
- Moc toe design with contrasting stitch
- Two lace options
- Cushioning open-cell OrthoLite® footbed
- Vibram® SPE midsole for maximum rebound, comfort and support
- Exclusive Vibram® 917 outsole featuring XS Trek® for optimal traction in urban environments
- Modernized stitchdown construction for classic Danner look and added stability

NEW **TRAMLINE CHELSEA 917**



GORE-TEX PRODUCTS **OrthoLite** **Vibram**

STYLE #	HEIGHT	COLOR / PATTERN	WATERPROOF	INSULATION	WEIGHT
34200	6"	Roasted Pecan	✓	-	29 oz
34202	6"	Major Brown	✓	-	29 oz

SIZES AVAILABLE IN WOMEN'S **LAST** 971X

D: 7-14 [1/2 thru 12]

- **Recraftable**
- Premium, durable nubuck upper
- GORE-TEX waterproof breathable lining
- Elastic side panels for easy on/off
- Cushioning open-cell OrthoLite® footbed
- Vibram® SPE midsole for maximum rebound, comfort and support
- Exclusive Vibram® 917 outsole featuring XS Trek® for optimal traction in urban environments
- Modernized stitchdown construction for classic Danner look and added stability

LOGGER 917



GORE-TEX[®] PRODUCTS OrthoLite[®] Vibram[®]

STYLE #	HEIGHT	COLOR / PATTERN	WATERPROOF	INSULATION	WEIGHT
34610	6"	Black	✓	-	36 oz
34651	6"	Monk's Robe	✓	-	36 oz
34658	6"	Charcoal	✓	-	36 oz
34650	6"	Chocolate Chip	-	-	35 oz

SIZES AVAILABLE IN WOMEN'S

LAST 971X

D: 7-14 [1/2 thru 12]

- Durable full-grain leather upper
- Select styles available with GORE-TEX waterproof breathable lining
- Two lace options
- Optional logger style kiltie for added protection
- Cushioning open-cell OrthoLite[®] footbed
- Vibram[®] SPE midsole for maximum rebound, comfort and support
- Exclusive Vibram[®] 917 outsole featuring XS Trek[®] for optimal traction in urban environments
- Modernized stitchdown construction for classic Danner look and added stability

VERTIGO 917



GORE-TEX[®] PRODUCTS OrthoLite[®] Vibram[®]

STYLE #	HEIGHT	COLOR / PATTERN	WATERPROOF	INSULATION	WEIGHT
32380	5"	Black	✓	-	35 oz
32381	5"	Light Brown	✓	-	35 oz
32390	5"	Roasted Pecan	✓	-	35 oz

SIZES AVAILABLE IN WOMEN'S

LAST 971X

32380, 32381 D: 7-13 [1/2 thru 12]

32390 D: 7-14 [1/2 thru 12]

- Premium suede or durable full-grain leather upper
- GORE-TEX waterproof breathable lining
- Cushioning open-cell OrthoLite[®] footbed
- Vibram[®] SPE midsole for maximum rebound, comfort and support
- Exclusive Vibram[®] 917 outsole featuring XS Trek[®] for optimal traction in urban environments
- Modernized stitchdown construction for classic Danner look and added stability

FREE SPIRIT



37534



37531



37532

GORE-TEX PRODUCTS **OrthoLite** **PLYOLITE**  **MEGAGRIP**

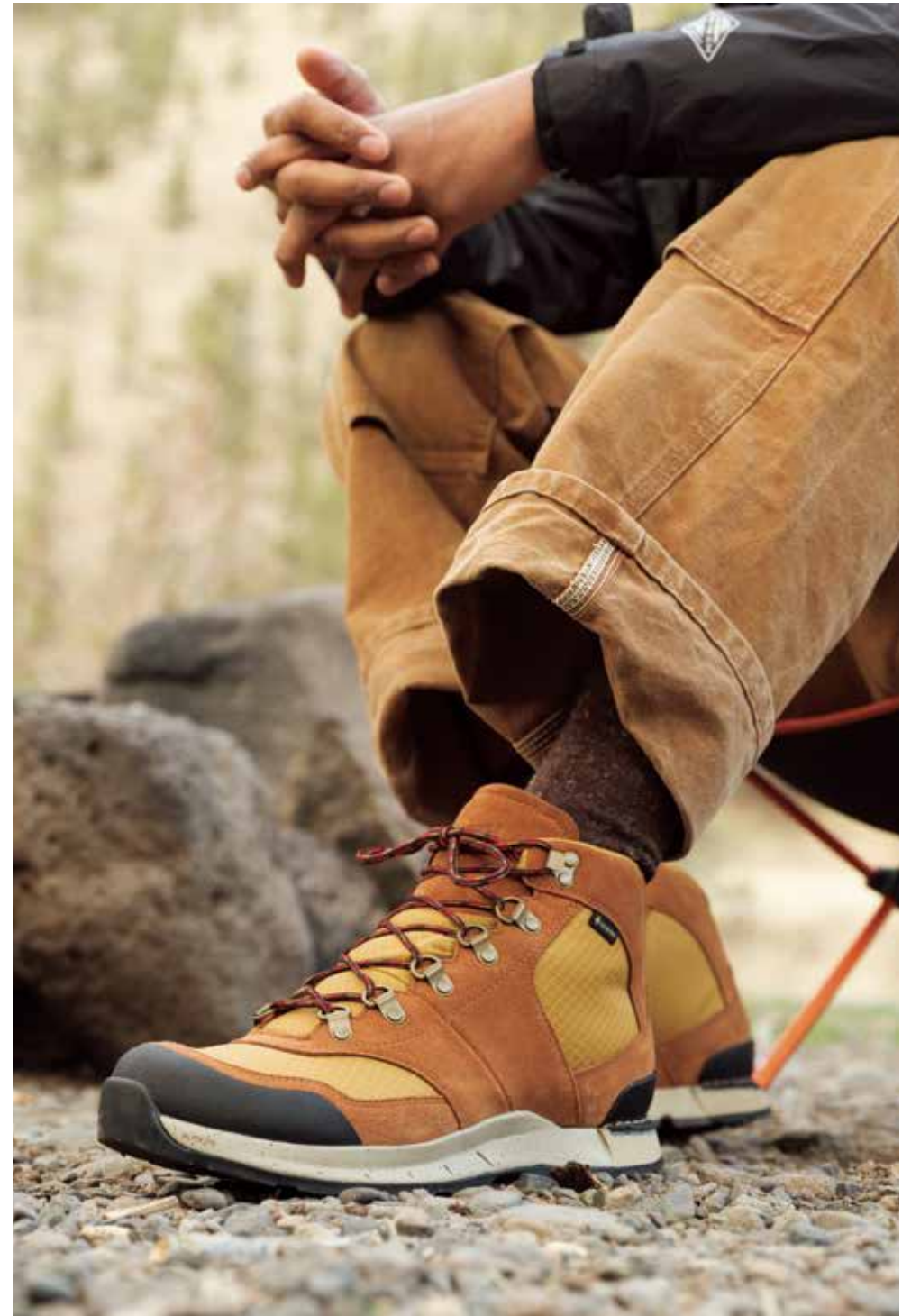
STYLE #	HEIGHT	COLOR / PATTERN	WATERPROOF	INSULATION	WEIGHT
37531	4.5"	Monk's Robe	✓	-	37 oz
37532	4.5"	Dark Earth	✓	-	37 oz
37534	4.5"	Brown/Navy	✓	-	37 oz

SIZES AVAILABLE IN WOMEN'S

LAST DT6

D: 7-14 [1/2 thru 12]

- Durable suede and textile upper
- GORE-TEX waterproof breathable lining
- Cushioning open-cell OrthoLite® footbed
- Dual density Plyolite® midsole offers support with a firm compound along the outside of the foot for stability and a softer compound underfoot for increased comfort and cushion
- Bi-Fit stability board for underfoot comfort, reduced weight and added forefoot flex
- Stitchdown heel provides added stability
- Exclusive Vibram® Overlook outsole with Megagrip technology features adaptive lugs and ample surface contact for versatile traction in urban and outdoor environments



MOUNTAIN OVERLOOK



Ortholite® **PLYOLITE**  **MEGAGRIP**

STYLE #	HEIGHT	COLOR / PATTERN	WATERPROOF	INSULATION	WEIGHT
31790	3"	Monk's Robe	-	-	29 oz
31792	3"	Charcoal	-	-	29 oz

SIZES AVAILABLE IN WOMEN'S

LAST DT6

D: 7-14 [½ thru 12]

- Durable nubuck leather upper
- Arch Wrap provides an athletic fit with additional support and comfort
- Cushioning open-cell OrthoLite® footbed
- Dual density Plyolite® midsole offers support with a firm compound along the outside of the foot for stability and a softer compound underfoot for increased comfort and cushion
- Bi-Fit stability board for underfoot comfort, reduced weight and added forefoot flex
- TPU heel clip provides support and stability
- Exclusive Vibram® Overlook outsole with Megagrip technology features adaptive lugs and ample surface contact for versatile traction in urban and outdoor environments

DESERT OVERLOOK



Ortholite® **PLYOLITE**  **MEGAGRIP**

STYLE #	HEIGHT	COLOR / PATTERN	WATERPROOF	INSULATION	WEIGHT
31753	3"	Black	-	-	24 oz
31755	3"	Glazed Ginger	-	-	24 oz
31757	3"	Silver Sage	-	-	24 oz

SIZES

LAST DT6

D: 7-14 [½ thru 12]

- Micro-mesh ripstop nylon and TPU upper provides durability and maximum breathability
- DWR coating for water resistance
- Integrated dirt gaiter offers protection from sand and debris entering shoe
- Arch Wrap provides an athletic fit with additional support and comfort
- Vegan construction
- Cushioning open-cell OrthoLite® footbed
- Dual density Plyolite® midsole offers support with a firm compound along the outside of the foot for stability and a softer compound underfoot for increased comfort and cushion
- Bi-Fit stability board for underfoot comfort, reduced weight and added forefoot flex
- TPU heel clip provides support and stability
- Exclusive Vibram® Overlook outsole with Megagrip technology features adaptive lugs and ample surface contact for versatile traction in urban and outdoor environments

OVERLOOK



31710

31711

OrthoLite® **PLYOLITE**  **MEGAGRIP**

STYLE #	HEIGHT	COLOR / PATTERN	WATERPROOF	INSULATION	WEIGHT
31710	3"	Glazed Ginger/Orion	-	-	25 oz
31711	3"	Jet Black	-	-	25 oz

SIZES AVAILABLE IN WOMEN'S

LAST DT6

D: 7-14 [½ thru 12]

- Durable nubuck and abrasion-resistant EnduroKnit upper with water-resistant and stain-proof DWR coating
- Cushioning open-cell OrthoLite® footbed
- Dual density Plyolite® midsole offers support with a firm compound along the outside of the foot for stability and a softer compound underfoot for increased comfort and cushion
- Bi-Fit stability board for underfoot comfort, reduced weight and added forefoot flex
- Stitchdown heel provides added stability
- Exclusive Vibram® Overlook outsole with Megagrip technology features adaptive lugs and ample surface contact for versatile traction in urban and outdoor environments

SHELTER COVE SLIDE



36442

36440

 **MEGAGRIP**

STYLE #	HEIGHT	COLOR / PATTERN	WATERPROOF	INSULATION	WEIGHT
36440	-	Black	-	-	19 oz
36442	-	Forest	-	-	19 oz

SIZES AVAILABLE IN WOMEN'S

LAST 828

D: 6-14 [whole sizes only]

- Ergonomically contoured footbed for maximum comfort
- Dual strap design provides a secure fit and allows forefoot flex
- Plush EVA midsole for superior cushioning
- Vibram® Black Sand outsole with Megagrip technology offers superior grip on wet and dry surfaces

DOUGLAS



32000

32002

GORE-TEX
PRODUCTS

OrthoLite®



STYLE #	HEIGHT	COLOR / PATTERN	WATERPROOF	INSULATION	WEIGHT
32000	6"	Roasted Pecan	✓	-	45 oz
32002	6"	Charcoal	✓	-	45 oz

SIZES AVAILABLE IN WOMEN'S

LAST 828

D: 7-14 [½ thru 12]

- **Made in USA with imported components**
- Premium, durable full-grain leather upper
- GORE-TEX waterproof breathable lining
- Cushioning open-cell OrthoLite® footbed
- Steel shank
- Danner® Wedge non-marking, oil-and-slip-resistant outsole offers superior traction in urban environments
- Completely recraftable, including waterproof GORE-TEX lining, lace hardware, outsole, midsole, toe cap, heel counter and stitches

PINE GROVE CHUKKA



30600

30601

OrthoLite®



STYLE #	HEIGHT	COLOR / PATTERN	WATERPROOF	INSULATION	WEIGHT
30600	5"	Roasted Pecan	-	-	42 oz
30601	5"	Charcoal	-	-	42 oz

SIZES

LAST 828

D: 7-14 [½ thru 12]

- **Made in USA with imported components**
- Premium, durable full-grain leather upper
- Cushioning open-cell OrthoLite® footbed
- Steel shank
- Danner® Wedge non-marking, oil-and-slip-resistant outsole offers superior traction in urban environments
- Completely recraftable, including lace hardware, outsole, midsole, toe cap, heel counter and stitches

NEW CEDAR GROVE



38211



38212



STYLE #	HEIGHT	COLOR / PATTERN	WATERPROOF	INSULATION	WEIGHT
38211	6"	Bone Brown	✓	-	51 oz
38212	6"	Black	✓	-	51 oz

SIZES AVAILABLE IN WOMEN'S

LAST DPDX2

D: 7-14 [1/2 thru 12]

- Premium, durable full-grain upper
- GORE-TEX waterproof breathable lining
- Cushioning open-cell OrthoLite® footbed
- Steel shank
- Vibram® Sellwood outsole with Megegrip technology for reliable grip on wet and dry surfaces
- Completely recraftable, including waterproof GORE-TEX lining, lace hardware, outsole, midsole, toecap, heel counter and stitches

JACK II



34342



34340

STYLE #	HEIGHT	COLOR / PATTERN	WATERPROOF	INSULATION	WEIGHT
34340	4.5"	Black	-	-	42 oz
34342	4.5"	Dark Coffee	-	-	42 oz

SIZES

LAST 971

EE: 7-13 [1/2 thru 12]

- Premium full-grain leather upper
- PU footbed offers lightweight cushioning and lasting durability
- Oil-stained leather bend for classic gentleman's boot fit
- 270-degree stitchdown construction
- Danner Dekum outsole provides classic gentleman's boot silhouette

JAG



DANNER® DRY OrthoLite®

STYLE #	HEIGHT	COLOR / PATTERN	WATERPROOF	INSULATION	WEIGHT
32238	4.5"	Monk's Robe/Jet Black	✓	-	34 oz
32240	4.5"	Sierra/Chocolate Chip	✓	-	34 oz
32243	4.5"	Bracken/Orion	✓	-	34 oz
37352	4.5"	Steel Gray/Blue Wing	✓	-	34 oz

SIZES AVAILABLE IN WOMEN'S

LAST DPDX

32238, 32240, 32243 D: 7-14 [½ thru 12]

37352 D: 7-13 [½ thru 12]

- Durable suede or nubuck leather and textile upper
- Danner® Dry waterproof protection
- Two lace options
- Cushioning open-cell OrthoLite® footbed
- Lightweight, shock-absorbing EVA midsole
- Danner® Waffle rubber outsole with classic hiking tread pattern
- **Available in seasonal colors. See pg. 39**

MATERIALS [32240, 32243]

Textile 66% Recycled PET & 34% Seawool

Midsole 20% Recycled EVA

Outsole 10% Recycled rubber

JAG DRY WEATHER



OrthoLite®

STYLE #	HEIGHT	COLOR / PATTERN	WATERPROOF	INSULATION	WEIGHT
37240	4.5"	Brown/Goblin Blue	-	-	34 oz
37244	4.5"	Birch/Picante	-	-	34 oz

SIZES AVAILABLE IN WOMEN'S

LAST DPDX

D: 7-14 [½ thru 12]

- Durable suede and mesh upper
- Breathable mesh lining
- Two lace options
- Cushioning open-cell OrthoLite® footbed
- Lightweight, shock-absorbing EVA midsole
- Danner® Waffle rubber outsole with classic hiking tread pattern

JAG LOW



37405



37402

OrthoLite®

STYLE #	HEIGHT	COLOR / PATTERN	WATERPROOF	INSULATION	WEIGHT
37402	3"	Dark Earth/Goblin Blue	-	-	29 oz
37405	3"	Steel Gray	-	-	29 oz

SIZES

LAST DPDX

D: 7-14 [½ thru 12]

- Durable suede and textile upper
- Breathable mesh lining
- Two lace options
- Cushioning open-cell OrthoLite® footbed
- Lightweight, shock-absorbing EVA midsole
- Danner® Waffle rubber outsole with classic hiking tread pattern

JAG LOFT



NEW 36942



36940



36944

PRIMALOFT. OrthoLite®

STYLE #	HEIGHT	COLOR / PATTERN	WATERPROOF	INSULATION	WEIGHT
36940	3"	Steel Gray	-	200G	22 oz
36942	3"	Midnight	-	200G	22 oz
36944	3"	Laurel	-	200G	22 oz

SIZES AVAILABLE IN WOMEN'S

LAST DPDX

D: 7-14 [½ thru 12]

- Durable suede and textile upper with 200G PrimaLoft® Gold insulation
- Collapsible heel for versatile wear and easy on/off
- Fleece-lined interior for additional comfort
- Cushioning open-cell OrthoLite® footbed
- Lightweight, shock-absorbing EVA midsole made with 20% recycled material
- Danner® Waffle outsole with FrostTrekker rubber compound for traction in cold weather
- **Available in seasonal colors. See pg. 39**

FOREST CHUKKA



37640

37641

STYLE #	HEIGHT	COLOR / PATTERN	WATERPROOF	INSULATION	WEIGHT
37640	4.5"	Timberwolf	-	-	28 oz
37641	4.5"	Bracken	-	-	28 oz

SIZES AVAILABLE IN WOMEN'S

LAST 677

D: 7-14 [½ thru 12]

- Premium, durable nubuck upper
- 360-degree leather lined for comfort and natural moisture-wicking
- Low-density PU footbed offers lightweight cushioning and lasting durability
- Nylon shank
- Lightweight, packable design with interlocking outsoles
- Danner® Nomad outsole features natural reground rubber

FOREST MOC



37683

37682

STYLE #	HEIGHT	COLOR / PATTERN	WATERPROOF	INSULATION	WEIGHT
37682	5"	Chestnut	-	-	24 oz
37683	5"	Black/Monk's Robe	-	-	24 oz

SIZES AVAILABLE IN WOMEN'S

LAST 677

D: 7-14 [½ thru 12]

- Premium, durable shearling upper with natural wool insulation
- Leather lined footbed for comfort and natural moisture-wicking
- Low-density PU footbed offers lightweight cushioning and lasting durability
- Nylon shank
- Lightweight, packable design with interlocking outsoles
- Danner® Nomad outsole features natural reground rubber

CLOUD CAP



PRIMALOFT. DANNER® DRY Ortholite® PLYOLITE Vibram ARCTIC GRIP

STYLE #	HEIGHT	COLOR / PATTERN	WATERPROOF	INSULATION	WEIGHT
38520	7"	Coyote	✓	400G	37 oz
38521	7"	Black	✓	400G	37 oz

SIZES AVAILABLE IN WOMEN'S

LAST DPDX

D: 7-14 [½ thru 12]

- Durable suede and textile upper with 400G PrimaLoft® Gold insulation
- Drawstring closure provides easy entry and keeps the elements out
- Danner® Dry waterproof protection
- Cushioning open-cell OrthoLite® footbed
- Danner® Plyolite® rubberized EVA midsole offers lasting support and rebound
- Vibram® Nisqually Arctic Grip outsole with Arctic Grip AT technology offers superior traction in wet, icy conditions
- **Available in seasonal colors. See pg. 38**

SKYRIDGE



DANNER® DRY Ortholite®

STYLE #	HEIGHT	COLOR / PATTERN	WATERPROOF	INSULATION	WEIGHT
30162	4.5"	Dark Earth	✓	-	35 oz
30165	4.5"	Cathay Spice	✓	-	35 oz

SIZES

LAST DPDX

D: 7-13 [½ thru 12]

- Durable suede and textile upper
- Danner® Dry waterproof protection
- Two lace options
- Cushioning open-cell OrthoLite® footbed
- EVA cushioning and shock absorbing midsole
- Danner® Mountain Tread outsole with multi-directional lugs



SEASONAL

CLOUD CAP



38525

PRIMALOFT. DANNER® DRY OrthoLite® PLYOLITE Vibram ARCTIC GRIP

STYLE #	HEIGHT	COLOR / PATTERN	WATERPROOF	INSULATION	WEIGHT
38525	7"	Orion	✓	400G	37 oz

SIZES

LAST DPDX

D: 7-14 [1½ thru 12]

- Durable suede and textile upper with 400G PrimaLoft® Gold insulation
- Drawstring closure provides easy entry and keeps the elements out
- Danner® Dry waterproof protection
- Cushioning open-cell OrthoLite® footbed
- Danner® Plyolite® rubberized EVA midsole offers lasting support and rebound
- Vibram® Nisqually Arctic Grip outsole with Arctic Grip AT technology offers superior traction in wet, icy conditions

SEASONAL

JAG LOFT



36946

PRIMALOFT. OrthoLite®

STYLE #	HEIGHT	COLOR / PATTERN	WATERPROOF	INSULATION	WEIGHT
36946	3"	Ursa Blue	-	200G	22 oz

SIZES AVAILABLE IN WOMEN'S

LAST DPDX

D: 7-14 [½ thru 12]

- Durable suede and textile upper with 200G PrimaLoft® Gold insulation
- Collapsible heel for versatile wear and easy on/off
- Fleece-lined interior for additional comfort
- Cushioning open-cell OrthoLite® footbed
- Lightweight, shock-absorbing EVA midsole made with 20% recycled material
- Danner® Waffle outsole with FrostTrekker rubber compound for traction in cold weather

SEASONAL

JAG



37378

DANNER® DRY OrthoLite®

STYLE #	HEIGHT	COLOR / PATTERN	WATERPROOF	INSULATION	WEIGHT
37378	4.5"	Roasted Pecan/Spruce	✓	-	34 oz

SIZES AVAILABLE IN WOMEN'S

LAST DPDX

D: 7-13 [½ thru 12]

- Durable suede and textile upper
- Danner® Dry waterproof protection
- Two lace options
- Cushioning open-cell OrthoLite® footbed
- Lightweight, shock-absorbing EVA midsole
- Danner® Waffle rubber outsole with classic hiking tread pattern

MATERIALS

Textile 66% Recycled PET & 34% Seawool

Midsole 20% Recycled EVA

Outsole 10% Recycled rubber



WOMEN'S LIFESTYLE

NEW **LOGGER MOC 917**



GORE-TEX PRODUCTS **OrthoLite** **Vibram**

STYLE #	HEIGHT	COLOR / PATTERN	WATERPROOF	INSULATION	WEIGHT
30742	6"	Roasted Pecan	✓	-	26 oz
30744	6"	Charcoal	✓	-	26 oz

SIZES **LAST 971X**

M: 5-11 [1/2 thru 10]

- **Recraftable**
- Premium, durable nubuck upper
- GORE-TEX waterproof breathable lining
- Moc toe design with contrasting stitch
- Two lace options
- Cushioning open-cell OrthoLite® footbed
- Vibram® SPE midsole for maximum rebound, comfort and support
- Exclusive Vibram® 917 outsole featuring XS Trek® for optimal traction in urban environments
- Modernized stitchdown construction for classic Danner look and added stability

NEW **TRAMLINE CHELSEA 917**



GORE-TEX PRODUCTS **OrthoLite** **Vibram**

STYLE #	HEIGHT	COLOR / PATTERN	WATERPROOF	INSULATION	WEIGHT
34201	6"	Roasted Pecan	✓	-	22 oz
34203	6"	Major Brown	✓	-	22 oz

SIZES **LAST 971X**

M: 5-11 [1/2 thru 10]

- **Recraftable**
- Premium, durable nubuck upper
- GORE-TEX waterproof breathable lining
- Elastic side panels for easy on/off
- Cushioning open-cell OrthoLite® footbed
- Vibram® SPE midsole for maximum rebound, comfort and support
- Exclusive Vibram® 917 outsole featuring XS Trek® for optimal traction in urban environments
- Modernized stitchdown construction for classic Danner look and added stability

LOGGER 917



GORE-TEX PRODUCTS OrthoLite® Vibram®

STYLE #	HEIGHT	COLOR / PATTERN	WATERPROOF	INSULATION	WEIGHT
34653	6"	Monk's Robe	✓	-	29 oz
34654	6"	Charcoal	✓	-	29 oz

SIZES LAST 971X

M: 5.5-10 [½ thru 10]

- Durable suede or full-grain leather upper
- Select styles available with GORE-TEX waterproof breathable lining
- Two lace options
- Optional logger style kiltie for added protection
- Cushioning open-cell OrthoLite® footbed
- Vibram® SPE midsole for maximum rebound, comfort and support
- Exclusive Vibram® 917 outsole featuring XS Trek® for optimal traction in urban environments
- Modernized stitchdown construction for classic Danner look and added stability

VERTIGO 917



GORE-TEX PRODUCTS OrthoLite® Vibram®

STYLE #	HEIGHT	COLOR / PATTERN	WATERPROOF	INSULATION	WEIGHT
32385	5"	Black	✓	-	29 oz
32386	5"	Cathay Spice	✓	-	29 oz
32391	5"	Roasted Pecan	✓	-	29 oz

SIZES LAST 971X

M: 5.5-10 [½ thru 10]

- Premium suede or durable full-grain leather upper
- GORE-TEX waterproof breathable lining
- Two lace options
- Cushioning open-cell OrthoLite® footbed
- Vibram® SPE midsole for maximum rebound, comfort and support
- Exclusive Vibram® 917 outsole featuring XS Trek® for optimal traction in urban environments
- Modernized stitchdown construction for classic Danner look and added stability

FREE SPIRIT



NEW 37536

37535

GORE-TEX PRODUCTS OrthoLite® PLYOLITE Vibram® MEGAGRIP

STYLE #	HEIGHT	COLOR / PATTERN	WATERPROOF	INSULATION	WEIGHT
37535	4.5"	Brown/Navy	✓	-	26 oz
37536	4.5"	Bone Brown/Pumpkin Puree	✓	-	26 oz

SIZES

LAST DT6

M: 5.5-10 [½ thru 10]

- Durable suede and textile upper
- GORE-TEX waterproof breathable lining
- Cushioning open-cell OrthoLite® footbed
- Dual density Plyolite® midsole offers support with a firm compound along the outside of the foot for stability and a softer compound underfoot for increased comfort and cushion
- Bi-Fit stability board for underfoot comfort, reduced weight and added forefoot flex
- Stitchdown heel provides added stability
- Exclusive Vibram® Overlook outsole with Megagrip technology features adaptive lugs and ample surface contact for versatile traction in urban and outdoor environments

MOUNTAIN OVERLOOK



31791

OrthoLite® PLYOLITE Vibram® MEGAGRIP

STYLE #	HEIGHT	COLOR / PATTERN	WATERPROOF	INSULATION	WEIGHT
31791	3"	Monk's Robe	-	-	22 oz

SIZES

LAST DT6

M: 5.5-10 [½ thru 10]

- Durable nubuck leather upper
- Arch Wrap provides an athletic fit with additional support and comfort
- Cushioning open-cell OrthoLite® footbed
- Dual density Plyolite® midsole offers support with a firm compound along the outside of the foot for stability and a softer compound underfoot for increased comfort and cushion
- Bi-Fit stability board for underfoot comfort, reduced weight and added forefoot flex
- TPU heel clip provides support and stability
- Exclusive Vibram® Overlook outsole with Megagrip technology features adaptive lugs and ample surface contact for versatile traction in urban and outdoor environments

OVERLOOK



31713

OrthoLite® PLYOLITE  MEGAGRIP

STYLE #	HEIGHT	COLOR / PATTERN	WATERPROOF	INSULATION	WEIGHT
31713	3"	Jet Black	-	-	20 oz

SIZES

LAST DT6

M: 5.5-10 [1/2 thru 10]

- Durable nubuck and abrasion-resistant EnduroKnit upper with water-resistant and stain-proof DWR coating
- Cushioning open-cell OrthoLite® footbed
- Dual density midsole provides support along the outside of the foot with a softer compound underfoot for increased comfort and cushion
- Bi-Fit stability board for underfoot comfort, reduced weight and added forefoot flex
- Stitchdown heel provides added stability
- Exclusive Vibram® Overlook outsole with Megagrip technology features adaptive lugs and ample surface contact for versatile traction in urban and outdoor environments

SHELTER COVE SLIDE



36443

36441

 MEGAGRIP

STYLE #	HEIGHT	COLOR / PATTERN	WATERPROOF	INSULATION	WEIGHT
36641	-	Black	-	-	16 oz
36643	-	Potter's Clay	-	-	16 oz

SIZES

LAST 828

M: 5-11 [whole sizes only]

- Ergonomically contoured footbed for maximum comfort
- Dual strap design provides a secure fit and allows forefoot flex
- Plush EVA midsole for superior cushioning
- Vibram® Black Sand outsole with Megagrip technology offers superior grip on wet and dry surfaces

DOUGLAS



GORE-TEX[®] OrthoLite[®]



STYLE #	HEIGHT	COLOR / PATTERN	WATERPROOF	INSULATION	WEIGHT
32001	6"	Roasted Pecan	✓	-	35 oz
32003	6"	Black	✓	-	35 oz

SIZES **LAST** 828

M: 5-11 [1/2 thru 10]

- **Made in USA with imported components**
- Premium, durable full-grain leather upper
- GORE-TEX waterproof breathable lining
- Cushioning open-cell OrthoLite[®] footbed
- Steel shank
- Danner[®] Wedge non-marking, oil-and-slip-resistant outsole offers superior traction in urban environments
- Completely recraftable, including waterproof GORE-TEX lining, lace hardware, outsole, midsole, toe cap, heel counter and stitches

NEW CEDAR GROVE



GORE-TEX[®] OrthoLite[®]  MEGAGRIP

STYLE #	HEIGHT	COLOR / PATTERN	WATERPROOF	INSULATION	WEIGHT
38213	6"	Bone Brown	✓	-	42 oz
38214	6"	Black	✓	-	42 oz

SIZES **LAST** DPDX2

M: 5-11 [1/2 thru 10]

- Premium, durable full-grain upper
- GORE-TEX waterproof breathable lining
- Cushioning open-cell OrthoLite[®] footbed
- Steel shank
- Vibram[®] Sellwood outsole with Megegrip technology for reliable grip on wet and dry surfaces
- Completely recraftable, including waterproof GORE-TEX lining, lace hardware, outsole, midsole, toecap, heel counter and stitches

FOREST CHUKKA



37642

37643

STYLE #	HEIGHT	COLOR / PATTERN	WATERPROOF	INSULATION	WEIGHT
37642	4.5"	Timberwolf	-	-	21 oz
37643	4.5"	Bracken	-	-	21 oz

SIZES

LAST 677

M: 5.5-10 [½ thru 10]

- Premium, durable nubuck upper
- 360-degree leather lined for comfort and natural moisture-wicking
- Low-density PU footbed offers lightweight cushioning and lasting durability
- Nylon shank
- Lightweight, packable design with interlocking outsoles
- Danner® Nomad outsole features natural reground rubber

FOREST MOC



37684

37643

STYLE #	HEIGHT	COLOR / PATTERN	WATERPROOF	INSULATION	WEIGHT
37680	5"	Chestnut	-	-	19 oz
37684	5"	Black/Monk's Robe	-	-	19 oz

SIZES

LAST 677

37643 M: 5.5-10 [½ thru 10]

37684 M: 5-11 [½ thru 10]

- Premium, durable shearling upper with natural wool insulation
- Leather-lined footbed for comfort and natural moisture-wicking
- Low-density PU footbed offers lightweight cushioning and lasting durability
- Nylon shank
- Lightweight, packable design with interlocking outsoles
- Danner® Nomad outsole features natural reground rubber

ADRIKA



30324



30131



30135

DANNER® DRY OrthoLite® PLYOLITE

STYLE #	HEIGHT	COLOR / PATTERN	WATERPROOF	INSULATION	WEIGHT
30131	5"	Sienna	✓	-	29 oz
30135	5"	Rock Ridge	✓	-	29 oz
30324	5"	Jet Black/Mojave	✓	-	29 oz

SIZES

LAST DPDX

30131 M: 5-10 [½ thru 10]

30135, 30324 M: 5.5-10 [½ thru 10]

- Durable suede or nubuck and nylon upper
- Danner® Dry waterproof protection
- Two lace options
- Cushioning open-cell OrthoLite® footbed
- Danner® Plyolite® EVA midsole offers lasting support and rebound
- Danner® Adrika outsole with multi-direction lugs
- Available in seasonal colors. See pg. 50

JAG



NEW 32244



32242



37356

DANNER® DRY OrthoLite®

STYLE #	HEIGHT	COLOR / PATTERN	WATERPROOF	INSULATION	WEIGHT
32242	4.5"	Sierra/Chocolate Chip	✓	-	29 oz
32244	4.5"	Bracken/Orion	✓	-	29 oz
37356	4.5"	Steel Gray/Blue Wing Teal	✓	-	29 oz

SIZES

LAST DPDX

M: 5.5-10 [½ thru 10]

- Durable suede or nubuck leather and textile upper
- Danner® Dry waterproof protection
- Two lace options
- Cushioning open-cell OrthoLite® footbed
- Lightweight, shock-absorbing EVA midsole
- Danner® Waffle rubber outsole with classic hiking tread pattern
- Available in seasonal colors. See pg. 50

MATERIALS [32242, 32244]

Textile 66% Recycled PET & 34% Seawool

Midsole 20% Recycled EVA

Outsole 10% Recycled rubber

JAG FULL GRAIN



37359

DANNER® DRY OrthoLite®

STYLE #	HEIGHT	COLOR / PATTERN	WATERPROOF	INSULATION	WEIGHT
37359	4.5"	Distressed Brown/Deep Teal	✓	-	29 oz

SIZES

LAST DPDX

M: 5.5-10 [½ thru 10]

- Premium full-grain leather and textile upper
- Danner® Dry waterproof protection
- Two lace options
- Cushioning open-cell OrthoLite® footbed
- Lightweight, shock-absorbing EVA midsole
- Danner® Waffle rubber outsole with classic hiking tread pattern

JAG DRY WEATHER



37245

OrthoLite®

STYLE #	HEIGHT	COLOR / PATTERN	WATERPROOF	INSULATION	WEIGHT
37245	4.5"	Birch/Picante	-	-	29 oz

SIZES

LAST DPDX

M: 5.5-10 [½ thru 10]

- Durable suede and mesh upper
- Breathable mesh lining
- Two lace options
- Cushioning open-cell OrthoLite® footbed
- Lightweight, shock-absorbing EVA midsole
- Danner® Waffle rubber outsole with classic hiking tread pattern

JAG LOFT



PRIMALOFT. OrthoLite®

STYLE #	HEIGHT	COLOR / PATTERN	WATERPROOF	INSULATION	WEIGHT
36941	3"	Steel Gray	-	200G	19 oz
36943	3"	Midnight	-	200G	19 oz
36945	3"	Bossa Nova	-	200G	19 oz

SIZES

LAST DPDX

M: 5-11 [½ thru 10]

- Durable suede and textile upper with 200G PrimaLoft® Gold insulation
- Collapsible heel for versatile wear and easy on/off
- Fleece lined interior for additional comfort
- Cushioning open-cell OrthoLite® footbed
- Lightweight, shock-absorbing EVA midsole made with 20% recycled material
- Danner® Waffle outsole w/ FrostTrekker rubber compound for traction in cold weather
- **Available in seasonal colors. See pg. 51**

CLOUD CAP



PRIMALOFT. DANNER® DRY OrthoLite® **PLYOLITE**  **ARCTIC GRIP**

STYLE #	HEIGHT	COLOR / PATTERN	WATERPROOF	INSULATION	WEIGHT
38522	7"	Coyote	✓	400G	31 oz
38523	7"	Black	✓	400G	31 oz

SIZES

LAST DPDX

M: 5.5-10 [½ thru 10]

- Durable suede and textile upper with 400G PrimaLoft® Gold insulation
- Drawstring closure provides easy entry and keeps the elements out
- Danner® Dry waterproof protection
- Cushioning open-cell OrthoLite® footbed
- Danner® Plyolite® rubberized EVA midsole offers lasting support and rebound
- Vibram® Nisqually Arctic Grip outsole with Arctic Grip AT technology offers superior traction in wet, icy conditions
- **Available in seasonal colors. See pg. 51**

SEASONAL

ADRIKA



30136

DANNER® DRY OrthoLite® **PLYOLITE**

STYLE #	HEIGHT	COLOR / PATTERN	WATERPROOF	INSULATION	WEIGHT
30136	5"	Macaroon/Pyrite	✓	-	29 oz

SIZES

LAST DPDX

M: 5-11 [½ thru 10]

- Durable nubuck upper
- Danner® Dry waterproof protection
- Two lace options
- Cushioning open-cell OrthoLite® footbed
- Danner® Plyolite® EVA midsole offers lasting support and rebound
- Danner® Adrika outsole with multi-direction lugs

SEASONAL

JAG



37379

DANNER® DRY OrthoLite®

STYLE #	HEIGHT	COLOR / PATTERN	WATERPROOF	INSULATION	WEIGHT
37379	4.5"	Coffee/Macaroon	✓	-	34 oz

SIZES

LAST DPDX

M: 5-11 [½ thru 10]

- Durable suede and textile upper
- Danner® Dry waterproof protection
- Two lace options
- Cushioning open-cell OrthoLite® footbed
- Lightweight, shock-absorbing EVA midsole
- Danner® Waffle rubber outsole with classic hiking tread pattern

MATERIALS

Textile 66% Recycled PET & 34% Seawool

Midsole 20% Recycled EVA

Outsole 10% Recycled rubber

SEASONAL

JAG LOFT



36947

PRIMALOFT. OrthoLite®

STYLE #	HEIGHT	COLOR / PATTERN	WATERPROOF	INSULATION	WEIGHT
36947	3"	Olive/Pyrite	-	200G	22 oz

SIZES

LAST DPDX

M: 5-10 [½ thru 10]

- Durable suede and textile upper with 200G PrimaLoft® Gold insulation
- Collapsible heel for versatile wear and easy on/off
- Fleece-lined interior for additional comfort
- Cushioning open-cell OrthoLite® footbed
- Lightweight, shock-absorbing EVA midsole made with 20% recycled material
- Danner® Waffle outsole with FrostTrekker rubber compound for traction in cold weather

SEASONAL

CLOUD CAP



38526

PRIMALOFT. DANNER® DRY OrthoLite® **PLYOLITE**  **ARCTIC GRIP**

STYLE #	HEIGHT	COLOR / PATTERN	WATERPROOF	INSULATION	WEIGHT
38526	7"	Roasted Pecan/Apricot	✓	400G	31 oz

SIZES

LAST DPDX

M: 5.5-10 [½ thru 10]

- Durable suede and textile upper with 400G PrimaLoft® Gold insulation
- Drawstring closure provides easy entry and keeps the elements out
- Danner® Dry waterproof protection
- Cushioning open-cell OrthoLite® footbed
- Danner® Plyolite® rubberized EVA midsole offers lasting support and rebound
- Vibram® Nisqually Arctic Grip outsole with Arctic Grip AT technology offers superior traction in wet, icy conditions



MEN'S WORK

LEAD TIME



STYLE #	HEIGHT	COLOR / PATTERN	WATERPROOF	INSULATION	SAFETY	WEIGHT
12400	3"	Brown	-	-	NMT/EH	35 oz
12401	3"	Black	-	-	NMT/EH	35 oz

SIZES AVAILABLE IN WOMEN'S

LAST 828

D: 7-14 [½ thru 12]; EE: 8-14 [½ thru 12]

- Durable synthetic and textile upper
- Quick-drying, moisture-wicking, breathable mesh lining
- Updated EXO Heel System features lightweight TPU to provide maximum support and comfort with a reinforced external heel counter
- Lightweight EVA footbed offers cushioning comfort
- Shock-absorbing EVA midsole
- Nylon shank
- Vibram® Lead Time non-marking, oil-and-slip-resistant rubber outsole offers versatile traction from indoor to outdoor environments
- Non-Metallic toe meets or exceeds ASTM F2413-18 I/75 C/75 EH

RUN TIME



Ortholite® **PLYOLITE**

STYLE #	HEIGHT	COLOR / PATTERN	WATERPROOF	INSULATION	SAFETY	WEIGHT
12371	3"	Brown	-	-	NMT/EH	32 oz
12372	3"	Black	-	-	NMT/ESD	32 oz
12376	3"	Dark Shadow	-	-	NMT/EH	32 oz

SIZES

LAST DPDX2

D: 8-14 [½ thru 12]; EE: 9-13 [½ thru 12]

- Durable and lightweight, no-sew textile upper
- Breathable mesh lining
- Cushioning open-cell OrthoLite® footbed
- Danner® Plyolite® EVA midsole offers lasting support and rebound
- Nylon shank
- Danner® Run Time oil-and-slip-resistant rubber outsole offers superior traction and durability
- Non-metallic toe meets or exceeds ASTM F2413-18 I/75 C/75 EH
- Non-metallic toe meets or exceeds ASTM F2413-18 I/75 C/75 SD
- Electrostatic Dissipative (ESD) construction reduces excess static electricity

RUN TIME EVO



12310

Ortholite® **PLYOLITE**

STYLE #	HEIGHT	COLOR / PATTERN	WATERPROOF	INSULATION	SAFETY	WEIGHT
12310	3"	Black	-	-	NMT/EH	32 oz

SIZES AVAILABLE IN WOMEN'S

LAST DPDX2


D: 7-16 [½ thru 12]; EE: 8-15 [½ thru 12]

- Durable PU-coated synthetic upper
- Breathable mesh lining
- Cushioning open-cell OrthoLite® footbed
- Danner® Plyolite® EVA midsole offers lasting support and rebound
- Nylon shank
- Danner® Run Time oil-and-slip-resistant rubber outsole offers superior traction and durability
- Non-metallic toe meets or exceeds ASTM F2413-18 I/75 C/75 EH

STRONGHOLD



16722, 16723

DANNER® DRY Ortholite® 

STYLE #	HEIGHT	COLOR / PATTERN	WATERPROOF	INSULATION	SAFETY	WEIGHT
16722	6"	Dark Brown	✓	-	EH	43 oz
16723	6"	Dark Brown	✓	-	NMT/EH	51 oz

SIZES AVAILABLE IN WOMEN'S

LAST DPDX2

D: 8-14 [½ thru 12]; EE: 9-13 [½ thru 12]

- Durable, waterproof full-grain leather upper
- Danner® Dry waterproof protection
- Cushioning open-cell OrthoLite® footbed
- Vibram® SPE midsole for maximum rebound, comfort and support
- Nylon shank
- Custom Vibram® Stronghold outsole is oil-and-slip-resistant and offers traction on wet and dry surfaces with a 90° heel
- Non-metallic toe meets or exceeds ASTM F2413-18 I/75 C/75 EH
- Electrical hazard protection ASTM F2892-18 EH

RIVERSIDE



15343



15340



15341



15342



15344



15346

DANNER® DRY

- Durable leather and textile upper
- Rubber rand provides added durability and abrasion-resistance in high-wear areas
- Danner® Dry waterproof protection or breathable mesh lining options
- Lightweight EVA footbed offers cushioning comfort
- Shock-absorbing EVA midsole
- Nylon shank
- Danner® Riverside oil-and-slip-resistant rubber outsole offers confident traction for indoor and outdoor work environments
- Steel toe meets or exceeds ASTM F2413-18 I/75 C/75 EH
- Electrical hazard protection ASTM F2892-18

STYLE #	HEIGHT	COLOR / PATTERN	WATERPROOF	INSULATION	SAFETY	WEIGHT
15340	4.5"	Brown/Green	✓	-	ST/EH	46 oz
15341	4.5"	Gray/Orange	✓	-	EH	39 oz
15342	4.5"	Gray/Blue	✓	-	ST/EH	46 oz
15343	3"	Brown/Green	✓	-	EH	34 oz
15344	3"	Black	✓	-	ST/EH	38 oz
15346	3"	Brown/Orange	-	-	ST/EH	38 oz

SIZES AVAILABLE IN WOMEN'S

LAST DPDX

15340, 15341, 15342 D: 7-16 [½ thru 12]; EE: 8-15 [½ thru 12]

15343, 15344, 15346 D: 7-16 [½ thru 12]; EE: 7-15 [½ thru 12]

CEDAR RIVER



NEW 14305, 14306



14300, 14301



14302, 14303

DANNER® DRY

STYLE #	HEIGHT	COLOR / PATTERN	WATERPROOF	INSULATION	SAFETY	WEIGHT
14300	6"	Brown	✓	-	EH	59 oz
14301	6"	Brown	✓	-	AL/EH	64 oz
14302	8"	Brown	✓	-	EH	64 oz
14303	8"	Brown	✓	-	AL/EH	69 oz
14305	8"	Dark Brown	✓	-	EH	64 oz
14306	8"	Dark Brown	✓	-	AL/EH	69 oz

SIZES AVAILABLE IN WOMEN'S

LAST 503

D: 7-15 [½ thru 12]; EE: 7-14 [½ thru 12]

- Durable all-leather upper
- Danner® Dry waterproof protection
- Moc Toe design with contrasting stitch
- Padded collar for additional comfort
- Cushioning PU footbed
- Stable, long-lasting Goodyear welt construction
- Danner® Cedar River non-marking, oil-and-slip-resistant rubber outsole offers confident traction and all-day comfort on hard surfaces
- Aluminum toe meets or exceeds ASTM F2413-18 I/75 C/75 EH
- Electrical hazard protection ASTM F2892-18

NEW CALIPER WELLINGTON



19490, 19491

DANNER® DRY

STYLE #	HEIGHT	COLOR / PATTERN	WATERPROOF	INSULATION	SAFETY	WEIGHT
19490	10"	Brown	✓	-	EH	54 oz
19491	10"	Brown	✓	-	AL/EH	58 oz

SIZES

LAST DPDX

D: 7-15 [½ thru 12]; EE: 7-14 [½ thru 12]

- Durable, full-grain leather upper
- Danner® Dry waterproof protection and breathable mesh lining options
- Danner® Dual Layer Comfort footbed with memory foam and PU provides instant and long-lasting comfort
- Memory foam strobol sock offers additional cushioning underfoot
- PU midsole offers shock absorption and lasting rebound
- Fiberglass shank
- Danner® Caliper oil-and-slip-resistant rubber outsole offers versatile indoor and outdoor traction with a low-profile 90° heel
- Aluminum toe meets or exceeds ASTM F2413-18 I/75 C/75 EH
- Electrical hazard protection ASTM F2892-18 EH

CALIPER



19457 **NEW** 19458, 19459



19450



19451



19452, 19453



19454

DANNER® DRY *Thinsulate Ultra* INSULATION // DLC

- Durable, full-grain leather upper
- Danner® Dry waterproof protection and breathable mesh lining options
- Select styles available with Thinsulate™ Ultra Insulation
- Danner® Dual Layer Comfort footbed with memory foam and PU provides instant and long-lasting comfort
- Memory foam strobel sock offers additional cushioning underfoot
- PU midsole offers shock absorption and lasting rebound
- Fiberglass shank
- Danner® Caliper oil-and-slip-resistant rubber outsole offers versatile indoor and outdoor traction with a low-profile 90° heel
- Aluminum toe meets or exceeds ASTM F2413-18 I/75 C/75 EH
- Electrical hazard protection ASTM F2892-18 EH

STYLE #	HEIGHT	COLOR / PATTERN	WATERPROOF	INSULATION	SAFETY	WEIGHT
19450	3"	Brown	-	-	AL/EH	48 oz
19451	3"	Black	-	-	AL/EH	48 oz
19452	6"	Brown	✓	-	EH	48 oz
19453	6"	Brown	✓	-	AL/EH	54 oz
19454	6"	Black	✓	-	AL/EH	54 oz
19457	8"	Brown	✓	-	EH	54 oz
19458	8"	Brown	✓	400G	EH	56 oz
19459	8"	Brown	✓	-	AL/EH	59 oz

SIZES AVAILABLE IN WOMEN'S

LAST DPDX

D: 7-15 [½ thru 12]; EE: 7-14 [½ thru 12]

STEEL YARD



12531, 12536



12532



12534, 12535



12537, 12538

DANNER® DRY *Thinsulate Ultra* INSULATION // DCS

- Durable, full-grain leather upper
- Danner® Dry waterproof protection or breathable mesh lining options
- Select styles available with Thinsulate™ Ultra Insulation
- Danner® Comfort System platform offers superior comfort, support and durability
- PU midsole with shock absorption
- Steel shank
- Stable, long-lasting Goodyear welt construction
- Danner® Steel Yard oil-and-slip-resistant outsole for stability and support
- Danner® Steel Yard Wedge oil-and-slip-resistant TPU outsole
- Steel toe meets or exceeds ASTM F2413-18 I/75 C/75 EH
- Steel toe and metatarsal meets or exceeds ASTM F2413-18 I/75 C/75 MT EH
- Electrical hazard protection ASTM F2892-18 EH

STYLE #	HEIGHT	COLOR / PATTERN	WATERPROOF	INSULATION	SAFETY	WEIGHT
12531	6"	Brown	✓	-	ST/EH	70 oz
12532	6"	Brown	-	-	MET/ST/EH	72 oz
12534	8"	Brown	✓	-	ST/EH	75 oz
12535	8"	Brown	✓	400G	ST/EH	78 oz
12536	6"	Brown	✓	-	EH	64 oz
12537	6"	Brown	-	-	ST/EH	69 oz
12538	6"	Brown	✓	-	ST/EH	72 oz

SIZES

LAST 610

D: 7-16 [1/2 thru 12]; EE: 8-15 [1/2 thru 12]

CRAFTER



12433, 12435

DANNER® DRY // DCS

STYLE #	HEIGHT	COLOR / PATTERN	WATERPROOF	INSULATION	SAFETY	WEIGHT
12433	6"	Brown	✓	-	EH	53 oz
12435	6"	Brown	✓	-	NMT/EH	56 oz

SIZES

LAST DCP1-H

D: 7-16 [½ thru 12]; EE: 8-15 [½ thru 12]

- Durable, waterproof, oiled nubuck leather upper
- Anatomical design and broader toe box for a more responsive fit
- Danner® Dry waterproof protection
- Patented dual-density footbed for cushioning and underfoot air circulation, with an Airthotic® heel clip for support
- Nylon shank
- Danner® Comfort System platform offers superior comfort, support and durability
- Danner® Crafter oil-and-slip-resistant outsole offers superior traction with a low-profile 90° heel
- Non-metallic toe meets or exceeds ASTM F2413-18 I/75 C/75 EH
- Electrical hazard protection ASTM F2892-18 EH

CRAFTER ROMEO



12441

// DCS

STYLE #	HEIGHT	COLOR / PATTERN	WATERPROOF	INSULATION	SAFETY	WEIGHT
12441	3"	Brown	-	-	EH	42 oz

SIZES

LAST DCP3-H

D: 8-14 [½ thru 12]; EE: 9-13 [½ thru 12]

- Durable, waterproof, oiled nubuck leather upper
- Anatomical design and broader toe box for a more responsive fit
- Breathable, moisture-wicking mesh lining
- Patented dual-density footbed for cushioning and underfoot air circulation, with an Airthotic® heel clip for support
- Nylon shank
- Danner® Comfort System platform offers superior comfort, support and durability
- Danner® Crafter oil-and-slip-resistant outsole offers superior traction with a low-profile 90° heel
- Electrical hazard protection ASTM F2892-18 EH

DANNER ROMEO



44030

// STITCHDOWN

STYLE #	HEIGHT	COLOR / PATTERN	WATERPROOF	INSULATION	SAFETY	WEIGHT
44030	3"	Brown	-	-	EH	40 oz

SIZES

LAST C2-919

D: 7-15 [½ thru 12]; EE: 7-14 [½ thru 12]

- Durable full-grain leather upper
- Breathable mesh lining
- Cushioning PU footbed
- Nylon shank
- Handcrafted, stitchdown construction
- Danner® Romeo oil-and-slip-resistant PU outsole
- Electrical hazard protection ASTM F2892-18 EH

FIELD RANGER



15160, 15161

DANNER® DRY // TRAILGUARD

STYLE #	HEIGHT	COLOR / PATTERN	WATERPROOF	INSULATION	SAFETY	WEIGHT
15160	6"	Brown	✓	-	EH	47 oz
15161	6"	Brown	✓	-	NMT/EH	52 oz

SIZES

LAST DPDX2

D: 7-16 [½ thru 12]; EE: 8-15 [½ thru 12]

- Durable leather and textile upper
- Danner® Dry waterproof protection
- PU-coated leather on toe and heel provide increased durability and abrasion resistance
- Cushioning PU footbed
- Nylon shank
- TRAILGUARD platform offers lightweight, athletic performance
- Danner® Field Ranger oil-and-slip-resistant outsole offers versatile traction with a 90° heel
- Non-metallic toe meets or exceeds ASTM F2413-18 I/75 C/75 EH
- Electrical hazard protection ASTM F2892-18 EH

CRUCIAL



15862, 15863

15861

GORE-TEX PRODUCTS // TFN 

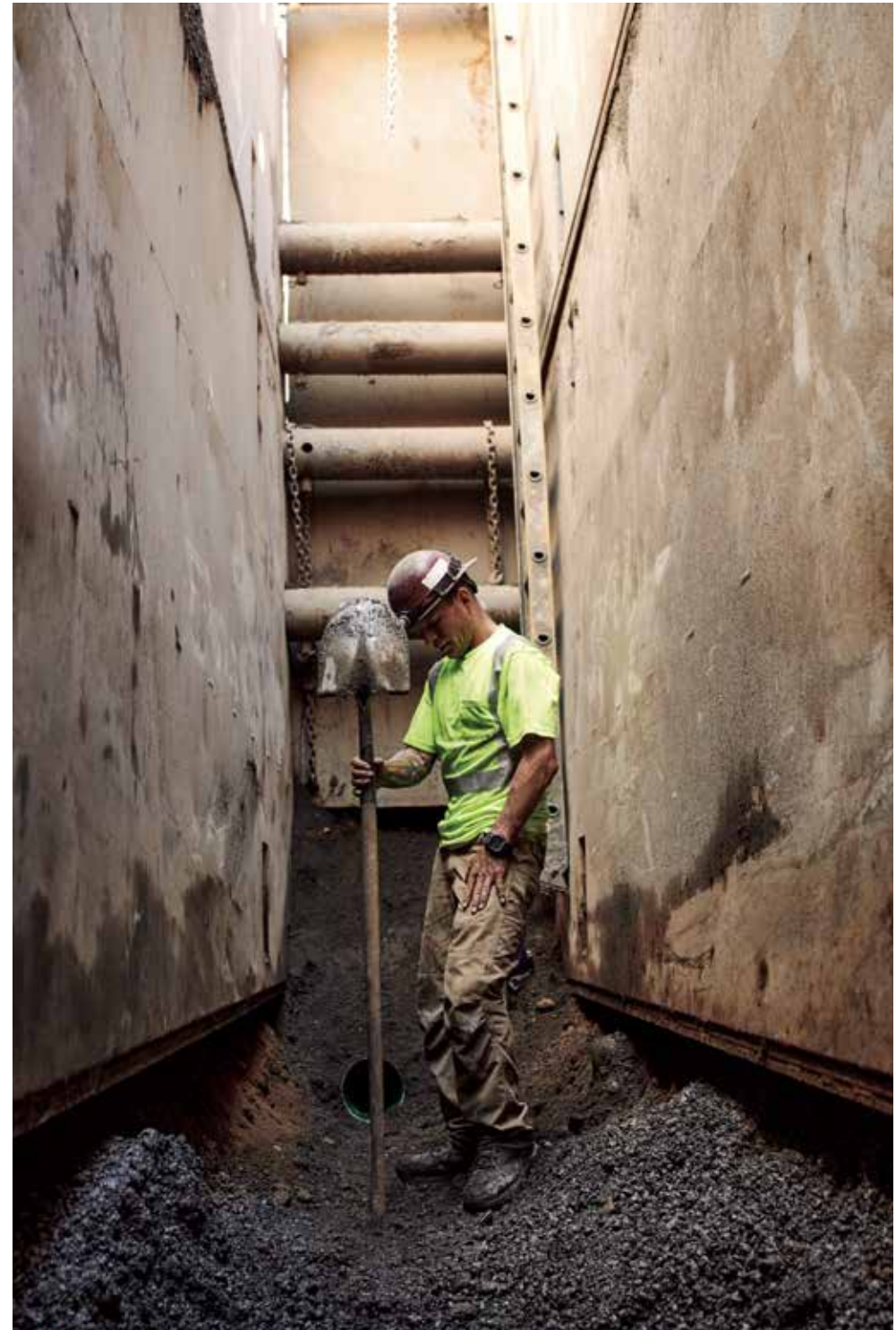
STYLE #	HEIGHT	COLOR / PATTERN	WATERPROOF	INSULATION	SAFETY	WEIGHT
15862	8"	Brown	✓	-	EH	61 oz
15863	8"	Brown	✓	-	NMT/EH	65 oz
15861	6"	Brown	✓	-	NMT/EH	59 oz

SIZES

LAST 851

D: 7-14 [1/2 thru 12]; EE: 8-13 [1/2 thru 12]

- Durable, waterproof full-grain leather upper
- GORE-TEX waterproof breathable lining
- Rugged hardware for secure fit and long lasting performance
- Cushioning PU footbed
- TERRA FORCE® NEXT™ platform combines an internal and external shank system to provide arch support and torsion control
- Vibram® SPE midsole for maximum rebound, comfort and support
- Bi-Fit stability board for underfoot comfort, reduced weight and added forefoot flex
- Vibram® Crucial non-marking, oil-and-slip-resistant outsole provides superior traction in all conditions with a low-profile 90° heel
- Non-metallic toe meets or exceeds ASTM F2413-18 I/75 C/75 EH
- Electrical hazard protection ASTM F2892-18 EH



VICIOUS



NEW 13885, 13886



13858, 13860



13862, 13864



13866, 13868, 13874



NEW 13879, 13880



NEW 13881, 13882

GORE-TEX PRODUCTS **Thinsulate Ultra** INSULATION // **TRAILGUARD** 

- Durable waterproof leather upper with abrasion-resistant heel cap
- GORE-TEX waterproof breathable lining or moisture wicking mesh lining options
- Select styles available with Thinsulate™ Ultra Insulation
- Cushioning PU footbed
- Dual-density EVA cushioning and shock absorbing midsole offers added durability on the outside edges with cushioning on the inside for more comfort and support underfoot
- Nylon shank
- TRAILGUARD platform offers lightweight, athletic performance
- Vibram® Vicious oil-and-slip-resistant outsole offers superior indoor and outdoor traction with a low-profile 90° heel
- Non-metallic toe and metatarsal meets or exceeds ASTM F2413-18 I/75 C/75 MT EH
- Non-metallic toe meets or exceeds ASTM F2413-18 I/75 C/75 EH
- Electrical hazard protection ASTM F2892-18 EH

STYLE #	HEIGHT	COLOR / PATTERN	WATERPROOF	INSULATION	SAFETY	WEIGHT
13858	4.5"	Brown/Orange	✓	-	EH	46 oz
13860	4.5"	Brown/Orange	✓	-	NMT/EH	52 oz
13862	4.5"	Black/Blue	✓	-	EH	46 oz
13864	4.5"	Black/Blue	✓	-	NMT/EH	52 oz
13881	4.5"	Brown/Red	✓	-	EH	46 oz
13882	4.5"	Brown/Red	✓	-	NMT/EH	52 oz
13885	4.5"	Tan/Black	✓	-	EH	46 oz
13886	4.5"	Tan/Black	✓	-	NMT/EH	52 oz
13879	6"	Brown/Orange	✓	-	NMT/EH	55 oz
13880	6"	Brown/Orange	✓	-	NMT/MET/EH	58 oz
13866	8"	Brown	✓	-	EH	53 oz
13868	8"	Brown	✓	-	NMT/EH	59 oz
13874	8"	Brown	✓	400G	NMT/EH	66 oz

SIZES AVAILABLE IN WOMEN'S

LAST DLE-01

13858, 13860, 13879, 13880, 13881, 13882, 13885, 13886 D: 7-16 [½ thru 12]; EE: 8-15 [½ thru 12]

13862, 13864, 13866, 13868, 13874 D: 7-14 [½ thru 12]; EE: 8-13 [½ thru 12]

BULL RUN MOC TOE



15563, 15564

15568, 15569

OrthoLite® // *STITCHDOWN*



STYLE #	HEIGHT	COLOR / PATTERN	WATERPROOF	INSULATION	SAFETY	WEIGHT
15563	6"	Brown	-	-	EH	51 oz
15564	6"	Brown	-	-	ST/EH	56 oz
15568	6"	Black	-	-	EH	51 oz
15569	6"	Black	-	-	ST/EH	56 oz

SIZES AVAILABLE IN WOMEN'S

LAST 503 [15563, 15568]; 516 [15564, 15569]

D: 7-15 [½ thru 12]; EE: 7-14 [½ thru 12]

▪ **Made in the USA with imported components**

- Durable, oiled, full-grain leather upper
- Moc toe design with contrasting stitch
- Cushioning open-cell OrthoLite® footbed
- Steel shank
- Handcrafted, stitchdown construction for strength and stability
- Danner® Wedge non-marking, oil-and-slip-resistant outsole offers superior traction
- Steel toe meets or exceeds ASTM F2413-18 I/75 C/75 EH
- Electrical hazard protection ASTM F2892-18 EH
- Recraftable

BULL RUN CHELSEA



15481

OrthoLite® // *STITCHDOWN*



STYLE #	HEIGHT	COLOR / PATTERN	WATERPROOF	INSULATION	SAFETY	WEIGHT
15481	6"	Brown	-	-	EH	50 oz

SIZES AVAILABLE IN WOMEN'S

LAST 503

D: 7-15 [½ thru 12]; EE: 7-14 [½ thru 12]

▪ **Made in the USA with imported components**

- Durable, oiled, full-grain leather upper
- Chelsea construction provides easy on/off
- Cushioning open-cell OrthoLite® footbed
- Steel Shank
- Handcrafted, stitchdown construction for strength and stability
- Danner® Wedge non-marking, oil-and-slip-resistant outsole offers superior traction
- Electrical hazard protection ASTM F2892-18 EH
- Recraftable

BULL RUN



15556

15552

Ortholite® //STITCHDOWN



STYLE #	HEIGHT	COLOR / PATTERN	WATERPROOF	INSULATION	SAFETY	WEIGHT
15552	6"	Brown	-	-	EH	67 oz
15556	8"	Brown	-	-	EH	74 oz

SIZES

LAST 503

D: 7-15 [½ thru 12]; EE: 7-14 [½ thru 12]

▪ Made in the USA with imported components

- Durable, oiled, full-grain leather upper
- Cushioning open-cell OrthoLite® footbed
- Steel shank
- Handcrafted, stitchdown construction for strength and stability
- Danner® Wedge non-marking, oil-and-slip-resistant outsole offers superior traction
- Electrical hazard protection ASTM F2892-18 EH
- Recraftable

DANNER® LOGGER



15439

15431

DANNER® DRY Ortholite® //STITCHDOWN



STYLE #	HEIGHT	COLOR / PATTERN	WATERPROOF	INSULATION	SAFETY	WEIGHT
15431	8"	Black	✓	-	EH	69 oz
15439	8"	Brown	✓	-	EH	70 oz

SIZES AVAILABLE IN EXTENDED SIZES

LAST 607

D: 8-14 [½ thru 12]; EE: 9-13 [½ thru 12]

- Durable, waterproof, oiled nubuck leather upper
- Danner® Dry waterproof protection
- Cushioning open-cell OrthoLite® footbed
- Bi-Fit stability board for underfoot comfort, reduced weight and added forefoot flex
- Handcrafted, stitchdown construction for strength and stability
- Vibram® 360° Logger outsole offers substantial edging and superior traction
- Electrical hazard protection ASTM F2892-18 EH



17309, 17310, 17311



17305, 17307



17315, 17317, 17319, 17321

GORE-TEX PRODUCTS OrthoLite Thinsulate Ultra INSULATION // STITCHDOWN Vibram FIRE & ICE



- **Made in the USA with imported components**
- Durable, waterproof oiled nubuck or full-grain leather upper
- Triple-stitched for ultimate durability and protection
- GORE-TEX waterproof breathable lining
- Select styles available with Thinsulate™ Ultra Insulation
- Rugged hardware for secure fit and long-lasting performance
- Cushioning open-cell OrthoLite® footbed
- Fiberglass shank or steel shank
- Handcrafted, stitchdown construction for strength and stability
- Vibram® Quarry oil- and slip-resistant outsole offers superior traction and debris release
- Insulated styles feature Vibram® Quarry Fire & Ice oil- and slip-resistant outsole for superior traction in extreme hot and cold environments
- Alloy toe and metatarsal meets or exceeds ASTM F2413-18 I/75 C/75 MT EH
- Both alloy and non-metallic toe meet or exceed ASTM F2413-18 I/75 C/75 EH
- Electrical hazard protection ASTM F2892-18 EH
- Recraftable

STYLE #	HEIGHT	COLOR / PATTERN	WATERPROOF	INSULATION	SAFETY	WEIGHT
17305	8"	Brown	✓	-	EH	70 oz
17307	8"	Brown	✓	-	AT/EH	77 oz
17309	8"	Black	✓	-	EH	70 oz
17310	8"	Black	✓	-	MET/AT/EH	80 oz
17311	8"	Black	✓	-	AT/EH	77 oz
17315	8"	Distressed Brown	✓	-	EH	70 oz
17317	8"	Distressed Brown	✓	-	AT/EH	77 oz
17319	8"	Distressed Brown	✓	400G	EH	83 oz
17321	8"	Distressed Brown	✓	400G	NMT/EH	85 oz

SIZES AVAILABLE IN WOMEN'S

LAST 610

17305, 17307, 17309, 17311, 17315, 17317	D: 7-16 [½ thru 12]; EE: 7-15 [½ thru 12]
17310	D: 7-16 [½ thru 12]; EE: 8-15 [½ thru 12]
17319, 17321	D: 7-15 [½ thru 12]; EE: 7-14 [½ thru 12]

POWER FOREMAN



15200, 15210

GORE-TEX PRODUCTS // STITCHDOWN 



STYLE #	HEIGHT	COLOR / PATTERN	WATERPROOF	INSULATION	SAFETY	WEIGHT
15200	8"	Brown	✓	-	EH	77 oz
15210	8"	Brown	✓	-	NMT/EH	86 oz

SIZES

LAST 610 [15200]; 516 [15210]

D: 7-14 [½ thru 12]; EE: 7-13 [½ thru 12]

▪ Made in the USA

- Durable, waterproof full-grain leather upper
- Triple-stitched for ultimate durability and protection
- Additional 7 oz leather layer in toe for abrasion resistance
- GORE-TEX waterproof breathable lining
- Cushioning, molded PU footbed
- Fiberglass shank
- Handcrafted, stitchdown construction for strength and stability
- Vibram® 4014 Christy outsole offers superior traction on steep terrain
- Non-metallic toe meets or exceeds ASTM F2413-18 I/75 C/75 EH
- Electrical hazard protection ASTM F2892-18 EH
- Recraftable

RAIN FOREST



10600

14100

GORE-TEX PRODUCTS // STITCHDOWN 



STYLE #	HEIGHT	COLOR / PATTERN	WATERPROOF	INSULATION	SAFETY	WEIGHT
10600	8"	Brown	✓	-	EH	74 oz
14100	8"	Black	✓	-	EH	74 oz

SIZES AVAILABLE IN WOMEN'S

LAST 650

D: 7-14 [½ thru 12]; EE: 7-13 [½ thru 12]

▪ Made in the USA

- Durable, waterproof, full-grain leather upper
- Triple-stitched for ultimate durability and protection
- GORE-TEX waterproof breathable lining
- Danner® Airthotic® heel cradle and arch support
- Fiberglass shank
- Handcrafted, stitchdown construction for strength and stability
- Vibram® 132 Montagna angled outsole offers superior traction on steep terrain
- Electrical hazard protection ASTM F2892-18 EH
- Recraftable

SUPER RAIN FOREST



11500, 11550, 11700

GORE-TEX[®] PRODUCTS Thinsulate[™] INSULATION // STITCHDOWN  

STYLE #	HEIGHT	COLOR / PATTERN	WATERPROOF	INSULATION	SAFETY	WEIGHT
11500	8"	Black	✓	-	EH	80 oz
11550	8"	Black	✓	-	NMT/EH	86 oz
11700	8"	Black	✓	200G	EH	86 oz

SIZES **LAST** 610 [11500, 11700]; 516 [11550]

D: 7-14 [½ thru 12]; EE: 7-13 [½ thru 12]

- **Made in the USA**
- Durable, waterproof, full-grain leather upper offers alkali, lime and barnyard chemical-resistance
- Triple-stitched for ultimate durability and protection
- Additional 7 oz leather layer in toe for abrasion resistance
- GORE-TEX waterproof breathable lining
- Select styles available with Thinsulate™ Ultra Insulation
- Cushioning, molded PU footbed
- Fiberglass shank
- Handcrafted, stitchdown construction for strength and stability
- Vibram® 132 Montagna angled outsole offers superior traction on steep terrain
- Non-metallic toe meets or exceeds ASTM F2413-18 I/75 C/75 EH
- Electrical hazard protection ASTM F2892-18 EH
- Recraftable

FLASHPOINT II



18102

// STITCHDOWN   

STYLE #	HEIGHT	COLOR / PATTERN	WATERPROOF	INSULATION	SAFETY	WEIGHT
18102	10"	Black	-	-	EH	101 oz

SIZES AVAILABLE IN WOMEN'S **LAST** 74

D: 6-15 [½ thru 12]; EE: 6-15 [½ thru 12]; EEEE: 6-12

- **Made in the USA with domestic and imported components**
- Fire, puncture and water-resistant 8 oz full-grain leather upper
- Triple-stitched with Nomex® fire-resistant thread for ultimate durability and protection
- Additional 7 oz leather layer in toe for abrasion resistance
- Cushioning PU footbed
- Steel shank
- Handcrafted, stitchdown construction for strength and stability
- Vibram® 360° Logger Fire & Ice outsole offers heat resistance and superior edging and traction on rugged terrain
- Electrical hazard protection ASTM F2892-18 EH
- NFPA 1977: 2016 edition certified
- Recraftable

WILDLAND TACTICAL FIREFIGHTER



18054

18050

Ortholite®



STYLE #	HEIGHT	COLOR / PATTERN	WATERPROOF	INSULATION	SAFETY	WEIGHT
18050	8"	Black	-	-	EH	80 oz
18054	8"	Black Smooth Out	-	-	EH	80 oz

SIZES AVAILABLE IN EXTENDED SIZES

LAST 851

B: 5-13 [1/2 thru 12]; **D:** 6-15 [1/2 thru 12]; **EE:** 6-15 [1/2 thru 12]

- **Made in the USA with domestic and imported components**
- Durable, fire-resistant full-grain or rough-out leather upper
- Mountaineering-inspired, lightweight, athletic design
- Breathable, moisture-wicking mesh lining
- Cushioning open-cell OrthoLite® footbed
- Full-length polypropylene board with integrated steel shank for optimal rigidity and stability underfoot
- Handcrafted, opanka-stitch construction for strength and stability
- Vibram® S587 Fire & Ice oil-and-slip-resistant outsole offers heat resistance and traction over high-angle terrain
- Electrical hazard protection ASTM F2892-18 EH
- NFPA 1977: 2016 edition certified

MODERN FIREFIGHTER



18051

DANNER® DRY Ortholite®



STYLE #	HEIGHT	COLOR / PATTERN	WATERPROOF	INSULATION	SAFETY	WEIGHT
18051	8"	Black	✓	-	NMT/EH	80 oz

SIZES

LAST 851

B: 5-13; **D:** 6-15 [1/2 thru 12]; **EE:** 6-15 [1/2 thru 12]

- Durable, fire-resistant, polishable full-grain leather upper
- Mountaineering-inspired, lightweight, athletic design
- Rubber toe cap for added durability
- Replaceable front entry zipper
- Danner® Dry waterproof protection
- Cushioning open-cell Ortholite® footbed
- Vibram® S587 Fire & Ice oil-and-slip-resistant outsole offers heat resistance and traction over high-angle terrain
- Non-metallic toe meets or exceeds ASTM F2413-18 I/75 C/75 EH
- Modern Firefighter features a Danner® Dry waterproof liner, which has been tested for body fluid borne pathogen resistance and meets or exceeds ASTM F1671-13 standards
- NFPA 1977: 2016 edition certified
- NFPA 1999: EMS Certified
- Flexible puncture proof midsole board is CSA certified to -2195



WOMEN'S WORK



LEAD TIME



STYLE #	HEIGHT	COLOR / PATTERN	WATERPROOF	INSULATION	SAFETY	WEIGHT
12402	3"	Black	-	-	NMT/EH	27 oz
12403	3"	Turquoise	-	-	NMT/EH	27 oz

SIZES

LAST 828

M: 5-11 [1/2 thru 10]

- Durable synthetic and textile upper
- Quick-drying, moisture-wicking, breathable mesh lining
- Updated EXO Heel System features lightweight TPU to provide maximum support and comfort with a reinforced external heel counter
- Lightweight EVA footbed offers cushioning comfort
- Shock-absorbing EVA midsole
- Nylon shank
- Vibram® Lead Time non-marking, oil-and-slip-resistant rubber outsole offers versatile traction from indoor to outdoor environments
- Non-Metallic toe meets or exceeds ASTM F2413-18 I/75 C/75 EH

RIVERSIDE



DANNER® DRY

STYLE #	HEIGHT	COLOR / PATTERN	WATERPROOF	INSULATION	SAFETY	WEIGHT
15347	4.5"	Gray/Orange	✓	-	ST/EH	35 oz

SIZES

LAST DPDX

M: 5-11 [1/2 thru 10]

- Durable leather and textile upper
- Rubber rand provides added durability and abrasion-resistance in high-wear areas
- Danner® Dry waterproof protection or breathable mesh lining options
- Lightweight EVA footbed offers cushioning comfort
- Shock-absorbing EVA midsole
- Nylon shank
- Danner® Riverside oil-and-slip-resistant rubber outsole offers confident traction for indoor and outdoor work environments
- Steel toe meets or exceeds ASTM F2413-18 I/75 C/75 EH
- Electrical hazard protection ASTM F2892-18

RUN TIME



12377



12373



12374

Ortholite® **PLYOLITE**

STYLE #	HEIGHT	COLOR / PATTERN	WATERPROOF	INSULATION	SAFETY	WEIGHT
12373	3"	Teal	-	-	NMT/EH	26 oz
12374	3"	Black	-	-	NMT/ESD	26 oz
12377	3"	Dark Shadow	-	-	NMT/EH	26 oz

SIZES

LAST DPDX2

M: 5-11 [½ thru 10]

- Durable and lightweight, no-sew textile upper
- Breathable mesh lining
- Cushioning open-cell OrthoLite® footbed
- Danner® Plyolite® EVA midsole offers lasting support and rebound
- Nylon shank
- Danner® Run Time oil-and-slip-resistant rubber outsole offers superior traction and durability
- Non-metallic toe meets or exceeds ASTM F2413-18 I/75 C/75 EH
- Non-metallic toe meets or exceeds ASTM F2413-18 M I/75 C/75 SD
- Electrostatic Dissipative [ESD] construction reduces excess static electricity

RUN TIME EVO



12311

Ortholite® **PLYOLITE**

STYLE #	HEIGHT	COLOR / PATTERN	WATERPROOF	INSULATION	SAFETY	WEIGHT
12311	3"	Black	-	-	NMT/EH	26 oz

SIZES

LAST DPDX2

M: 5-11 [½ thru 10]

- Durable PU-coated synthetic upper
- Breathable mesh lining
- Cushioning open-cell OrthoLite® footbed
- Danner® Plyolite® EVA midsole offers lasting support and rebound
- Nylon shank
- Danner® Run Time oil-and-slip-resistant rubber outsole offers superior traction and durability
- Non-metallic toe meets or exceeds ASTM F2413-18 I/75 C/75 EH

NEW CEDAR RIVER



14307, 14308

DANNER® DRY

STYLE #	HEIGHT	COLOR / PATTERN	WATERPROOF	INSULATION	SAFETY	WEIGHT
14307	6"	Brown	✓	-	EH	48 oz
14308	6"	Brown	✓	-	AL/EH	51 oz

SIZES

LAST 329

M: 5-11 [½ thru 10]

- Durable all-leather upper
- Danner® Dry waterproof protection
- Moc Toe design with contrasting stitch
- Padded collar for additional comfort
- Cushioning PU footbed
- Stable, long-lasting Goodyear welt construction
- Danner® Cedar River non-marking, oil-and-slip-resistant rubber outsole offers confident traction and all-day comfort on hard surfaces
- Aluminum toe meets or exceeds ASTM F2413-18 I/75 C/75 EH
- Electrical hazard protection ASTM F2892-18

VICIOUS



NEW 13883, 13884

13853

GORE-TEX® // TRAILGUARD

STYLE #	HEIGHT	COLOR / PATTERN	WATERPROOF	INSULATION	SAFETY	WEIGHT
13853	4"	Brown/Green	✓	-	NMT/EH	40 oz
13883	4"	Brown/Orange	✓	-	EH	38 oz
13884	4"	Brown/Orange	✓	-	NMT/EH	40 oz

SIZES

LAST DT5H

M: 5-11 [½ thru 10]

- Durable, waterproof leather upper with abrasion-resistant heel cap
- GORE-TEX waterproof breathable lining
- Cushioning PU footbed
- Dual-density EVA, cushioning and shock-absorbing midsole
- Nylon shank
- TRAILGUARD platform offers lightweight, athletic performance
- Vibram® Vicious oil-and-slip-resistant outsole offers superior indoor and outdoor traction with a low-profile 90° heel
- Non-metallic toe meets or exceeds ASTM F2413-18 I/75 C/75 EH

BULL RUN MOC TOE



15575, 15576

15587

Ortholite® // *STITCHDOWN*



STYLE #	HEIGHT	COLOR / PATTERN	WATERPROOF	INSULATION	SAFETY	WEIGHT
15575	6"	Brown	-	-	EH	42 oz
15576	6"	Brown	-	-	ST/EH	45 oz
15587	6"	Black	-	-	EH	42 oz

SIZES

LAST 329

M: 5-11 [½ thru 10]

▪ Made in the USA with imported components

- Durable, oiled, full-grain leather upper
- Moc toe design with contrasting stitch
- Cushioning open-cell OrthoLite® footbed
- Steel shank
- Handcrafted, stitchdown construction for strength and stability
- Danner® Wedge non-marking, oil-and-slip-resistant outsole offers superior traction
- Steel toe meets or exceeds ASTM F2413-18 I/75 C/75 EH
- Recraftable

BULL RUN CHELSEA



15482

Ortholite® // *STITCHDOWN*



STYLE #	HEIGHT	COLOR / PATTERN	WATERPROOF	INSULATION	SAFETY	WEIGHT
15482	6"	Brown	-	-	EH	39 oz

SIZES

LAST 329

5-11 [½ thru 10]

▪ Made in the USA with imported components

- Durable, oiled, full-grain leather upper
- Chelsea construction provides easy on/off
- Cushioning open-cell OrthoLite® footbed
- Steel Shank
- Handcrafted, stitchdown construction for strength and stability
- Danner® Wedge non-marking, oil-and-slip-resistant outsole offers superior traction
- Electrical hazard protection ASTM F2892-18 EH
- Recraftable

STRONGHOLD



16717

DANNER® DRY OrthoLite® 

STYLE #	HEIGHT	COLOR / PATTERN	WATERPROOF	INSULATION	SAFETY	WEIGHT
16717	5"	Gray	✓	-	NMT/EH	40 oz

SIZES

LAST DPDX2

M: 5-11 [1/2 thru 10]

- Durable, waterproof full-grain leather upper
- Danner® Dry waterproof protection
- Cushioning open-cell OrthoLite® footbed
- Vibram® SPE midsole for maximum rebound, comfort and support
- Nylon shank
- Custom Vibram® Stronghold oil-and-slip-resistant outsole offers traction on wet and dry surfaces with a 90° heel
- Non-metallic toe meets or exceeds ASTM F2413-18 I/75 C/75 EH
- Electrical hazard protection ASTM F2892-18 EH



CALIPER



19460

19455

DANNER® DRY // DLC

STYLE #	HEIGHT	COLOR / PATTERN	WATERPROOF	INSULATION	SAFETY	WEIGHT
19455	5"	Brown	✓	-	AL/EH	43 oz
19460	5"	Brown	✓	-	EH	43 oz

SIZES

LAST DPDX

M: 5-11 [½ thru 10], W: 5-11 [½ thru 10]

- Durable, full-grain leather upper
- Danner® Dry waterproof protection
- Danner® Dual Layer Comfort footbed with memory foam and PU provides instant and long-lasting comfort
- Memory foam strobel sock offers additional cushioning underfoot
- PU midsole offers shock absorption and lasting rebound
- Fiberglass shank
- Danner® Caliper oil-and-slip-resistant rubber outsole offers versatile indoor and outdoor traction with a low-profile 90° heel
- Aluminum safety toe meets or exceeds ASTM F2413-18 I/75 C/75 EH

QUARRY® USA



17323, 17325

GORE-TEX® OrthoLite® // STITCHDOWN 



STYLE #	HEIGHT	COLOR / PATTERN	WATERPROOF	INSULATION	SAFETY	WEIGHT
17323	7"	Black	✓	-	EH	61 oz
17325	7"	Black	✓	-	AT/EH	64 oz

SIZES

LAST 610

M: 5-11 [½ thru 10]

- **Made in the USA with imported components**
- Durable waterproof full-grain leather upper
- Triple-stitched for ultimate durability and protection
- GORE-TEX waterproof breathable lining
- Rugged hardware for secure fit and long-lasting performance
- Cushioning open-cell OrthoLite® footbed
- Fiberglass shank
- Handcrafted, stitchdown construction for strength and stability
- Vibram® Quarry oil-and-slip-resistant outsole offers superior traction and debris release
- Alloy toe meets or exceeds ASTM F2413-18 I/75 C/75 EH
- Electrical hazard protection ASTM F2892-18 EH
- Recraftable

RAIN FOREST



14100

GORE-TEX PRODUCTS // STITCHDOWN 



STYLE #	HEIGHT	COLOR / PATTERN	WATERPROOF	INSULATION	SAFETY	WEIGHT
14100	8"	Black	✓	-	EH	74 oz

SIZES AVAILABLE IN EXTENDED SIZES

LAST 650

M: 5-10 [½ thru 10]

- **Made in the USA**
- Durable full-grain leather upper
- Triple-stitched for ultimate durability and protection
- GORE-TEX waterproof breathable lining
- Danner® Airthotic® heel cradle and arch support
- Fiberglass shank
- Handcrafted, stitchdown construction for strength and stability
- Vibram® 132 Montagna angled outsole offers superior traction on steep terrain
- Electrical hazard protection ASTM F2892-18 EH
- Recraftable

FLASHPOINT II



18102

// STITCHDOWN  



STYLE #	HEIGHT	COLOR / PATTERN	WATERPROOF	INSULATION	SAFETY	WEIGHT
18102	10"	Black	-	-	EH	101 oz

SIZES

LAST 74

M: 6-11 [½ thru 11]; W: 6-11 [½ thru 11]

- **Made in the USA with domestic and imported components**
- Fire, puncture and water-resistant 8 oz full-grain leather upper
- Triple-stitched with Nomex® fire-resistant thread for ultimate durability and protection
- Additional 7 oz leather layer in toe for abrasion resistance
- Cushioning PU footbed
- Steel shank
- Handcrafted, stitchdown construction for strength and stability
- Vibram® 360° Logger Fire & Ice outsole offers heat resistance and superior edging and traction on rugged terrain
- Electrical hazard protection ASTM F2892-18 EH
- NFPA 1977: 2016 edition certified
- Recraftable



MEN'S TACTICAL

FULLBORE



DANNER® DRY   MEGAGRIP

STYLE #	HEIGHT	COLOR	WATERPROOF	INSULATION	SAFETY	WEIGHT
20511	4.5"	Black	✓	-	-	42 oz
20512	4.5"	Coyote	-	-	-	42 oz

SIZES

LAST DPDX

D: 6-15 [½ thru 12]; EE: 6-15 [½ thru 12]

- Water-resistant suede or full-grain leather and mesh upper
- Danner® Dry waterproof protection or breathable mesh lining
- Danner® Dry option has been tested for body fluid borne pathogen resistance and meets or exceeds ASTM F1671-18 standards
- Low-density PU footbed offers lightweight cushioning and lasting durability
- Vibram® SPE midsole for maximum rebound, comfort and support
- Nylon shank
- Vibram® Fuga outsole with Megagrip technology offers superior grip on wet and dry surfaces

NEW RESURGENT TACTICAL



DANNER® DRY 

STYLE #	HEIGHT	COLOR	WATERPROOF	INSULATION	SAFETY	WEIGHT
50111	8"	Black	✓	-	-	32 oz

SIZES

LAST DLE-01

D: 6-16 [½ thru 12]; EE: 6-16 [½ thru 12]

- Leather and Perspair® upper provides superior abrasion-resistance and durability in a lightweight construction
- Danner® Dry waterproof protection
- Danner® Dry liner has been tested for body fluid borne pathogen resistance and meets or exceeds ASTM F1671-18 standards
- Polishable toe
- Low-density PU footbed offers lightweight cushioning and lasting durability
- Resurge low-density EVA midsole provides superior rebound and energy return with minimal weight
- Exclusive Vibram® Resurgent slip-resistant outsole features large pentagonal lugs for stability in varying conditions

INSTINCT TACTICAL



25331



25331



25332

DANNER® DRY *Thinsulate Ultra* INSULATION **BOUNDLITE**

STYLE #	HEIGHT	COLOR	WATERPROOF	INSULATION	SAFETY	WEIGHT
25331	8"	Black	✓	-	-	51 oz
25332	8"	Black	✓	400G	-	54 oz

SIZES

LAST DT6

D: 6-16 [½ thru 12]; EE: 6-16 [½ thru 12]

- Durable, waterproof polishable leather or water-resistant suede and ripstop nylon upper
- Danner® Dry waterproof protection
- Instinct series features a Danner® Dry waterproof liner, which has been tested for body fluid borne pathogen resistance and meets or exceeds ASTM F1671-18 standards
- Select styles available with Thinsulate™ Ultra Insulation
- Semi-locking YKK® Side-Zip
- Danner® Boundlite platform provides superior rebound and comfort underfoot
- PerfX PU footbed offers lightweight cushioning, lasting durability and breathability
- Low density PU midsole offers shock absorption and lasting rebound
- Nylon shank
- Danner® Instinct slip-resistant rubber outsole with pentagonal lugs offers stability and superior traction
- Insulated style features FrostTrekker rubber compound for traction in cold weather

TACHYON



50124



50120



50122

GORE-TEX® PRODUCTS

STYLE #	HEIGHT	COLOR	WATERPROOF	INSULATION	SAFETY	WEIGHT
50120	8"	Black	-	-	-	26 oz
50122	8"	Black	✓	-	-	26 oz
50124	8"	Black	-	-	-	26 oz

SIZES AVAILABLE IN EXTENDED SIZES

LAST DLE-01

50120, 50122 D: 3-16 [½ thru 12]; EE: 3-16 [½ thru 12]

50124 D: 8-15 [½ thru 12]; EE: 9-14 [½ thru 12]

- GORE-TEX waterproof breathable lining or moisture wicking mesh lining options
- Polishable toe (50122, 50124)
- Speed lacing system for secure, enhanced fit
- Cushioning PU footbed
- EVA cushioning and shock-absorbing midsole
- Nylon shank
- Danner® Tachyon slip-resistant rubber outsole with low pentagonal lug pattern offers superior ground contact

STRIKER® BOLT



26633

26630

GORE-TEX® PRODUCTS // TFN 

STYLE #	HEIGHT	COLOR	WATERPROOF	INSULATION	SAFETY	WEIGHT
26630	4.5"	Black	✓	-	-	53 oz
26633	8"	Black	✓	-	-	61 oz

SIZES AVAILABLE IN WOMEN'S

LAST 851

D: 6-16 [½ thru 12]; EE: 6-16 [½ thru 12]

- Durable, polishable, PU coated leather and nylon upper
- GORE-TEX waterproof breathable lining
- Lace garage
- Cushioning PU footbed
- TERRA FORCE® NEXT™ platform combines an internal and external shank system to provide arch support and torsion control
- Vibram® SPE midsole for maximum rebound, comfort and support
- Bi-Fit stability board for underfoot comfort, reduced weight and added forefoot flex
- Vibram® Striker® Bolt outsole is slip resistant and offers maximum surface contact while gripping on and off pavement

STRIKER® BOLT SIDE-ZIP



26635

26635

26634

GORE-TEX® PRODUCTS // TFN 

STYLE #	HEIGHT	COLOR	WATERPROOF	INSULATION	SAFETY	WEIGHT
26634	8"	Black	✓	-	-	61 oz
26635	6"	Black	✓	-	-	56 oz

SIZES

LAST 851

D: 6-16 [½ thru 12]; EE: 6-16 [½ thru 12]

- Durable, polishable, PU coated leather and nylon upper
- GORE-TEX waterproof breathable lining
- Semi-locking YKK® side-zip
- Lace garage
- Cushioning PU footbed
- TERRA FORCE® NEXT™ platform combines an internal and external shank system to provide arch support and torsion control
- Vibram® SPE midsole for maximum rebound, comfort and support
- Bi-Fit stability board for underfoot comfort, reduced weight and added forefoot flex
- Vibram® Striker® Bolt outsole is slip-resistant and offers maximum surface contact while gripping on and off pavement

SCORCH SIDE-ZIP



DANNER® DRY OrthoLite® PLYOLITE

STYLE #	HEIGHT	COLOR	WATERPROOF	INSULATION	SAFETY	WEIGHT
25730	6"	Black	-	-	-	37 oz
25731	6"	Black	✓	-	-	43 oz
25732	8"	Black	-	-	-	40 oz
25733	8"	Black	✓	-	-	45 oz

SIZES

LAST 1368

D: 6-16 [½ thru 12]; EE: 6-16 [½ thru 12]

- Lightweight, strategically patterned upper for maximum air circulation (mesh panels are transparent and may reveal sock color or pattern on non-waterproof styles)
- Danner® Dry waterproof protection or breathable mesh lining
- Danner® Dry options have been tested for body fluid borne pathogen resistance and meets or exceeds ASTM F1671-18 standards
- Semi-locking YKK® Side-Zip
- Polishable toe
- Speed lacing for quick adjustments
- Cushioning open-cell OrthoLite® footbed
- Danner® Plyolite® EVA midsole offers lasting support and rebound
- Nylon shank
- Danner® Scorch outsole is slip resistant and designed with a stability control arch

LOOKOUT



DANNER® DRY Thinsulate® Ultra INSULATION // DCS

STYLE #	HEIGHT	COLOR	WATERPROOF	INSULATION	SAFETY	WEIGHT
23822	8"	Black	✓	-	-	56 oz
23827	8"	Black	✓	800G	-	66 oz

SIZES

LAST DCP1-H

D: 6-16 [½ thru 12]; EE: 6-16 [½ thru 12]

- Durable, waterproof, polishable leather upper with ripstop ballistic nylon
- Anatomical design and broader toe box for a more responsive fit
- Danner® Dry waterproof protection
- Lookout series features a Danner® Dry waterproof liner, which has been tested for body fluid borne pathogen resistance and meets or exceeds ASTM F1671-18 standards
- Select styles available with Thinsulate™ Ultra Insulation
- Patented dual-density footbed for cushioning and underfoot air circulation, with an Airthotic® heel clip for support
- Nylon shank
- Danner® Comfort System platform offers superior comfort, support and durability
- Danner® Lookout slip-resistant outsole with low pentagonal lug pattern offers superior traction and maneuverability
- Insulated style features FrostTrekker rubber compound for traction in cold weather

LOOKOUT SIDE-ZIP



23824



23824

DANNER® DRY //DCS

STYLE #	HEIGHT	COLOR	WATERPROOF	INSULATION	SAFETY	WEIGHT
23824	8"	Black	✓	-	-	56 oz

SIZES

LAST DCP1-H

D: 6-16 [1/2 thru 12]; EE: 6-16 [1/2 thru 12]

- Durable, waterproof, polishable leather upper with ripstop ballistic nylon
- Anatomical design and broader toe box for a more responsive fit
- Danner® Dry waterproof protection
- Lookout series features a waterproof liner, Danner® Dry, which has been tested for body fluid borne pathogen resistance, and meets or exceeds ASTM F1671-18 standards
- Patented dual-density footbed for cushioning and underfoot air circulation, with an Airthotic® heel clip for support
- Nylon shank
- Danner® Comfort System platform offers superior comfort, support and durability
- Danner® Lookout slip-resistant outsole with low pentagonal lug pattern offers superior traction and maneuverability
- Non-metallic toe meets or exceeds ASTM F2413-18 I/75 C/75 EH
- Semi-locking zipper

LOOKOUT EMS/CSA SIDE-ZIP



23826



23826

DANNER® DRY //DCS 

STYLE #	HEIGHT	COLOR	WATERPROOF	INSULATION	SAFETY	WEIGHT
23826	8"	Black	✓	-	NMT	66 oz

SIZES

LAST DCP1-H

B: 3-16 [1/2 thru 12]; D: 3-16 [1/2 thru 12]; EE: 3-16 [1/2 thru 12]

- Durable, waterproof, polishable leather upper
- Anatomical design and broader toe box for a more responsive fit
- Danner® Dry waterproof protection
- Lookout series features a Danner® Dry waterproof liner, which has been tested for body fluid borne pathogen resistance and meets or exceeds ASTM F1671-18 standards
- Semi-locking side-zip
- Patented dual-density footbed for cushioning and underfoot air circulation, with an Airthotic® heel clip for support
- Nylon shank
- Danner® Comfort System platform offers superior comfort, support and durability
- Danner® Lookout slip-resistant outsole with low pentagonal lug pattern offers superior traction and maneuverability
- Non-metallic toe meets or exceeds ASTM F2413-18 I/75 C/75 EH
- Puncture resistant midsole CSA certified to -2195

KINETIC



28010

GORE-TEX
PRODUCTS

STYLE #	HEIGHT	COLOR	WATERPROOF	INSULATION	SAFETY	WEIGHT
28010	8"	Black	✓	-	-	51 oz

SIZES

LAST 1368

D: 6-16 [½ thru 12]; EE: 7-14 [½ thru 12]

- Durable, waterproof, polishable full-grain leather upper with ripstop ballistic nylon
- GORE-TEX waterproof breathable lining
- Speed lacing system with semi-locking side-zip for secure, enhanced fit
- Cushioning PU footbed
- PU midsole
- Nylon shank
- Danner® Kinetic slip-resistant rubber outsole offers superior surface contact and traction

KINETIC SIDE-ZIP



28012



28012



28017

GORE-TEX
PRODUCTS

STYLE #	HEIGHT	COLOR	WATERPROOF	INSULATION	SAFETY	WEIGHT
28012	8"	Black	✓	-	-	53 oz
28017	6"	Black	✓	-	-	48 oz

SIZES

LAST 1368

D: 6-16 [½ thru 12]; EE: 6-16 [½ thru 12]

- Durable, waterproof, polishable full-grain leather upper with ripstop ballistic nylon
- GORE-TEX waterproof breathable lining
- Speed lacing system with semi-locking side-zip for secure, enhanced fit
- Cushioning PU footbed
- PU midsole
- Nylon shank
- Danner® Kinetic slip-resistant rubber outsole offers superior surface contact and traction

PATROL



25200

GORE-TEX PRODUCTS // STITCHDOWN 



STYLE #	HEIGHT	COLOR	WATERPROOF	INSULATION	SAFETY	WEIGHT
25200	6"	Black	✓	-	-	59 oz

SIZES AVAILABLE IN WOMEN'S

LAST 650

D: 7-15 [1/2 thru 12]; EE: 6-13 [1/2 thru 12]

▪ **Made in the USA**

- Durable, polishable full-grain leather upper with lightweight 1000 denier nylon
- GORE-TEX waterproof breathable lining
- Lace-to-toe design for secure fit
- Fiberglass shank
- Handcrafted, stitchdown construction for strength and stability
- Vibram® 1276 Sierra oil-and-slip-resistant outsole for traction in diverse terrain
- Recraftable

ACADIA®



21210, 22500, 22600, 69210

GORE-TEX PRODUCTS *Thinsulate Ultra* *Thinsulate* // STITCHDOWN 



STYLE #	HEIGHT	COLOR	WATERPROOF	INSULATION	SAFETY	WEIGHT
21210	8"	Black	✓	-	-	66 oz
22500	8"	Black	✓	-	NMT	70 oz
22600	8"	Black	✓	400G	-	69 oz
69210	8"	Black	✓	200G	-	66 oz

SIZES AVAILABLE IN WOMEN'S

LAST 650 [21210, 22600, 69210]; 516 [22500]

21210 B: 8-14 [1/2 thru 12]; D: 7-16 [1/2 thru 12]; EE: 6-15 [1/2 thru 12]; EEEE: 8-14 [1/2 thru 12]

22500 D: 7-14 [1/2 thru 12]; EE: 6-13 [1/2 thru 12]

22600, 69210 B: 8-14 [1/2 thru 12]; D: 7-15 [1/2 thru 12]; EE: 6-13 [1/2 thru 12]

▪ **Made in the USA**

- Durable, waterproof, polishable full-grain leather upper with lightweight 1000 denier nylon
- GORE-TEX waterproof breathable lining
- Select styles available with Thinsulate™ and Thinsulate™ Ultra Insulation
- Lace-to-toe design for secure fit
- Fiberglass shank
- Handcrafted, stitchdown construction for strength and stability
- Vibram® 148 Kletterlift oil-and-slip-resistant outsole offers superior traction, stability and shock absorption
- Non-metallic toe meets or exceeds ASTM F2413-18 I/75 C/75 EH
- Recraftable

RECON



69410

GORE-TEX PRODUCTS Thinsulate INSULATION // STITCHDOWN Vibram



STYLE #	HEIGHT	COLOR	WATERPROOF	INSULATION	SAFETY	WEIGHT
69410	8"	Black	✓	200G	-	66 oz

SIZES AVAILABLE IN WOMEN'S

LAST 650

D: 7-15 [1/2 thru 12]; EE: 6-14 [1/2 thru 12]

- **Made in the USA**
- Durable, waterproof, polishable full-grain leather upper
- GORE-TEX waterproof breathable lining
- Thinsulate™ Insulation
- Lace-to-toe design for secure fit
- Fiberglass shank
- Handcrafted, stitchdown construction for strength and stability
- Vibram® 148 Kletterlift oil-and-slip-resistant outsole offers superior traction, stability and shock absorption
- Recraftable

FORT LEWIS



29110, 69110

GORE-TEX PRODUCTS Thinsulate INSULATION // STITCHDOWN Vibram



STYLE #	HEIGHT	COLOR	WATERPROOF	INSULATION	SAFETY	WEIGHT
29110	10"	Black	✓	-	-	74 oz
69110	10"	Black	✓	200G	-	74 oz

SIZES AVAILABLE IN WOMEN'S

LAST 650

29110 D: 7-15 [1/2 thru 12]; EE: 6-13 [1/2 thru 12]

69110 B: 8-14 [1/2 thru 12]; D: 7-15 [1/2 thru 12]; EE: 6-13 [1/2 thru 12]

- **Made in the USA**
- Durable, waterproof, polishable full-grain leather upper
- GORE-TEX waterproof breathable lining
- Select styles available with Thinsulate™ Insulation
- Lace-to-toe design for secure fit
- Fiberglass shank
- Handcrafted, stitchdown construction for strength and stability
- Vibram® 148 Kletterlift oil-and-slip-resistant outsole offers superior traction, stability and shock absorption
- Recraftable

NEW RESURGENT



50110



STYLE #	HEIGHT	COLOR	UNIFORM COMPLIANCE	WATERPROOF	INSULATION	SAFETY	WEIGHT
50110	8"	Coyote	Army/Air Force	-	-	-	32 oz

SIZES

LAST DLE-01

D: 6-16 [1/2 thru 12]; EE: 6-16 [1/2 thru 12]

- **Meets AR 670-1 (Army) and AFI 36-2903 (Air Force) requirements for optional wear**
- Rough out leather and Perspair upper offers extreme abrasion-resistance and durability with maximum breathability in a lightweight construction
- DWR-coated upper provides protection from the elements and allows superior breathability
- Cushioning PU footbed
- Resurge low-density EVA midsole provides superior rebound and energy return with minimal weight
- Handcrafted, opanka-stitch construction for strength and stability
- Exclusive Vibram® Resurgent slip-resistant outsole features large pentagonal lugs for stability in varying conditions

TACHYON



50136

STYLE #	HEIGHT	COLOR	UNIFORM COMPLIANCE	WATERPROOF	INSULATION	SAFETY	WEIGHT
50136	8"	Coyote	Army/Air Force	-	-	-	26 oz

SIZES AVAILABLE IN EXTENDED SIZES

LAST DLE-01

D: 3-16 [1/2 thru 12]; EE: 3-16 [1/2 thru 12]

- **Meets AR 670-1 (Army) and AFI 36-2903 (Air Force) requirements for optional wear**
- Durable, rough-out leather upper with lightweight 500 denier nylon
- Speed lacing system for secure, enhanced fit
- Cushioning, open-cell PU footbed
- EVA cushioning and shock-absorbing midsole
- Nylon shank
- Danner® Tachyon slip-resistant rubber outsole with pentagonal lug pattern offers superior ground contact

SCORCH MILITARY



53661

Ortholite® **PLYOLITE**

STYLE #	HEIGHT	COLOR	UNIFORM COMPLIANCE	WATERPROOF	INSULATION	SAFETY	WEIGHT
53661	8"	Coyote	Army/Air Force	-	-	-	42 oz

SIZES

LAST 1368

D: 8-15 [½ thru 12]; EE: 9-14 [½ thru 12]

- **Meets AR 670-1 (Army) and AFI 36-2903 (Air Force) requirements for optional wear**
- Cattlehide suede and 1000 denier nylon
- Breathable mesh lining
- Speed lacing for quick adjustments
- Cushioning open-cell OrthoLite® footbed
- Danner® Plyolite® EVA midsole offers lasting support and rebound
- Nylon shank
- Danner® Scorch outsole is slip resistant and designed with a stability control arch

TANICUS



55316, 55317, 55322 **NEW** 55325

55322, 55325

DANNER® DRY *Thinsulate* Ultra INSULATION

STYLE #	HEIGHT	COLOR	UNIFORM COMPLIANCE	WATERPROOF	INSULATION	SAFETY	WEIGHT
55316	8"	Coyote	Army/Air Force	-	-	-	38 oz
55317	8"	Coyote	Army/Air Force	✓	-	-	42 oz
55322	8"	Coyote Side-Zip	Air Force	-	-	NMT	53 oz
55325	8"	Coyote Side-Zip	Air Force	✓	400G	NMT	58 oz

SIZES AVAILABLE IN EXTENDED SIZES

LAST 851

55316 D: 6-16 [½ thru 12]; EE: 6-16 [½ thru 12]

55317 D: 3-16 [½ thru 12]; EE: 3-16 [½ thru 12]

55322 D: 3-16 [½ thru 12]; EE: 5-16 [½ thru 12]

55325 D: 3-16 [½ thru 12]; EE: 6-16 [½ thru 12]

- **Meets AR 670-1 (Army) and AFI 36-2903 (Air Force) requirements for optional wear**
- Durable, rough-out leather upper with lightweight 1000 denier nylon
- Danner® Dry waterproof protection or breathable, moisture-wicking mesh lining options
- Select styles available with Thinsulate™ Ultra Insulation
- Optional semi-locking side-zip
- Cushioning PU footbed
- Bi-Fit stability board for underfoot comfort, reduced weight and added forefoot flex
- Danner® Tanicus slip-resistant outsole with pentagonal lug pattern offers superior durability and stability
- Non-metallic toe meets or exceeds ASTM F2413-18 I/75 C/75 EH

RIVOT TFX®



51510, 51512, 51513, 51514



- Made in the USA
- Meets AR 670-1 (Army) and AFI 36-2903 (Air Force) requirements for optional wear
- Certified Safe to Fly optional wear by the Department of Defense features a Vibram® Fire and Ice outsole for heat protection
- Durable, rough-out leather upper with lightweight 1000 denier nylon
- GORE-TEX waterproof breathable lining or moisture-wicking air mesh lining and ventilation technology
- Select styles available with Thinsulate™ Ultra Insulation
- Speed lacing system for secure, enhanced fit
- Cushioning PU footbed
- Fiberglass shank
- TERRA FORCE® X platform offers lightweight performance and stability
- Vibram® Rivot TFX 360° lugged outsole offers superior grip and mobility for increased pivot movements
- Non-metallic toe meets or exceeds ASTM F2413-18 I/75 C/75 EH

STYLE #	HEIGHT	COLOR	UNIFORM COMPLIANCE	WATERPROOF	INSULATION	SAFETY	WEIGHT
51510	8"	Coyote	Army/Air Force	-	-	-	54 oz
51512	8"	Coyote	Army/Air Force	-	-	NMT	56 oz
51513	8"	Coyote	Army/Air Force	-	-	STF	56 oz
51514	8"	Coyote	Army/Air Force	✓	400G	-	56 oz

SIZES AVAILABLE IN WOMEN'S

LAST 851

51510, 51514 D: 6-16 [½ thru 12]; EE: 6-16 [½ thru 12]


51513 D: 6-16 [½ thru 12]; EE: 6-14 [½ thru 12]

51512 D: 6-14 [½ thru 12]; EE: 6-14 [½ thru 12]

DESERT TFX® G3



24323

GORE-TEX PRODUCTS // TFX-B 

STYLE #	HEIGHT	COLOR	UNIFORM COMPLIANCE	WATERPROOF	INSULATION	SAFETY	WEIGHT
24323	8"	Coyote	Army/Air Force	✓	-	-	53 oz

SIZES **LAST** 851

D: 6-16 [1/2 thru 12]; EE: 6-16 [1/2 thru 12]

- **Meets AR 670-1 (Army) and AFI 36-2903 (Air Force) requirements for optional wear**
- Durable, rough-out leather upper with lightweight 1000 denier nylon
- GORE-TEX waterproof breathable lining
- Variable lacing system with lace garage for customizable fit
- Nylon shank
- Danner® TFX-8 platform with cross-stitch design offers added durability and stability in the lateral toe and medial heel pivot zones
- Vibram® Striker® Torrent oil-and-slip-resistant 360° low pentagonal lugged outsole offers grip in all directions with a flex notch design in key pivot areas and a more rugged outer lug pattern which sheds water and provides maximum surface contact

MARINE EXPEDITIONARY BOOT



53110, 53111, 53117

GORE-TEX PRODUCTS // STITCHDOWN   

STYLE #	HEIGHT	COLOR	UNIFORM COMPLIANCE	WATERPROOF	INSULATION	SAFETY	WEIGHT
53110	8"	Mojave	Marine Corps	-	-	-	70 oz
53111	8"	Mojave	Marine Corps	✓	-	-	70 oz
53117	8"	Mojave/Aviator	Marine Corps	-	-	ST/EH	74 oz

SIZES AVAILABLE IN EXTENDED SIZES **LAST** 610

R: 3-16 [1/2 thru 12]; W: 3-16 [1/2 thru 12]

- **Made in the USA**
- **USMC Certified with Eagle, Globe and Anchor emblem**
- Durable, nubuck leather upper with lightweight 1000 denier nylon
- GORE-TEX waterproof breathable lining or moisture-wicking air mesh lining and ventilation technology
- Speed lacing system with lace-to-toe design for secure fit
- Cushioning PU footbed
- Fiberglass shank
- Handcrafted, stitchdown construction for strength and stability
- Vibram® 360 outsole with Dri-Ice compound offers superior traction in rugged and cold-weather environments
- Marine Expeditionary Boot - Aviator features a Vibram® 1276 Sierra outsole for traction in diverse terrain
- Steel toe meets or exceeds ASTM F2413-18 I/75 C/75 EH
- Recraftable



WOMEN'S TACTICAL

PATROL



25200

GORE-TEX PRODUCTS // STITCHDOWN 



STYLE #	HEIGHT	COLOR / PATTERN	WATERPROOF	INSULATION	SAFETY	WEIGHT
25200	6"	Black	✓	-	EH	59 oz

SIZES

LAST 650

M: 5-10 [½ thru 10]

- **Made in the USA**
- Durable, waterproof, polishable full-grain leather upper with lightweight 1000 denier nylon
- GORE-TEX waterproof breathable lining
- Lace-to-toe design for secure fit
- Fiberglass shank
- Handcrafted, stitchdown construction for strength and stability
- Vibram® 1276 Sierra oil-and-slip-resistant outsole for traction in diverse terrain
- Recraftable

ACADIA®



21210, 22600, 69210

GORE-TEX PRODUCTS Thinsulate Ultra INSULATION Thinsulate INSULATION // STITCHDOWN 



STYLE #	HEIGHT	COLOR / PATTERN	WATERPROOF	INSULATION	SAFETY	WEIGHT
21210	8"	Black	✓	-	EH	66 oz
22600	8"	Black	✓	400G	EH	69 oz
69210	8"	Black	✓	200G	EH	66 oz

SIZES

LAST 650

M: 5-10 [½ thru 10]

- **Made in the USA**
- Durable, waterproof, polishable full-grain leather upper with lightweight 1000 denier nylon
- GORE-TEX waterproof breathable lining
- Available with Thinsulate™ Insulation and Thinsulate™ Ultra Insulation
- Lace-to-toe design for secure fit
- Fiberglass shank
- Handcrafted, stitchdown construction for strength and stability
- Vibram® 148 Kletterlift oil-and-slip-resistant outsole offers superior traction, stability and shock absorption on rugged terrain
- Recraftable

RECON



69410

GORE-TEX PRODUCTS Thinsulate INSULATION // STITCHDOWN Vibram USA

STYLE #	HEIGHT	COLOR / PATTERN	WATERPROOF	INSULATION	SAFETY	WEIGHT
69410	8"	Black	✓	200G	EH	66 oz

SIZES **LAST** 650

M: 5-10 [½ thru 10]

- **Made in the USA**
- Durable, waterproof, polishable full-grain leather upper
- GORE-TEX waterproof breathable lining
- Thinsulate™ Insulation
- Lace-to-toe design for secure fit
- Fiberglass shank
- Handcrafted, stitchdown construction for strength and stability
- Vibram® 148 Kletterlift oil-and-slip-resistant outsole offers superior traction, stability and shock absorption on rugged terrain
- Recraftable

FORT LEWIS



29110, 69110

GORE-TEX PRODUCTS Thinsulate INSULATION // STITCHDOWN Vibram USA

STYLE #	HEIGHT	COLOR / PATTERN	WATERPROOF	INSULATION	SAFETY	WEIGHT
29110	10"	Black	✓	-	EH	74 oz
69110	10"	Black	✓	200G	EH	74 oz

SIZES **LAST** 650

M: 5-10 [½ thru 10]

- **Made in the USA**
- Durable, waterproof, polishable full-grain leather upper
- GORE-TEX waterproof breathable lining
- Available with Thinsulate™ insulation
- Lace-to-toe design for secure fit
- Fiberglass shank
- Handcrafted, stitchdown construction for strength and stability
- Vibram® 148 Kletterlift oil-and-slip-resistant outsole offers superior traction, stability and shock absorption on rugged terrain
- Recraftable

PROWESS



22311

DANNER® DRY

STYLE #	HEIGHT	COLOR / PATTERN	UNIFORM COMPLIANCE	WATERPROOF	INSULATION	SAFETY	WEIGHT
22311	8"	Coyote	Army/Air Force	-	-	-	32 oz

SIZES

LAST DT5

M: 5-12 [½ thru 10]; W: 5-11 [½ thru 10]

- **Meets AR 670-1 [Army] and AFI 36-2903 [Air Force] requirements for optional wear**
- Suede or full-grain leather and 1000 denier nylon upper
- Danner® Dry waterproof protection or breathable mesh lining options
- Optional semi-locking side zip
- Cushioning PU footbed
- Lightweight, shock-absorbing EVA midsole
- Danner® Tanicus slip-resistant outsole with pentagonal lug pattern offers superior durability and stability

RIVOT TFX®



51516

GORE-TEX® PRODUCTS Thinsulate™ Ultra INSULATION // TFX



STYLE #	HEIGHT	COLOR / PATTERN	UNIFORM COMPLIANCE	WATERPROOF	INSULATION	SAFETY	WEIGHT
51516	8"	Coyote	Army/Air Force	✓	400G	EH	58 oz

SIZES

LAST 851

M: 5-11 [½ thru 10]

- **Made in the USA**
- **Meets AR 670-1 [Army] and AFI 36-2903 [Air Force] requirements for optional wear**
- Durable, rough-out leather upper with lightweight 1000 denier nylon
- GORE-TEX waterproof breathable lining
- Thinsulate™ Ultra Insulation
- Speed lacing system for secure, enhanced fit
- Cushioning PU footbed
- Fiberglass shank
- TERRA FORCE® X platform offers lightweight performance and stability
- Danner® Vibram® Rivot TFX 360° lugged outsole offers superior grip and mobility for increased pivot movements



MEN'S HUNT

NEW CEDAR RIVER MOC TOE HUNTER



14304

DANNER® DRY OrthoLite®

STYLE #	HEIGHT	COLOR / PATTERN	WATERPROOF	INSULATION	WEIGHT
14304	8"	Timberwolf	✓	-	67 oz

SIZES

LAST 503

D: 7-15 [½ thru 12]; EE: 7-14 [½ thru 12]

- Durable all-leather upper
- Danner® Dry waterproof protection
- Moc Toe design with contrasting stitch
- Padded collar for additional comfort
- Cushioning open-cell OrthoLite® footbed
- Stable, long-lasting Goodyear welt construction
- Danner® Cedar River non-marking, oil-and-slip-resistant rubber outsole offers confident traction and all-day comfort on hard surfaces

RECURVE



47611, 47612



47613

DANNER® DRY Thinsulate™ Ultra INSULATION OrthoLite® Vibram® MEGAGRIP MOSSY OAK

STYLE #	HEIGHT	COLOR / PATTERN	WATERPROOF	INSULATION	WEIGHT
47611	7"	Brown All-Leather	✓	-	45 oz
47613	7"	Mossy Oak® Original Bottomland™	✓	-	45 oz
47612	7"	Brown All-Leather	✓	400G	48 oz

SIZES

LAST DPDX

D: 7-14 [½ thru 12]; EE: 9-13 [½ thru 12]

- Waterproof, full-grain leather and nylon upper
- Danner® Dry waterproof protection
- Select styles available with Thinsulate™ Ultra Insulation
- Cushioning open-cell OrthoLite® footbed
- Vibram® SPE midsole for maximum rebound, comfort and support
- Nylon shank
- TPU heel frame to enhance support and stability
- Vibram® Recurve outsole with Megagrip technology features adaptive lugs and flex lines for superior grip in wet and dry terrain

PRONGHORN®



STYLE #	HEIGHT	COLOR / PATTERN	WATERPROOF	INSULATION	WEIGHT
41340	8"	Brown	✓	-	53 oz
41341	8"	Realtree Edge™	✓	400G	56 oz
41345	8"	Brown All-Leather	✓	400G	58 oz
41342	8"	Mossy Oak® Break-Up Country®	✓	800G	59 oz
41343	8"	Realtree Edge™	✓	1200G	64 oz

SIZES

LAST 851

D: 7-16 [½ thru 12]; EE: 8-14 [½ thru 12]

- Waterproof, full-grain leather and nylon or all-leather upper
- GORE-TEX waterproof breathable lining
- Select styles available with PrimaLoft® insulation
- Rugged hardware for secure fit and long lasting performance
- Cushioning PU footbed
- TERRA FORCE® NEXT™ platform combines an internal and external shank system to provide arch support and torsion control
- Vibram® SPE midsole for maximum rebound, comfort and support
- Thermoplastic PU shank
- Bi-Fit stability board for underfoot comfort, reduced weight and added forefoot flex
- Vibram® Pronghorn® outsole offers superior traction on rugged terrain

VITAL



STYLE #	HEIGHT	COLOR / PATTERN	WATERPROOF	INSULATION	WEIGHT
41550	8"	Brown	✓	-	46 oz
41559	8"	Realtree Edge™	✓	-	46 oz
41552	8"	Mossy Oak® Break-Up Country®	✓	400G	50 oz
41556	8"	Brown	✓	400G	50 oz
41560	8"	Realtree Edge™	✓	800G	53 oz
41555	8"	Mossy Oak® Break-Up Country®	✓	1200G	56 oz

SIZES

LAST DT4

D: 7-16 [½ thru 12]; EE: 8-14 [½ thru 12]

- Abrasion-resistant leather and textile upper
- Danner® Dry waterproof protection
- Select styles available with Thinsulate™ Ultra Insulation
- Lock and load lacing system: ghilles across the forefoot for secure fit and locking speed hooks for quick, quiet lacing
- Mesh liner layered over Danner® Dry on tongue to help regulate both moisture and temperature
- Multi-density foam patterning eliminates hotspots and pinch points
- Molded, open-cell PU footbed
- Danner® Plyolite® EVA midsole offers lasting support and rebound
- Nylon shank
- TPU heel clip for enhanced support and stability
- Danner® Vital outsole provides grip on moss, rock and slick surfaces

ELEMENT



47130



47131



47132

DANNER® DRY

Thinsulate™ Ultra
INSULATION



STYLE #	HEIGHT	COLOR / PATTERN	WATERPROOF	INSULATION	WEIGHT
47130	8"	Brown	✓	-	43 oz
47131	8"	Realtree Edge™	✓	400G	46 oz
47132	8"	Mossy Oak® Break-Up Country®	✓	800G	48 oz

SIZES

LAST DPDX

D: 7-15 [½ thru 12]; EE: 8-14 [½ thru 12]

- Waterproof, full-grain leather upper with lightweight 900 denier nylon
- Danner® Dry waterproof breathable lining
- Select styles available with Thinsulate™ Ultra Insulation
- Rugged hardware for secure fit and long lasting performance
- Cushioning PU footbed
- Specially formulated rubberized EVA midsole
- Fiberglass shank
- Danner® Element outsole offers superior traction on rugged terrain

SHARPTAIL



45026



45025

GORE-TEX®
PRODUCTS

OrthoLite® // TF

STYLE #	HEIGHT	COLOR / PATTERN	WATERPROOF	INSULATION	WEIGHT
45025	10"	Dark Brown	✓	-	51 oz
45026	8"	Dark Brown	✓	-	51 oz

SIZES

LAST 851

45025 D: 7-16 [½ thru 12]; EE: 8-14 [½ thru 12]

45026 D: 7-15 [½ thru 12]; EE: 8-14 [½ thru 12]

- Waterproof, full-grain leather upper with lightweight 900 denier nylon
- Optional rear zipper for easy in and out
- GORE-TEX waterproof breathable lining
- Rugged hardware for secure fit and long-lasting performance
- Cushioning open-cell OrthoLite® footbed
- EVA cushioning and shock absorbing midsole
- Thermoplastic PU shank
- TERRA FORCE® platform offers lightweight performance and stability
- Danner® Sharptail outsole offers superior traction on hard-packed terrain

GROUSE



57300

GORE-TEX PRODUCTS // *STITCHDOWN*



STYLE #	HEIGHT	COLOR / PATTERN	WATERPROOF	INSULATION	WEIGHT
57300	8"	Brown	✓	-	62 oz

SIZES

LAST 650

D: 7-14 [½ thru 12]; EE: 6-13 [½ thru 12]; EEE: 8-13 [½ thru 12]

- **Made in the USA**
- Waterproof, full-grain leather upper with breathable Cordura® nylon
- GORE-TEX waterproof breathable lining
- Fiberglass shank
- Danner® Airthotic® heel cradle and arch support
- Handcrafted, stitchdown construction for strength and stability
- Patented Danner Bob® self-cleaning outsole offers superior traction in snow and mud
- Recraftable

SIERRA



63100

GORE-TEX PRODUCTS *Thinsulate* INSULATION // *STITCHDOWN* 



STYLE #	HEIGHT	COLOR / PATTERN	WATERPROOF	INSULATION	WEIGHT
63100	8"	Brown	✓	200G	64 oz

SIZES AVAILABLE IN WOMEN'S

LAST 650

B: 8-14 [½ thru 12]; D: 7-15 [½ thru 12]; EE: 6-13 [½ thru 12]

- **Made in the USA**
- Waterproof, full-grain leather upper with breathable Cordura® nylon
- GORE-TEX waterproof breathable lining
- Thinsulate™ Insulation
- Fiberglass shank
- Danner® Airthotic® heel cradle and arch support
- Handcrafted, stitchdown construction for strength and stability
- Vibram® 1276 Sierra outsole for traction in diverse terrain
- Recraftable

HOOD WINTER LIGHT



58900

GORE-TEX PRODUCTS *Thinsulate* INSULATION // **STITCHDOWN**



STYLE #	HEIGHT	COLOR / PATTERN	WATERPROOF	INSULATION	WEIGHT
58900	8"	Brown	✓	200G	70 oz

SIZES

LAST 650

D: 7-15 [½ thru 12]; EE: 8-13 [½ thru 12]

- **Made in the USA**
- Waterproof, full-grain leather upper
- GORE-TEX waterproof breathable lining
- Thinsulate™ Insulation
- Rugged hardware for secure fit and long-lasting performance
- PU midsole
- Thermoplastic PU shank
- Fiberglass shank
- Danner® Airthotic® heel cradle and arch support
- Handcrafted, stitchdown construction for strength and stability
- Vibram® 148 Kletterlift outsole offers superior traction, stability and shock absorption on rugged terrain
- Recraftable

CANADIAN



67200

GORE-TEX PRODUCTS *Thinsulate Ultra* INSULATION // **STITCHDOWN**



STYLE #	HEIGHT	COLOR / PATTERN	WATERPROOF	INSULATION	WEIGHT
67200	10"	Brown	✓	600G	78 oz

SIZES

LAST 650

D: 7-14 [½ thru 12]; EE: 6-13 [½ thru 12]

- **Made in the USA**
- Waterproof, full-grain leather upper
- Triple-stitched for ultimate durability and protection
- GORE-TEX waterproof breathable lining
- Thinsulate™ Ultra Insulation
- Fiberglass shank
- Danner® Airthotic® heel cradle and arch support
- Handcrafted, stitchdown construction for strength and stability
- Patented Danner Bob® self-cleaning outsole offers superior traction in snow and mud
- Recraftable

TROPHY



40000

GORE-TEX PRODUCTS *Thinsulate Ultra* INSULATION // **STITCHDOWN**



STYLE #	HEIGHT	COLOR / PATTERN	WATERPROOF	INSULATION	WEIGHT
40000	10"	Brown	✓	600G	77 oz

SIZES

LAST 610

D: 7-14 [½ thru 12]; EE: 8-14 [½ thru 12]

- **Made in the USA**
- Waterproof, full-grain leather upper
- GORE-TEX waterproof breathable lining
- Thinsulate™ Ultra Insulation
- Multi-density foam patterning eliminates hotspots and pinch points
- Cushioning PU footbed
- PU midsole
- Fiberglass shank
- Handcrafted, stitchdown construction for strength and stability
- Patented Danner Bob® self-cleaning outsole offers superior traction in snow and mud
- Recraftable

SAN ANGELO SNAKE BOOT



42752



42751

// **STITCHDOWN**



STYLE #	HEIGHT	COLOR / PATTERN	WATERPROOF	INSULATION	WEIGHT
42751	17"	Brown	-	-	62 oz
42752	17"	Brown	-	-	64 oz

SIZES

LAST 397 [42751], 398 [42752]

D: 7-16 [½ thru 12]; EE: 8-14 [½ thru 12]

- **Made in the USA with imported components**
- 360° snake-proof protection
- Full-grain leather and textile upper
- Leather lined
- Buckles at gusset and top of foot for customized fit
- Generous pull loop for easy on
- Steel shank
- Handcrafted, stitchdown construction for strength and stability
- Danner® San Angelo PU outsole with low lugs for increased surface contact, comfort and durability

VITAL SNAKE BOOT



41531

DANNER® DRY PLYOLITE 

STYLE #	HEIGHT	COLOR / PATTERN	WATERPROOF	INSULATION	WEIGHT
41531	17"	Mossy Oak® Break-Up Country™	✓	-	66 oz

SIZES

LAST DT-4

D: 7-16 [½ thru 12]; EE: 8-14 [½ thru 12]

- 360° snake-proof protection
- Abrasion-resistant leather and textile upper
- Danner® Dry waterproof protection or breathable mesh lining options
- Molded, open-cell PU footbed
- Danner® Plyolite® EVA midsole offers lasting support and rebound
- Nylon shank
- Danner® Vital outsole provides grip on moss, rock and slick surfaces

SHARPTAIL SNAKE BOOT



45041



45040

GORE-TEX®  // TF

STYLE #	HEIGHT	COLOR / PATTERN	WATERPROOF	INSULATION	WEIGHT
45040	17"	Dark Brown	✓	-	64 oz
45041	17"	Dark Brown	✓	-	70 oz

SIZES

LAST 851

D: 7-16 [½ thru 12]; EE: 8-14 [½ thru 12]

- 360° snake-proof protection
- Waterproof, full-grain leather upper with lightweight 900 denier nylon
- GORE-TEX waterproof breathable lining
- Lace-up features semi-locking side-zipper for easy in and out
- Slip-on features rear gusset with rugged hardware for adjustable fit and long-lasting performance
- Cushioning open-cell OrthoLite® footbed
- EVA cushioning and shock absorbing midsole
- Thermoplastic PU shank
- TERRA FORCE® platform offers lightweight performance and stability
- Danner® Sharptail outsole offers superior traction on hard-packed terrain



WOMEN'S HUNT

WAYFINDER



44212

44210

DANNER® DRY Thinsulate™ Ultra INSULATION PLYOLITE REALTREE

STYLE #	HEIGHT	COLOR / PATTERN	WATERPROOF	INSULATION	WEIGHT
44210	8"	Brown	✓	-	35 oz
44212	8"	Realtree Edge™	✓	800G	40 oz

SIZES

LAST DT5

M: 5-11 [½ thru 10]

- Durable suede and nylon upper
- Danner® Dry waterproof protection
- Available with Thinsulate™ Ultra Insulation
- Lace-to-toe design provides a more customized fit
- Open-cell, PU footbed
- Danner® Plyolite® EVA midsole offers lasting support and rebound
- Nylon shank
- Danner® Wayfinder outsole provides traction in diverse terrain

SIERRA



63100

GORE-TEX® PRODUCTS Thinsulate™ INSULATION // STITCHDOWN

STYLE #	HEIGHT	COLOR / PATTERN	WATERPROOF	INSULATION	WEIGHT
63100	8"	Brown	✓	200G	64 oz

SIZES

LAST 650

M: 5-10 [½ thru 10]

- **Made in the USA**
- Waterproof full-grain leather upper with breathable Cordura® nylon
- GORE-TEX waterproof breathable lining
- Thinsulate™ Insulation
- Danner® Airthotic® heel cradle and arch support
- Fiberglass shank
- Handcrafted, stitchdown construction for strength and stability
- Vibram® 1276 Sierra outsole for traction in diverse terrain
- Recraftable



ACCESSORIES



INQUIRE LIGHTWEIGHT SOCKS



75020, 75021



- **Made in USA with imported and domestic fibers**
- Reinforced toe and heel provides durability
- Flat knit design and mesh panels provide excellent durability
- Hidden "GO THERE" message in the interior of the welt

SIZE S, M, L

STYLE #	HEIGHT	COLOR	USE
75020	Crew	Light Gray	Hike
75021	Crew	Marine Green	Hike

MATERIALS

51% Merino Wool, 38% Nylon, 9% Polyester, 2% LYCRA® Spandex

PRONGHORN® MIDWEIGHT SOCKS



75029



- **Made in USA with imported and domestic fibers**
- Reinforced toe and heel provides durability
- Fully cushioned footbed provides underfoot comfort and support, particularly for users with flatter feet
- Targeted cushion on the shin decreases discomfort associated with flex pressure
- Hidden "GO THERE" message in the interior of the welt

SIZE S-XL

STYLE #	HEIGHT	COLOR	USE
75029	Crew	Olive	Hunt

MATERIALS

47% Merino Wool, 45% Nylon, 6% Polyester, 2% LYCRA® Spandex

RECKONING MIDWEIGHT SOCKS



75030



- **Made in USA with imported fibers**
- Seam-free toe reduces bunching and blisters
- Targeted cushion and venting zones
- Itch-free comfort
- Naturally breathable

SIZE S-XL

STYLE #	HEIGHT	COLOR	USE
75030	Over-Calf	Coyote	Tactical

MATERIALS

67% Merino Wool, 30% Nylon, 3% LYCRA® Spandex

MERINO MID/LIGHTWEIGHT SOCKS



75002, 75003, 75008, 75010, 75012



- Made in USA with imported fibers
- Seam-free toe reduces bunching and blisters
- Targeted cushion and venting zones
- Arch support helps reduce fatigue
- Itch-free comfort
- Naturally breathable
- Midweight [75002, 75003, 75010, 75012] and lightweight [75008]

SIZE S-XL [75008, 75012]; M-XL [75002, 75003, 75010]

STYLE #	HEIGHT	COLOR	USE
75002	Crew	Brown Heather	Hunt
75003	Over-Calf	Green	Hunt
75008	Crew	Gray	Hike
75010	Crew	Brown	Work
75012	Crew	Black	Uniform

MATERIALS

75002	72% Merino Wool*, 26% Nylon, 2% LYCRA® Spandex
75003	75% Merino Wool*, 23% Nylon, 2% LYCRA® Spandex
75008	65% Merino Wool*, 32% Nylon, 3% LYCRA® Spandex
75010	82% Merino Wool*, 17% Nylon, 1% LYCRA® Spandex
75012	80% Merino Wool*, 19% Nylon, 1% LYCRA® Spandex

* Non-mulesed wool

SOCK SIZING CHART

MEN'S M 6-8.5 L 9-12 XL 12.5-15

MERINO MID/LIGHTWEIGHT SOCKS



75007, 75014, 75016, 75017, 75018



- Made in USA with imported fibers
- Seam-free toe reduces bunching and blisters
- Targeted cushion and venting zones
- Arch support helps reduce fatigue
- HeiQ silver-based antimicrobial and odor control [75016, 75017, 75018]
- Lightweight [75007, 75014, 75016, 75017] and midweight [75018]

SIZE S-XL

STYLE #	HEIGHT	COLOR	USE
75007	1/4 Crew	Gray	Hike
75014	3/4 Crew	Charcoal/Green	Hike
75016	Ankle	Gray	Hike
75017	Crew	Gray	Hike
75018	Crew	Brown	Hike

MATERIALS

75007	67% Merino Wool*, 31% Nylon, 2% LYCRA® Spandex
75014	69% Merino Wool*, 29% Nylon, 2% LYCRA® Spandex
75016	59% Merino Wool*, 39% Nylon, 2% LYCRA® Spandex
75017	54% Merino Wool*, 42% Nylon, 4% LYCRA® Spandex
75018	63% Merino Wool*, 34% Nylon, 3% LYCRA® Spandex

* Non-mulesed wool

WOMEN'S SIZE CONVERSION S 4-6.5 M 7-9.5 L 10 and above

DRIRELEASE LIGHTWEIGHT SOCKS



75001, 75011



- Made in USA with imported fibers
- Drirelease® pulls moisture away from the skin for superior comfort and performance
- Seam-free toe reduces bunching and blisters
- Targeted cushion and venting zones
- Arch support helps reduce fatigue
- Quick-drying comfort
- Washed with FreshGuard® to help eliminate odors

SIZE S-XL [75011]

STYLE #	HEIGHT	COLOR	USE
75001	Over-Calf	Brown	Hunt
75011	Crew	Black	Uniform

MATERIALS

75001	58% Polyester, 32% Nylon, 8% Merino Wool*, 2% LYCRA® Spandex
75011	61% Polyester, 28% Nylon, 8% Merino Wool*, 3% LYCRA® Spandex

* Non-mulesed wool

TFX® HOT WEATHER DRYMAX®



H50201, H50203, H50211, H50212



- **Made in USA**
- Drymax® wicks away moisture to keep feet up to 25 times drier than polyester, acrylic, nylon or wool
- Microzap silver in Drymax® is antimicrobial for odor control

SIZE S-XL

STYLE #	HEIGHT	COLOR	WEIGHT
H50201	Over-Calf	Foliage Green	Lightweight
H50203	Over-Calf	Coyote Brown	Lightweight
H50211	Over-Calf	Black	Lightweight
H50212	Crew	Black	Lightweight

MATERIALS

Polyester 52%, Drymax® Olefin 27%, Elastane 12%, Nylon 9%

MERINO HEAVYWEIGHT SOCKS



75004



- **Made in USA with imported fibers**
- Seam-free toe reduces bunching and blisters
- Targeted cushion and venting zones
- Arch support helps reduce fatigue
- Itch-free comfort
- Naturally breathable

SIZE S-XL

STYLE #	HEIGHT	COLOR	USE
75004	Over-Calf	Gray	Hunt

MATERIALS

79% Merino Wool*, 20% Nylon, 1% LYCRA® Spandex

* Non-mulesed wool

NEW

DANNER® EVERGREEN SOCKS



75034



- **Made in USA with Imported fibers**
- Seam-free toe reduces bunching and blisters
- Arch Support helps reduce fatigue
- Itch-free comfort
- Naturally breathable

SIZE S-XL

STYLE #	HEIGHT	COLOR	USE
75034	Crew	Graphite	Hike

MATERIALS

39% Merino Wool, 31% Recycled Polyester, 28% Nylon, 2% Lycra Spandex

* Non-mulesed wool

SOCK SIZING CHART

MEN'S M 6-8.5 L 9-12 XL 12.5-15

WOMEN'S SIZE CONVERSION S 4-6.5 M 7-9.5 L 10 and above

26L DAYPACK



95820

- Durable nylon construction with leather reinforcement
- Offset laptop sleeve for protection
- Ergonomic shoulder straps with memory foam
- Adjustable sternum straps
- External front pocket
- Top hood zipper pocket
- Dual side pockets
- Draw cord closure system
- External accessory attachment loops
- Multiple zipper entry to main compartment

STYLE #	COLOR	DIMENSIONS
95820	Black/Monk's Robe	12.25" x 17" x 6.25"

TOOL BAG



90601



- **Made in USA**
- Heavy duty 16 oz cotton duck canvas construction
- Lightweight, durable aluminum frame
- Heavyweight vegetable-tanned leather handle and bottom
- Metal studs on bottom for wear protection
- Covered fiber board bottom
- Internal pocket

STYLE #	COLOR	DIMENSIONS
90601	Natural Canvas	16" x 12" x 6"

TOOL BELT



90602



- **Made in USA**
- Thick suede and natural leather construction for lasting durability
- 2 large pockets and 3 small tool pockets
- Full-grain leather hammer loop and tape holder
- 2 1/4" web belt fits 29" – 46" waists

STYLE #	COLOR	DIMENSIONS	MAX BELT LENGTH
90602	Brown	9.5" x 9 .75" x 1"	50"

BI-FOLD WALLET



7000107



- **Made in USA**
- Durable full-grain leather
- Slim bi-fold design
- 4 card slots

STYLE #	COLOR	DIMENSIONS
7000107	Brown	4.125" x 2.75"

PREMIUM BI-FOLD WALLET



90605



- **Made in USA**
- Premium Horween leather
- Slim bi-fold design
- 4 card slots
- 1 bill pocket

STYLE #	COLOR	DIMENSIONS
90605	Latigo	4.5" x 3.5"

PREMIUM TRUCKER WALLET



90606



- **Made in USA**
- Premium Horween leather
- Metal attachment eyelet for chains
- 4 card slots
- 2 bill pockets

STYLE #	COLOR	DIMENSIONS
90606	Latigo	7.5" x 4"

DLC MEMORY FOAM FOOTBED



90646

- Plush memory foam and PU provide instant and long-lasting comfort
- Footbed comes standard on the Danner Caliper family of boots
- Provides a more athletic fit for any boot built on the DPDX last including the Mountain 600, Jag, Stronghold and Full Bore

STYLE #	SIZE
90646	7-14 [1/2 thru 12]

DCS® FOOTBED



95916

// DCS

- Patented Danner® Comfort System footbed replacement*
- Air vents for increased breathability
- Extra heel impact zone for increased shock absorption
- Molded thermoplastic polyurethane cup for added arch support
- Quick-dry mesh cover top cloth

STYLE #	SIZES
95916	D: 6-14 [whole sizes only]

* Works only with DCS® footwear

DXT® COMFORT FOOTBED



95914

- Incorporates a dual-density shock-absorption system
- Tri-density system in the heel to reduce knee stress
- Molded thermoplastic polyurethane cup for added arch support
- Quick-dry microfiber top cloth

STYLE #	SIZES
95914	D: 6-14 [whole sizes only]

FATIGUE FIGHTER **FOOTBED**



95913

- Molded thermoplastic polyurethane cup for arch support
- Polyurethane air cushioning
- Quick-dry microfiber top cloth

STYLE #	SIZE	FIT SIZE*
95913	XS	Men's 4-6; Women's 6-8
	S	Men's 6.5-8.5; Women's 8.5-10.5
	M	Men's 9-10.5; Women's 11
	L	Men's 11-12.5
	XL	Men's 13-15

* Sizing equivalents. Sizes are unisex.

FOAM **AIRTHOTIC®**



96706

OrthoLite®

- Cushioning open-cell OrthoLite®
- Lightweight, machine washable and antimicrobial

STYLE #	SIZE	FIT SIZE*
96706	XS	Men's 4-5.5; Women's 4-6.5
	S	Men's 6-7.5; Women's 7-9.5
	M	Men's 8-9.5; Women's 10-11
	L	Men's 10-11.5
	XL	Men's 12-15

* Sizing equivalents. Sizes are unisex.

POLYURETHANE **AIRTHOTIC®**



96705



- **Made in USA**
- Molded thermoplastic polyurethane cup for arch support and heel alignment
- American Podiatric Medical Association accepted

STYLE #	SIZE	FIT SIZE*
96705	XS	Men's 4-5.5; Women's 4-6.5
	S	Men's 6-7.5; Women's 7-9.5
	M	Men's 8-9.5; Women's 10-11
	L	Men's 10-11.5
	XL	Men's 12-15

* Sizing equivalents. Sizes are unisex.

LACE-IN BOOT ZIPPER



79301

79300



- **Made in USA**
- Laces into your boots for quick entry and exit and consistent fit

STYLE #	SIZE
79300	8"
79301	6"

MODERN FIREFIGHTER LACE ZIPPER



90647

- Designed to ease the transition in and out of the Danner Modern Firefighter NMT boot
- Two boot zippers constructed with YKK zippers and 8 eyelets per side of zipper
- Sturdy leather tab provides ease of use

STYLE #	SIZE
90647	M [5-10.5], L [11-12], XL [13-15]

LACES



STYLE #	COLOR	EYES/LENGTH	USE
70016	Brown/Multi	18/63"	Universal
70017	Brown/Multi	14/54"	Universal
70032	Brown/Green/Blue	14/54"	Universal
70035	Orange	18/63"	Universal
70037	Gold	18/63"	Universal
70041	Red	18/63"	Universal
70045	Green	18/63"	Universal
70047	Blue	18/63"	Universal
70049	Royal Blue	18/63"	Universal
70052	Flat Red	18/63"	Universal

LACES HUNT - WORK - UNIFORM



STYLE #	COLOR	EYES/LENGTH	USE
70011	Black/Tan	26/84"	Hunt
70012	Coyote	26/86"	Uniform
70019	Gold/Tan	26/84"	Work
70020	Black	14/54"	Uniform
70021	Black	18/63"	Uniform
70024	Mojave Olive	20/72"	Uniform
70025	Gold/Tan	14/54"	Work
70026	Gold/Tan	18/63"	Work
70027	Gold/Tan	20/72"	Work
70028	Black	20/72"	Uniform
70029	Black	26/84"	Uniform
70030	Black/Tan	18/63"	Hunt
70031	Black/Tan	20/72"	Hunt

LACES LEATHER



STYLE #	COLOR	LENGTH	USE
70101	Brown	46"	Outdoor
70102	Brown	63"	Outdoor
70103	Burgundy	46"	Outdoor
70104	Burgundy	63"	Outdoor

NEW

SUEDE & LEATHER CLEANER



90661

- Formulated to clean all types of genuine smooth, textured, suede, and nubuck leather
- Foaming action allows for easy application with minimal spillage
- Can be used for home, office, boat, or RV needs
- 5 fluid ounces

STYLE #	PRODUCT	VOLUME
90661	Suede & Leather Cleaner	5oz

BOOT CARE SYSTEM



97002

97003

- Danner® Waterproofing Gel provides a breathable waterproof barrier for full-grain leather
- Danner® Waterproofing Spray blocks water from the outside while letting moisture escape from the inside, making it a great choice for suede or nubuck leather

STYLE #	PRODUCT	VOLUME
97002	Waterproofing Gel	4oz
97003	Waterproofing Spray	4oz

ODOR ELIMINATOR



99326

- Anti-bacterial. Discourages the build-up of odor by not allowing bacteria to grow and multiply
- PFC Free
- Safe to use on products with a waterproof membrane
- Scent Free
- Applicable on leather, nubuck, suede, or textile

STYLE #	VOLUME
99326	3.4oz

SUEDE & NUBUCK CONDITIONER



99329

- Nourishes and conditions suede and nubuck
- Provides a waterproof barrier on suede and nubuck
- Safe to use on products with a waterproof membrane
- PFC Free
- Scent Free

STYLE #	VOLUME
99329	3.4oz

DANNER CLEANING BRUSH



99327

- 3 in 1 Cleaning Brush
- Sturdy nylon bristles help remove dirt and debris
- Pointed leading edge is ideal for cleaning welts and outsoles
- Beveled trailing edge scrapes off mud and dirt.

DANNER SUEDE & NUBUCK BRUSH



99328

- 2 in 1 brush
- Specifically designed to care for suede and nubuck boots
- Nylon and brass bristles remove dirt while restoring the natural nap and texture of the suede or nubuck
- Rubber brush helps to remove stains

NEW

DANNER APPLICATION BRUSH



90665

- Ideal for applying Leather Cleaner, Boot Dressing, or Boot Wax
- Wooden back provides easy grip
- Pig bristles are stiff, strong, and durable and will not become overly saturated with liquid

BOOT WAX (7 OZ)



90645



- **Made in USA**
- Made with natural, vegetable-based oils and beeswax
- Provides a superior waterproof barrier on full-grain leather
- Conditions leather and lubricates stitching to reduce wear
- Liquefies on contact for easy application
- Sold in sets of 24. Master carton doubles as a POP display

STYLE #	VOLUME
90645	7oz

BOOT DRESSING (1.7 OZ)



97111



97112



97113

- Prevents drying and cracking
- Prevents scuffs and scratches
- May be used on all leather items, except nubuck or suede
- Sold in sets of 12

STYLE #	LEATHER COLOR	VOLUME
97111	Black	1.7oz
97112	Brown	1.7oz
97113	Clear	1.7oz

BOOT DRESSING (4 OZ)



97401



97501



97503

- Prevents drying and cracking
- Prevents scuffs and scratches
- May be used on all leather items, except nubuck or suede
- Sold in sets of 12

STYLE #	LEATHER COLOR	VOLUME
97401	Brown	4oz
97501	Black	4oz
97503	Clear	4oz

BOOT DRESSING (1.7 OZ)



97111

97112

97113

- Prevents drying and cracking
- Prevents scuffs and scratches
- May be used on all leather items, except nubuck or suede
- Sold in sets of 12

STYLE #	LEATHER COLOR	VOLUME
97111	Black	1.7oz
97112	Brown	1.7oz
97113	Clear	1.7oz

BOOT DRESSING (4 OZ)



97401

97501

97503

- Prevents drying and cracking
- Prevents scuffs and scratches
- May be used on all leather items, except nubuck or suede
- Sold in sets of 12

STYLE #	LEATHER COLOR	VOLUME
97401	Brown	4oz
97501	Black	4oz
97503	Clear	4oz

STICKERS



90609

- Durable vinyl stickers

STYLE #	SIZE
90609	3" x 3"

CLASSIC BEANIE



90631



- **Made in USA**
- 100% acrylic is quick-drying, warm and durable
- Adjustable cuff provides perfect fit
- 11" tall when uncuffed

STYLE #	COLOR
90631	Hunter Green

NEW DOUGLAS FIR BEANIE



90666



90667

- Richardson 136 XE Jacquard beanie features a 4 top-seam knit
- 100% Acrylic is lightweight, soft, and warm with a wool-like feel
- Debossed Leather Applique
- One Size Fits Most

STYLE #	COLOR
90666	Caramel
90667	Dark Forest

NEW EVERGREEN TRUCKER



90668



90669

- Richardson 112 Body
- Seamless front, 5 panel construction
- 47% Cotton, 53% Polyester
- Silicone Transfer Design
- Mid Profile Unstructured Crown
- One Size Fits Most

STYLE #	COLOR
90668	Blue Teal
90669	Quarry

NEW**HYDRO TRUCKER**

90670

- Richardson 935 Body
- Quick-drying fabric and breathable wide-set nylon mesh is ideal for aquatic adventures and hot-weather hikes
- Packable and floatable
- One Size Fits Most

STYLE #	COLOR
90670	Orange/Khaki

NEW**MOUNTAIN TRUCKER**

90671

- Richardson 168 Body
- 7-Panel trucker creates a seamless front panel
- Sublimated Danner Mountain Patch
- One Size Fits Most

STYLE #	COLOR
90671	Charcoal/Old Gold

NEW**FLYFISHER TRUCKER**

90672

- Richardson 112 Body
- Mid Profile Unstructured Crown
- One Size Fits Most

STYLE #	COLOR
90672	Black/Birch/Caramel

EMBROIDERED HAT



90658

- Uses a Richardson 112 profile
- Mid Profile Unstructured Crown
- Embroidered Logo
- Mesh back
- Adjustable snapback closure

STYLE #	COLOR
90658	Green

ROPE HAT



90659

90660

- Uses a Richardson 256 profile
- Adjustable snapback closure
- Cotton sweatband
- Embroidered Logo [90659]
- Woven Patch [90660]

STYLE #	COLOR
90659	Khaki
90660	Black

MOUNTAIN TRUCKER



90627

- Medium Profile Crown
- Woven Patch
- Mesh Back
- Snap Back Closure
- Sold in packs of 12

STYLE #	COLOR
90627	Loden

OREGON TRUCKER



90628

- Medium/Low Profile Crown
- Debossed Leather Applique Patch
- Mesh back
- Snap Back Closure
- Sold in packs of 12

STYLE #	COLOR
90628	Chocolate Chip/Grey Brown

EMBROIDERED HAT



90622

- Low Profile Unstructured Crown
- Embroidered Logo
- Mesh back
- Snap back closure
- Sold in packs of 12

STYLE #	COLOR
90622	Black/Charcoal

EMBROIDERED TRUCKER



90623

- Medium/Low Profile Crown
- Embroidered Logo
- Mesh back
- Snap back closure
- Sold in packs of 12

STYLE #	COLOR
90623	Charcoal/Black

BLAZE ORANGE TRUCKER



90626

- Medium Profile Crown
- Embroidered Patch
- Mesh back
- Snap back closure
- Sold in packs of 12

STYLE #	COLOR
90626	Blaze

SHOP TEE



90648

- 100% Cotton
- 2 Way Stretch
- Front Pocket
- Crewneck with short, raglan sleeves
- Classic Fit

STYLE #	COLOR	SIZE RUN
90648	Black	XS-2XL

LICENSE PLATE TEE



90649

- 100% Cotton
- 2 Way Stretch
- Crewneck with short, raglan sleeves
- Classic Fit

STYLE #	COLOR	SIZE RUN
90649	Heather Gray	XS-2XL

CASCADES TEE



90650

- 100% Cotton
- 2 Way Stretch
- Crewneck with short, raglan sleeves
- Classic Fit

STYLE #	COLOR	SIZE RUN
90650	Gray	XS-2XL

PAINTED HILLS TEE



90651

- 95% Polyester, 5% Spandex
- 4-Way Stretch
- Athletic Fit

STYLE #	COLOR	SIZE RUN
90651	Black	XS-2XL

HOODIE



90652

90653

- 80% Polyester, 20% Cotton
- Features a front kangaroo pocket and a drawstring hood
- Classic Fit

STYLE #	STYLE	COLOR	SIZE RUN
90649	Shop	Heather Gray	XS-2XL
90653	Evergreen	Hunter Green	XS-2XL

DANNER, INC.
17634 NE AIRPORT WAY
PORTLAND, OR 97230-4975

P: 800 345 0430
P: 503 251 1100
F: 503 251 1119
DANNER.COM



DANNER, INC.
NO. A3026
ISO 9001 CERTIFIED

AAFES QUALITY CERTIFICATION

Danner is the first and only footwear manufacturer to earn the Quality Assurance Supplier Certification from the Army & Air Force Exchange Service.

Danner®, Acadia®, Danner Bob®, TFX®, Airthotic®, Pronghorn® and TERRA FORCE® are registered trademarks of LaCrosse Footwear, Inc. TERRA FORCE® X (TFX), the TF logo and Striker® are trademarks of Danner, Inc. GORE-TEX®, GORE-TEX® XCR, GTX®, CROSSTECH®, Guaranteed to Keep You Dry and the Diamond logo are registered trademarks of W.L. Gore and Associates, Inc. Cordura® is a registered trademark of DuPont. Thinsulate™ is a trademark of 3M. Vibram® is a registered trademark of Vibram® S.P.A. of Italy.